

MAGAIN



2 Parken Court Noarlunga Downs SA

4 2 3

Please contact Jemma Turner from Magain Real Estate for all your property advice.

Welcome to 2 Parken Court, Noarlunga Downs - an expansive and beautifully appointed family home built by Hickinbotham in 2002. Situated on a generous 682sqm (approx.) block in a quiet, picturesque street, this property offers everything a family could desire: room to entertain, versatile spaces for work or play, and the added bonus of a massive shed. With superb access to essential amenities, this home embodies comfortable and convenient living in a highly sought-after location.

Upon entry, you are greeted by a grand master suite, perfectly designed for relaxation and privacy. This spacious

[For full version visit the website](https://www.magain.com.au/property/2-parken-court-noarlunga-downs-sa/8435123)

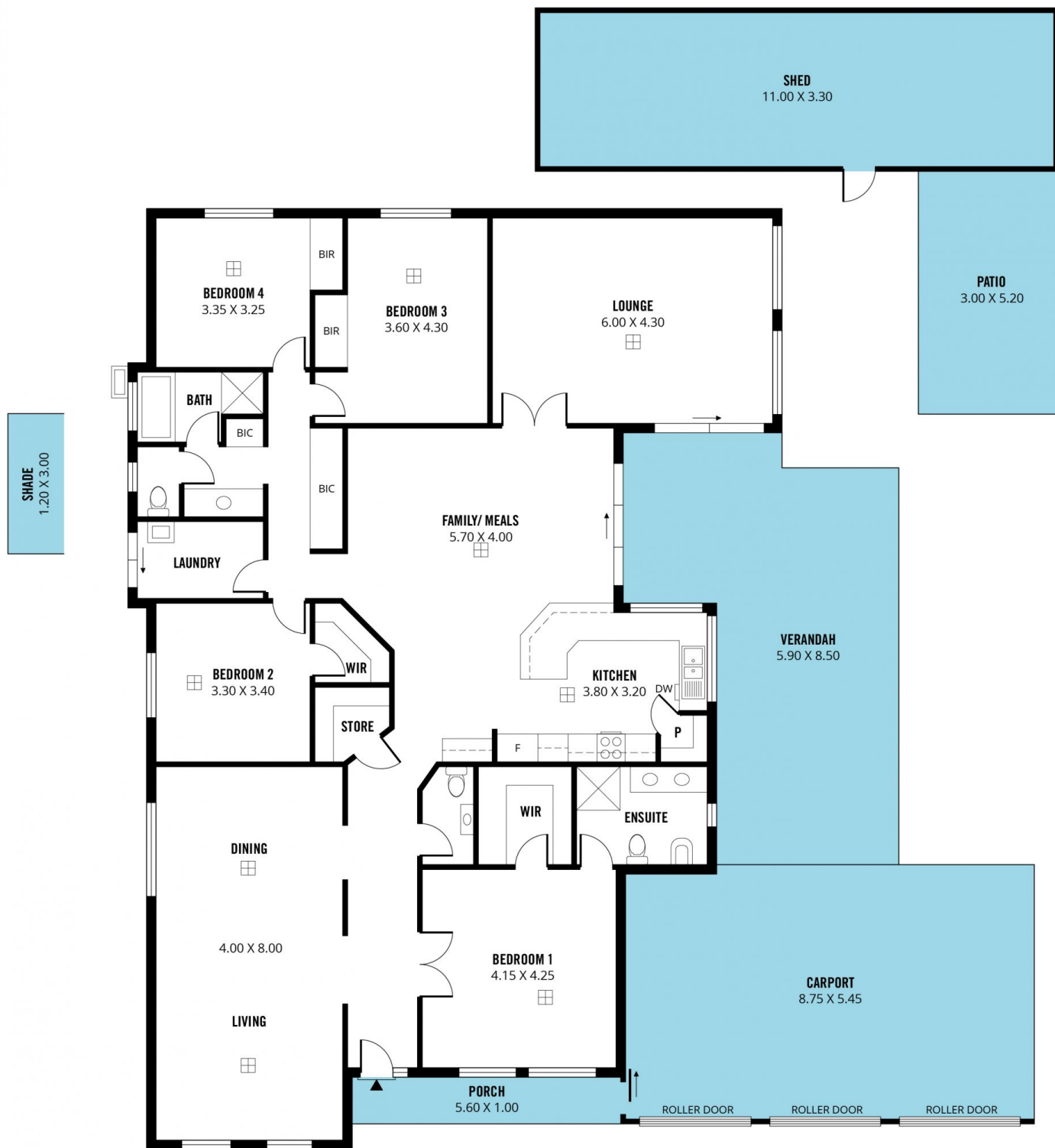
Type : House
Price : \$ 875,000
Building Size : 250 sqm
Land Size : 682 sqm
View : <https://www.magain.com.au/property/2-parken-court-noarlunga-downs-sa/8435123>



Jemma Turner
08 8366 2230

<https://www.magain.com.au>
Magain Real Estate

PO Box 18 Aldinga Beach SA
08 8366 2230



Scale in metres. This drawing is for illustration purposes only. All measurements are approximate and details intended to be relied upon should be independently verified.

Produced by The Fotobase Group