

MAGAIN



1/110 Lovelock Drive Noarlunga Downs SA

3 2 1

Please contact Jemma Turner or Jacqui Wehrmann from Magain Real Estate for all your property advice.

Welcome to 1/110 Lovelock Drive, Noarlunga Downs - a fresh, modern townhouse offering the perfect blend of style, comfort, and convenience. Built in 2019, this home exudes sophistication with its thoughtfully designed floorplan, high-quality finishes, and an abundance of natural light.

Step inside and be greeted by a spacious, open-plan living, dining, and kitchen area on the ground floor. This inviting space is ideal for both relaxation and entertaining, with seamless indoor-outdoor flow. The kitchen is every cook's dream, boasting sleek finishes, a practical breakfast bar, plenty of cupboard and bench space, a gas cooktop,

[For full version visit the website](https://www.magain.com.au/property/11-10-lovelock-drive-noarlunga-downs-sa/8435171)

Type : Townhouse
Price : \$ 659,000
Building Size : 135 sqm
Land Size : 155 sqm
View : <https://www.magain.com.au/property/11-10-lovelock-drive-noarlunga-downs-sa/8435171>



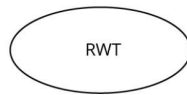
Jemma Turner
08 8366 2230



Jacqui Wehrmann
08 8366 2230

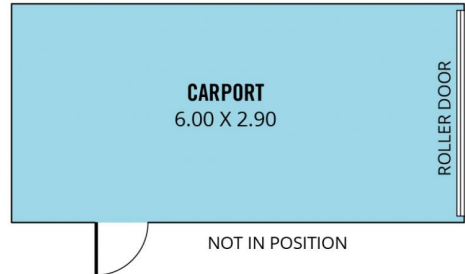
<https://www.magain.com.au>
Magain Real Estate

PO Box 18 Aldinga Beach SA
08 8366 2230

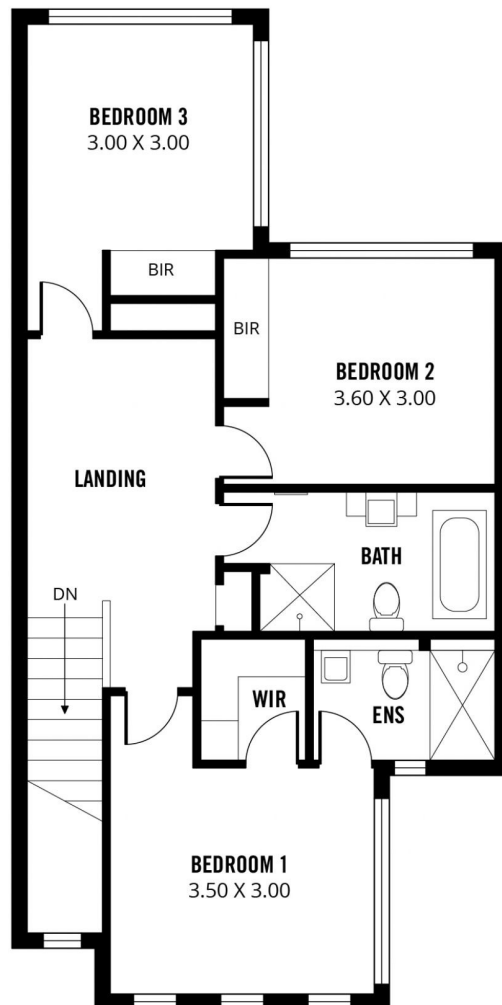


NOT IN POSITION

SHED
1.80 X 0.70



GROUND FLOOR



UPPER FLOOR

