

MAGAIN



42 Jordan Drive Morphett Vale SA

3 1 1

Please contact Jemma Turner or Jacqui Wehrmann from Magain Real Estate for all your property advice.

This charming home at 42 Jordan Drive, Morphett Vale, is set on a generous 776sqm corner allotment and offers a well-designed layout, perfectly suited for comfortable family living. Boasting three well-sized bedrooms, a spacious open-plan living and dining area, and an array of outdoor features, this property is an excellent choice for those seeking both functionality and lifestyle.

Zoned Housing Diversity Neighbourhood - HDN, this property would also make for a savvy investment/development purchase.

[For full version visit the website](https://www.magain.com.au/property/42-jordan-drive-morphett-vale-sa/8435173)

Type : House
Price : \$ 721,000
Building Size : 117 sqm
Land Size : 776 sqm
View : <https://www.magain.com.au/property/42-jordan-drive-morphett-vale-sa/8435173>



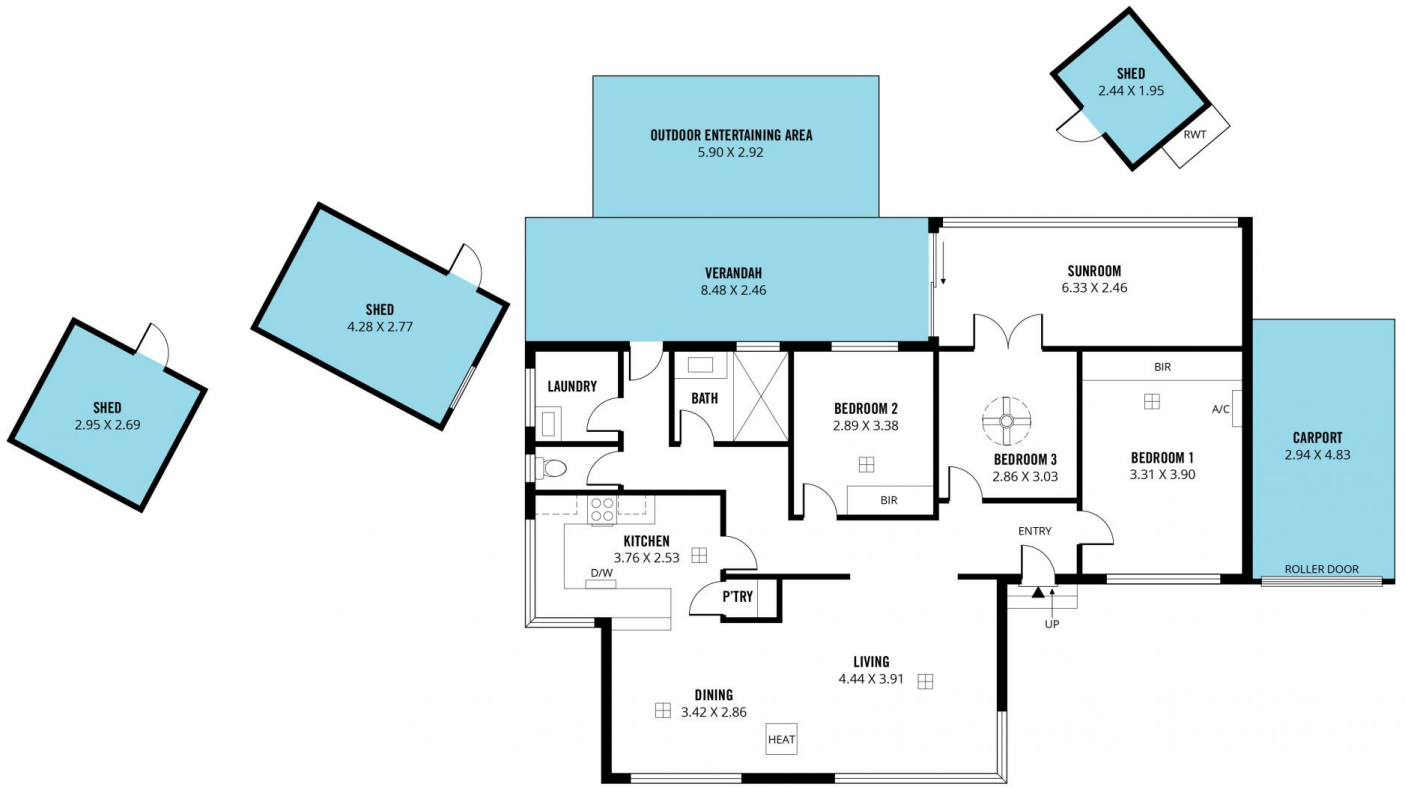
Jemma Turner
08 8366 2230



Jacqui Wehrmann
08 8366 2230

<https://www.magain.com.au>
Magain Real Estate

PO Box 18 Aldinga Beach SA
08 8366 2230



Scale in metres. This drawing is for illustration purposes only. All measurements are approximate and details intended to be relied upon should be independently verified.

Produced by **The Fotobase Group**