

MAGAIN



16 Township Lane Aldinga SA

4 2 2

Please contact Jemma Turner or Jacqui Wehrmann from Magain Real Estate for all your property advice.

It's rare to find a property of this quality in such a unique and peaceful location. Set on a generous 1,000sqm approx. allotment with rural views, this stunning home is perfectly positioned in the thriving Aldinga Township. Just moments away, you'll find an array of boutique shopping options and exceptional dining experiences, including The Little Rickshaw, Rustic Thai, the newly renovated Aldinga Hotel, and the popular Kick Back Brewery, among others. With stunning beaches and scenic walking trails only minutes away from your doorstep, this location offers the perfect blend of lifestyle and convenience-an opportunity truly worth considering.

[For full version visit the website](https://www.magain.com.au/property/16-township-lane-aldinga-sa/8435193)

Type : House
Price : \$ 1,165,000
Building Size : 230 sqm
Land Size : 1000 sqm
View : <https://www.magain.com.au/property/16-township-lane-aldinga-sa/8435193>



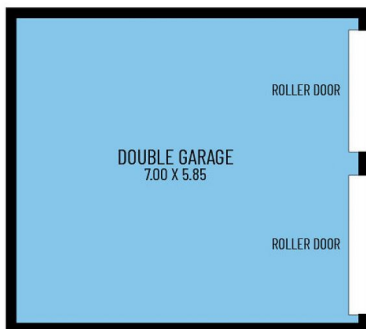
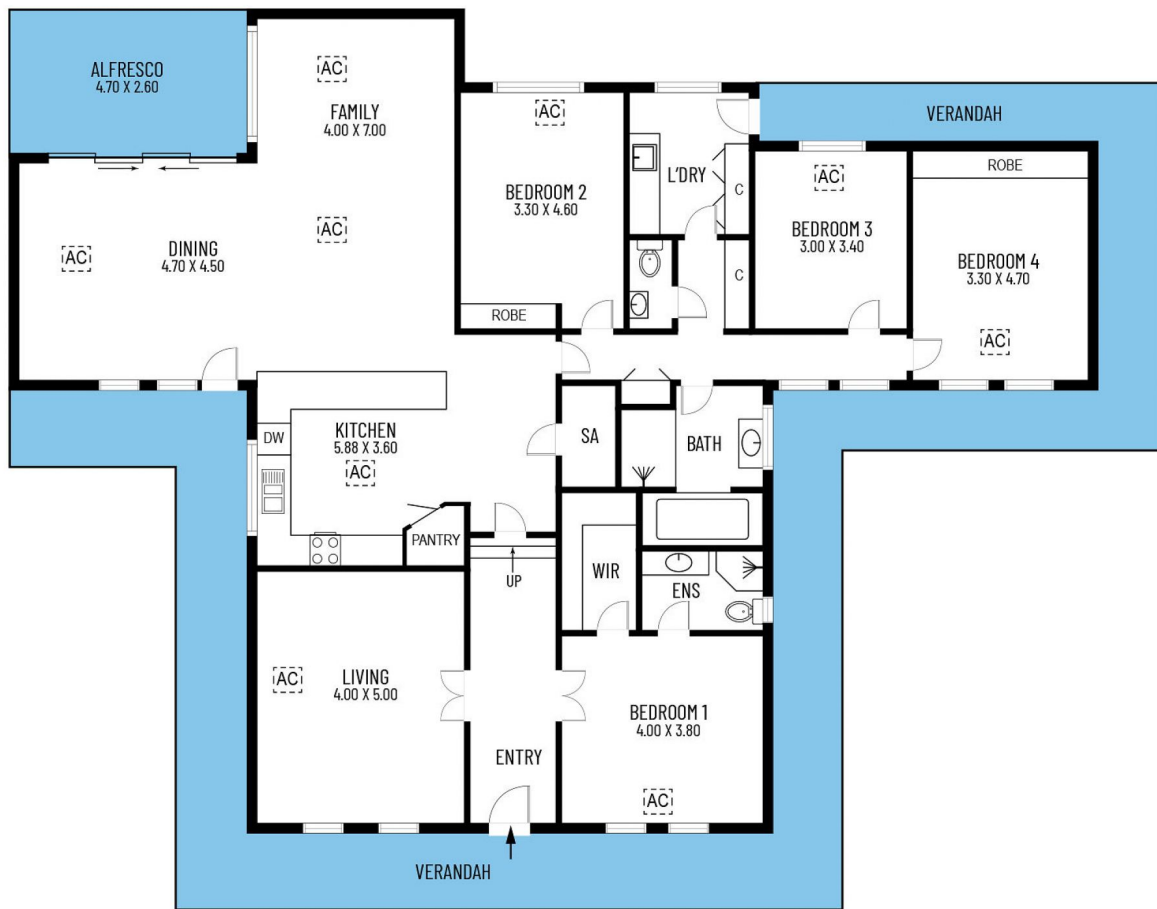
Jemma Turner
08 8366 2230



Jacqui Wehrmann
08 8366 2230

<https://www.magain.com.au>
Magain Real Estate

PO Box 18 Aldinga Beach SA
08 8366 2230



Every precaution has been taken to verify the accuracy of the above details. However all dimensions are approximate and no liability be accepted. Interested parties should make and rely on their own inquiries. Floor plan by Sabine Verhack Photography

**16 Township Lane,
Aldinga**