


# MAGAIN



## 105 Hampstead Road MANNINGHAM SA

10 

Adaptable building offering potential for a multitude of uses (subject to necessary consents). Future growth opportunity available with approved plans for a further two upper levels and extra car parking provisions.

Situated on approx 740sqm allotment close to the recently upgraded Hampstead, Muller and Regency Roads, approximately 7 kms from the Adelaide CBD and a gateway to the emerging northern suburbs.

Averaging passing traffic of approximately 30,000 vehicles daily.

Currently offering sensational reception area plus 6 offices, staff room, kitchen, store room, wc facilities, air

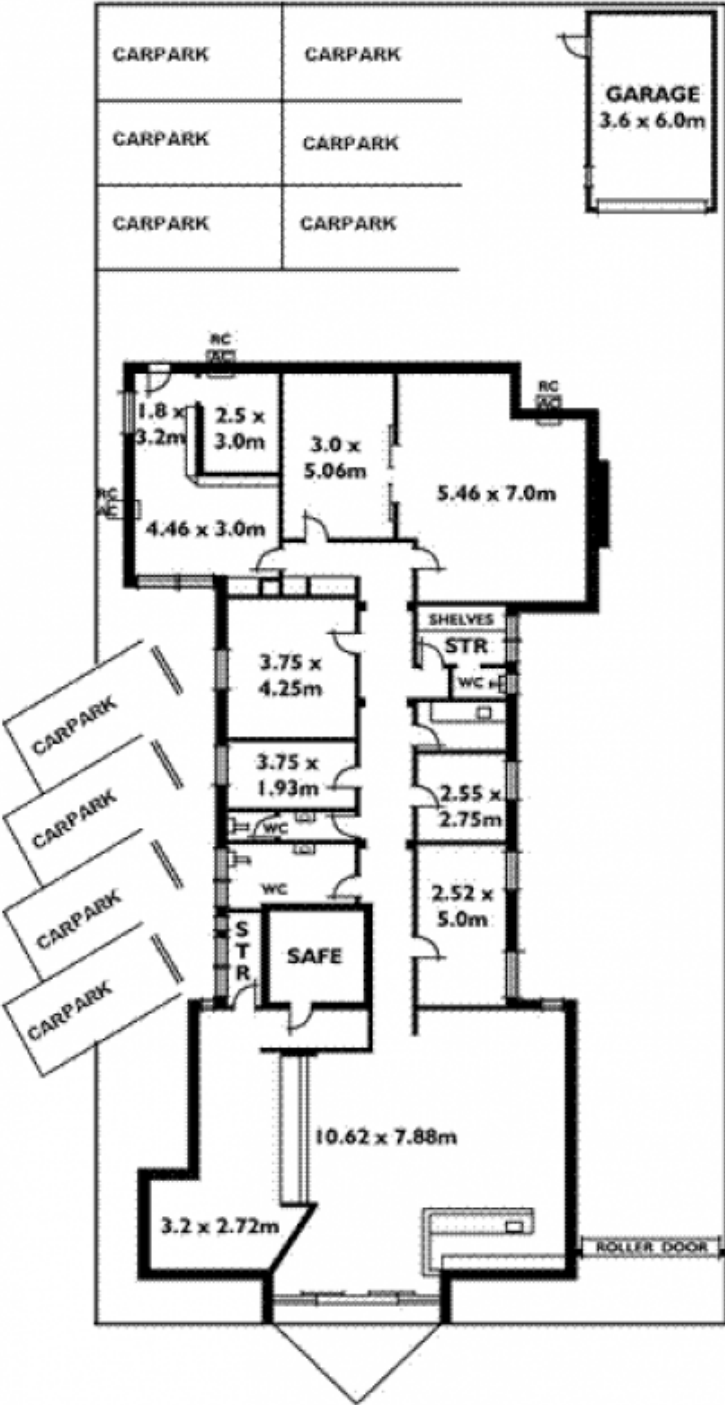
<b>Type</b>	: Offices
<b>Building Size</b>	: 328 sqm
<b>Land Size</b>	: 740 sqm
<b>View</b>	: <a href="https://www.magain.com.au/property/105-hampstead-road-manningham-sa/8435231">https://www.magain.com.au/property/105-hampstead-road-manningham-sa/8435231</a>

[For full version visit the website](https://www.magain.com.au)

<https://www.magain.com.au>  
Magain Real Estate

457 Greenhill Road Tusmore SA  
08 8332 1022

105 Hampstead Road, Manningham



**EXISTING/GROUND LEVEL PLAN  
WITH PROPOSED CARPARK DEVELOPMENT**

Disclaimer: The information within is not represented to be accurate, complete, or suitable for any purpose and shall not be used for the purpose of establishing any agreement or contract from the Vendor or the Agent. No responsibility may be claimed or accepted for any reliance placed by any persons in the use of this information. It is a condition of acceptance that the recipients