

# MAGAIN



## 13 Meredith Street NEWTON SA

Dont miss this fantastic opportunity to secure an outstanding site to accommodate your own business or as an investment perfect for your future nest egg. This property offers large shedding with add on potential all located approximately 10kms from Adelaides CBD.

<b>Type</b>	: Industrial
<b>Building Size</b>	: 600 sqm
<b>Land Size</b>	: 2147 sqm
<b>View</b>	: <a href="https://www.magain.com.au/property/13-meredith-street-newton-sa/8435233">https://www.magain.com.au/property/13-meredith-street-newton-sa/8435233</a>

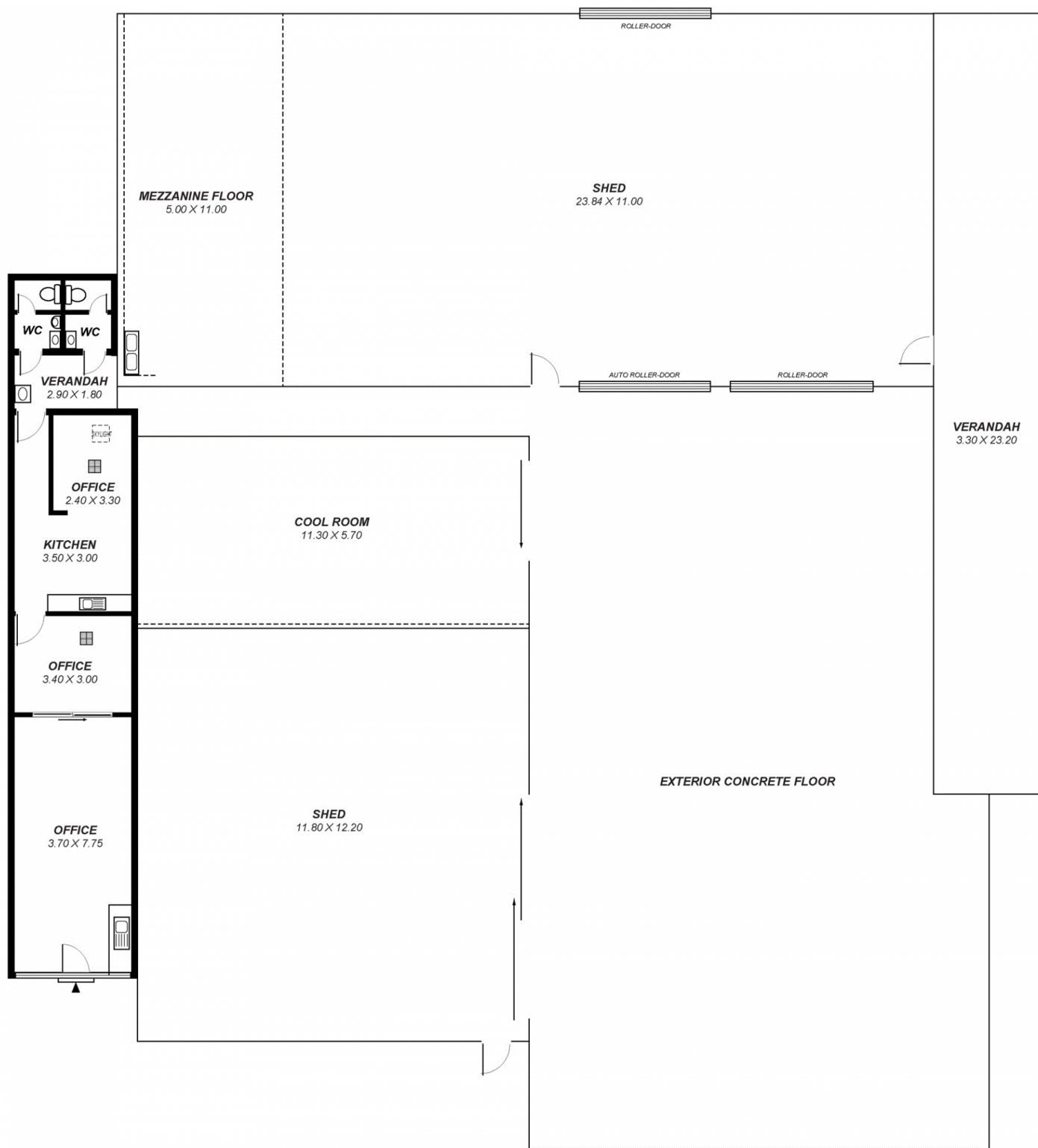
The property is zoned Urban Employment by the City of Campbelltown Council and offers the following features:

- Over 600sqm approximately of improvements
- 3.65m high automatic roller doors to the rear shed
- Near completed mezzanine of approximately 55sqm

[For full version visit the website](https://www.magain.com.au)

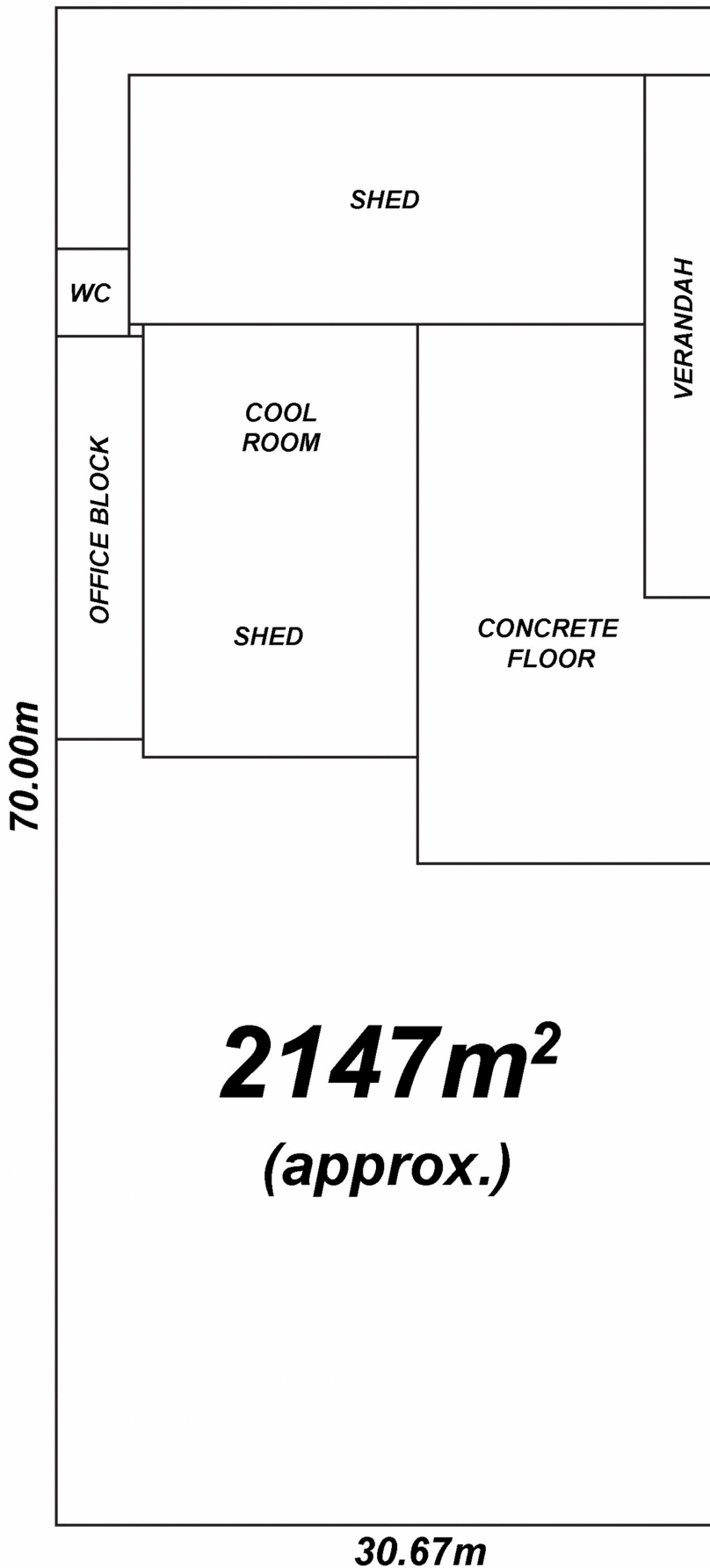
<https://www.magain.com.au>  
Magain Real Estate

457 Greenhill Road Tusmore SA  
08 8332 1022



This drawing is for illustration purposes only .  
All measurements are approximate and details intended  
to be relied upon should be independently verified.

Area	m <sup>2</sup>
Living:	68.21
Cool Room:	64.41
Verandah:	81.78
Mezzanine:	55.00
Shed:	406.20
<b>Total:</b>	<b>675.60</b>



**13 MEREDITH ST NEWTON**

*This drawing is for illustration purposes only .  
All measurements are approximate and details intended  
to be relied upon should be independently verified.*