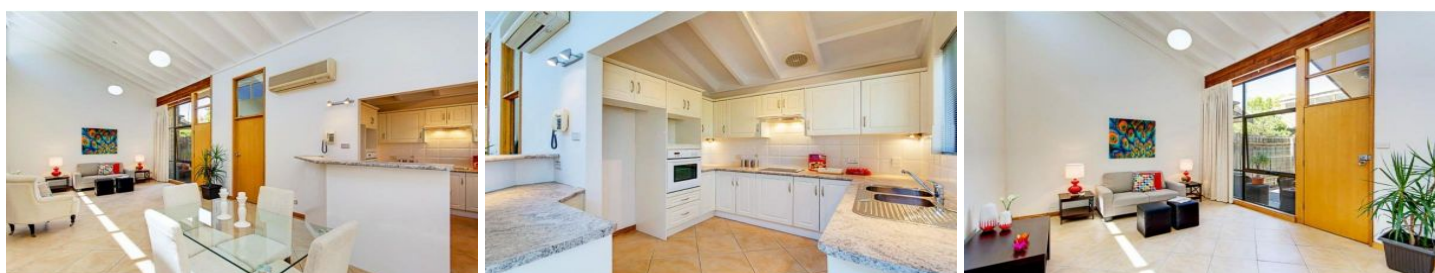


# MAGAIN



1/216 Payneham Road EVANDALE SA

2 1 1

Contemporary style homette offering generous accommodation and modern facilities including 2 bedrooms with built-in robes and ceiling fans, spacious open plan living and dining adjacent the tastefully updated kitchen with dishwasher, reverse cycle split system air conditioning, upgraded, fully tiled bathroom, large separate renovated laundry with built in storage, private fully enclosed courtyard and carport.

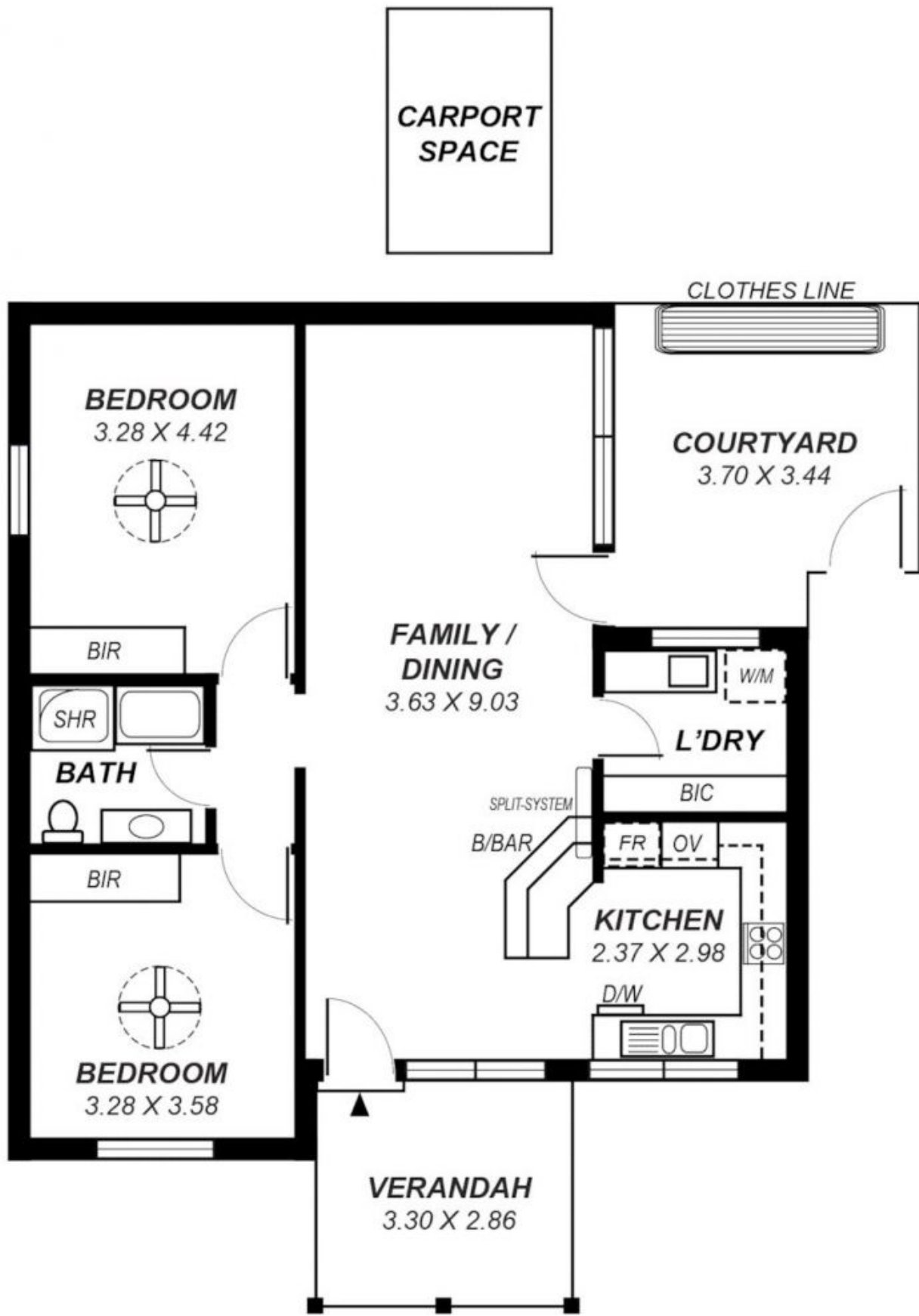
**Type** : Unit

**View** : <https://www.magain.com.au/property/1216-payneham-road-evandale-sa/8435247>

Superbly positioned in an appealing group close to outstanding local shopping, cafes and a short trip from the city this immaculate property will be perfect for first home buyers and investors.

For further information or an inspection please contact Matt

[For full version visit the website](#)



*This drawing is for illustration purposes only .  
 All measurements are approximate and details intended  
 to be relied upon should be independently verified.*