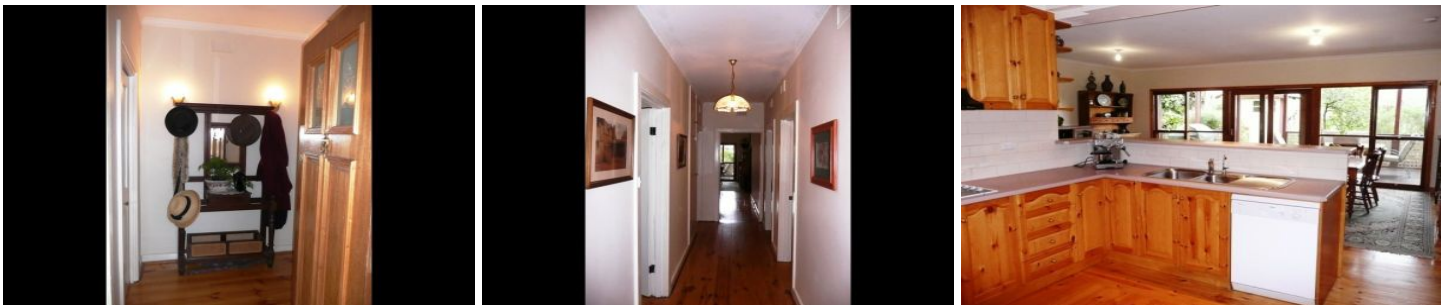


MAGAIN



571 Glynburn Road HAZELWOOD PARK SA

4 **1** **2**

Situated in the heart of the leafy eastern suburbs and representing a sensational lifestyle opportunity, this well presented and maintained home offers spacious family living and excellent entertaining all on a generous allotment.

Type : House

View : <https://www.magain.com.au/property/571-glynburn-road-hazelwood-park-sa/8435253>

With a host of features including:

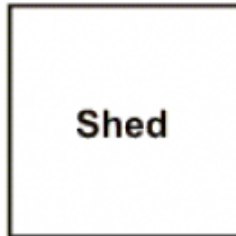
- 4 bedrooms plus private study
- Master bedroom with dressing room and private study
- Large formal lounge with open fireplace
- Light filled open plan casual living with timber kitchen, family/meals area overlooking the landscaped rear gardens
- Updated kitchen with pantry
- Renovated bathroom with floor to ceiling tiles

[For full version visit the website](https://www.magain.com.au/property/571-glynburn-road-hazelwood-park-sa/8435253)

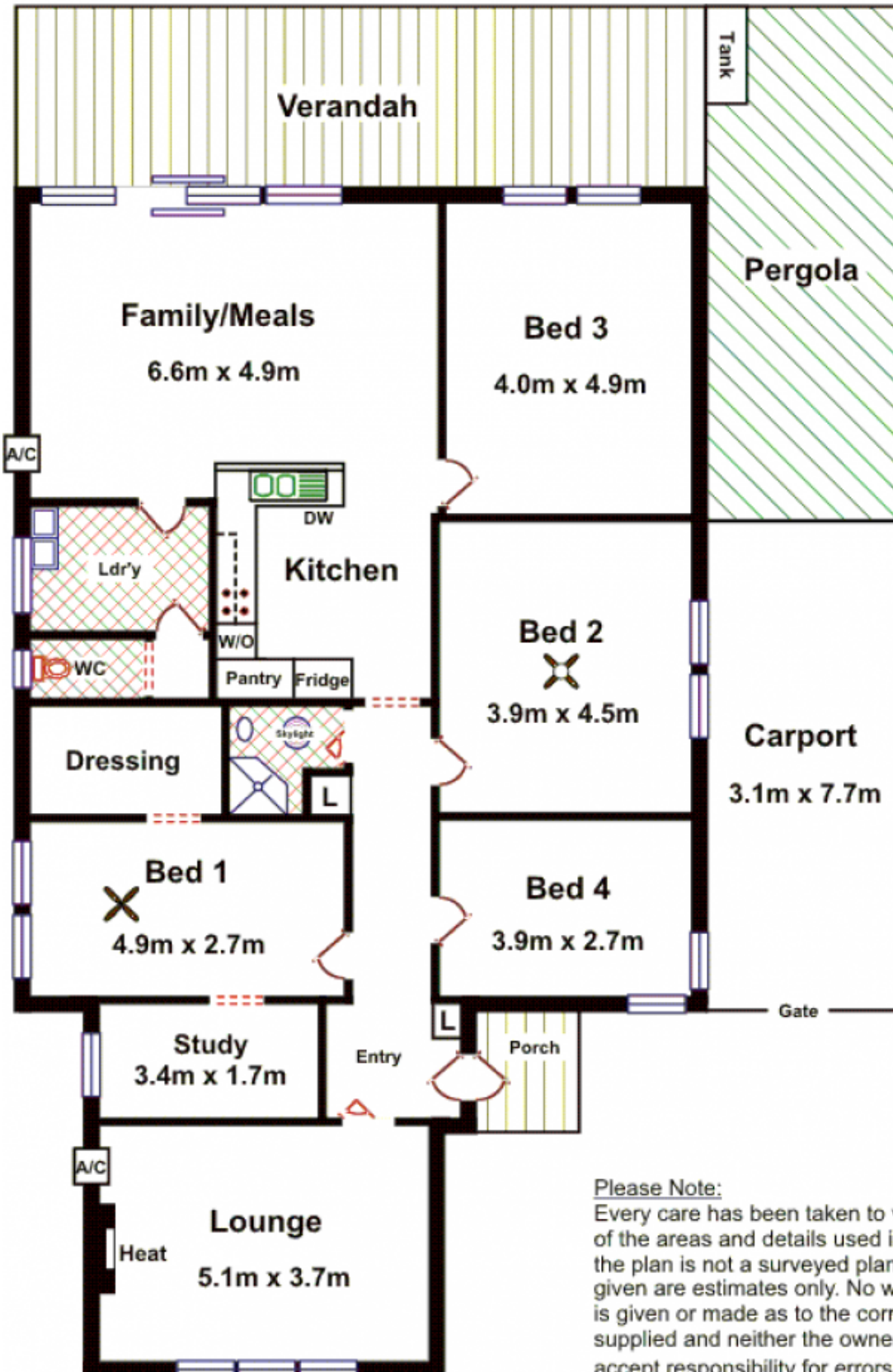
<https://www.magain.com.au>
Magain Real Estate

457 Greenhill Road Tusmore SA
08 8332 1022

571 Glynburn Road HAZELWOOD PARK



Area	M ²
Living	175.63
Carport	23.82
Verandah	31.17
Porch	3.08
Total	233.70



Please Note:

Every care has been taken to verify the correctness of the areas and details used in this leaflet. However, the plan is not a surveyed plan and the dimensions given are estimates only. No warranty or representation is given or made as to the correctness of the information supplied and neither the owners nor the Agents can accept responsibility for errors or omissions.