

MAGAIN



16/2 Ayliffes Road ST MARYS SA

1  1  1 

Good sized 1 bedroom unit in secure upstairs position, spacious living room, built in robes, private balcony and off street parking.

Close to Flinders University and Shepherds Hill Recreation Park.

Securely leased until Oct 2009. Currently leased at \$165.00per week.

To inspect by appointment, please call Matt Scarce on 8332 1022 or 0411 185 205.

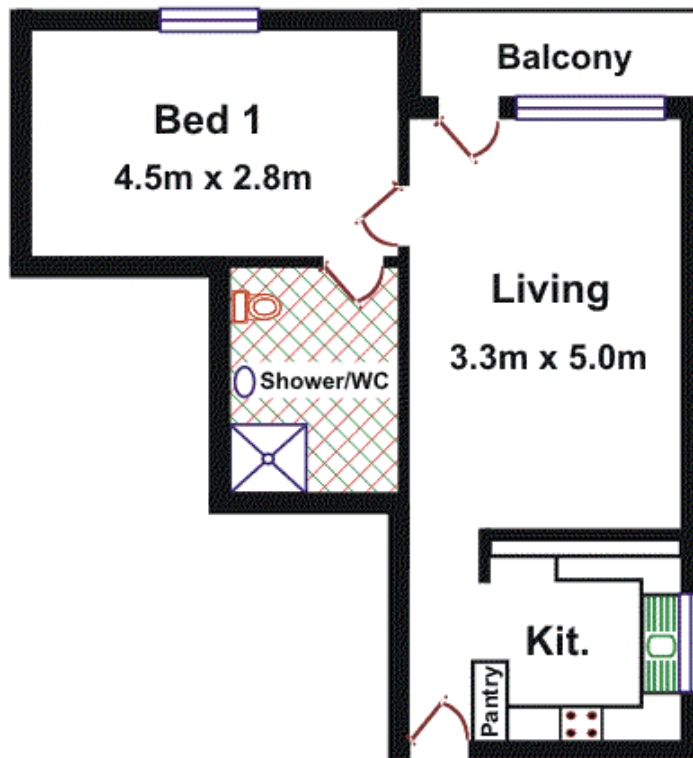
RLA1576

Type : Unit

View : <https://www.magain.com.au/property/162-ayliffes-road-st-marys-sa/8435272>

Unit 16, 2 Ayliffes Road SAINT MARY'S

Area	M ²
Living	51.92
Balcony	3.61
Total	55.53



Please Note: Every care has been taken to verify the correctness of the areas and details used in this leaflet. However, the plan is not a surveyed plan and the dimensions given are estimates only. No warranty or representation is given or made as to the correctness of the information supplied and neither the owners nor the Agents can accept responsibility for errors or omissions.