

MAGAIN



3 Bridget Street ATHELSTONE SA

4 2 3

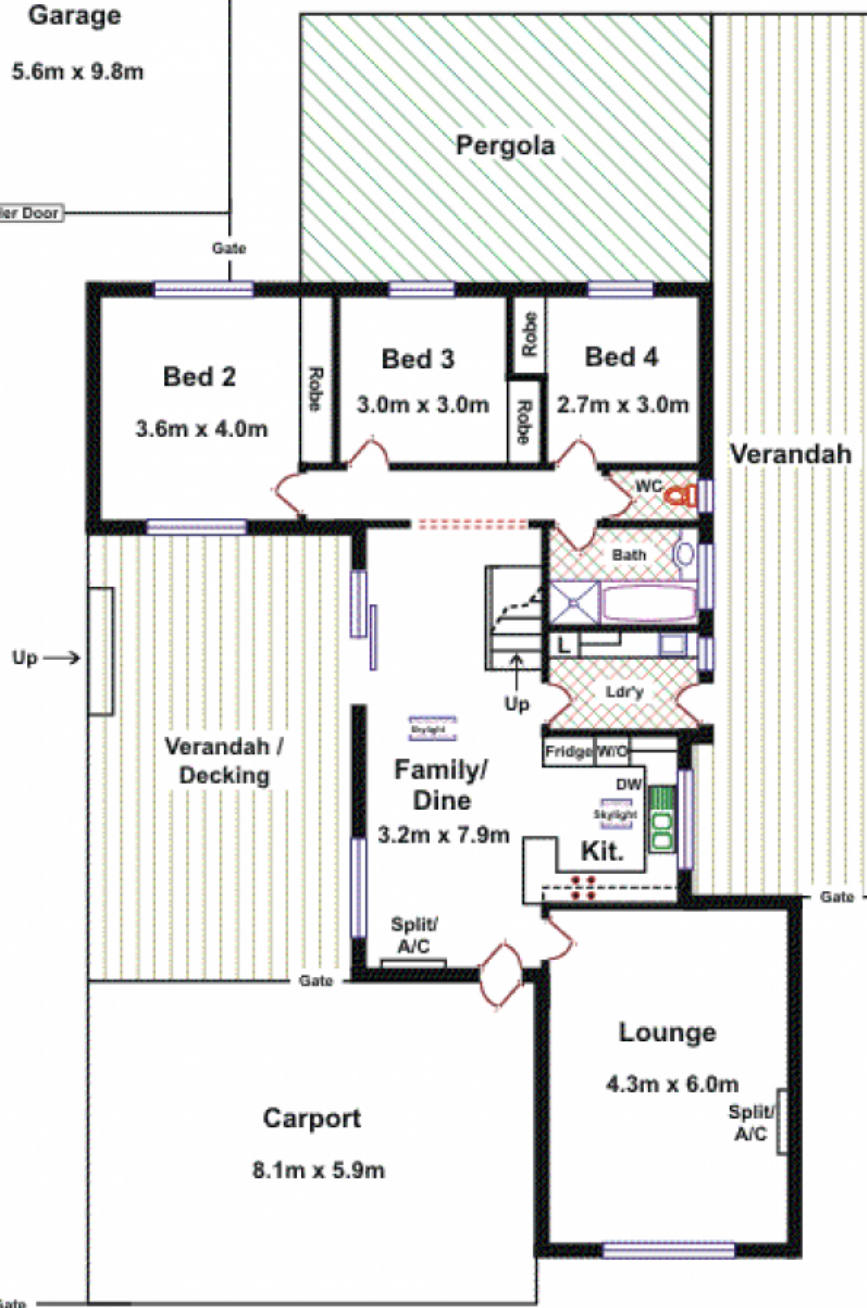
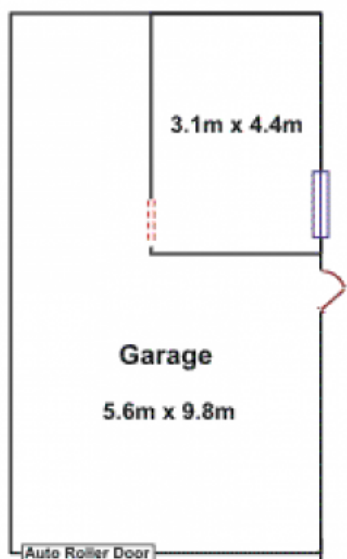
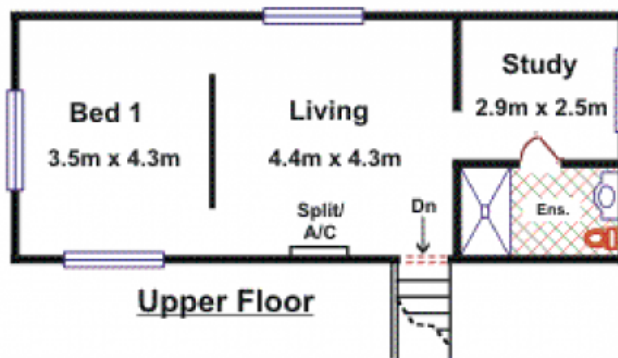
Located only a short stroll from Linear Park this superbly presented property comprises 4 bedrooms including a large parents retreat with sitting room, study and stunning new ensuite, generous formal living room with attractive polished floor boards, open plan family room adjacent a top class kitchen with granite bench tops and stainless steel appliances, reverse cycle split system air conditioning, brand new main bathroom, separate upgraded laundry with built-ins & outside access, double carport, lock up garage and plenty of extra parking as well as beautiful landscaped gardens and outdoor entertaining areas.

Type : House

View : <https://www.magain.com.au/property/3-bridget-street-athelstone-sa/8435292>

Area	M ²
Lower Floor	106.06
Upper Floor	50.53
Verandah	86.98
Carport	47.50
Total	291.07

3 Bridget Street ATHELSTONE



Please Note: Every care has been taken to verify the correctness of the areas and details used in this leaflet. However, the plan is not a surveyed plan and the dimensions given are estimates only. No warranty or representation is given or made as to the correctness of the information supplied and neither the owners nor the Agents can accept responsibility for errors or omissions.