

# MAGAIN



## 25 Elizabeth Street TEA TREE GULLY SA

4 2 3

For Sale by Expressions of Interest closing Monday 12 October 2009 at 1:00pm (unless sold beforehand).

A unique opportunity to acquire one of the early local homesteads dating back to approximately 1855 and situated on a large allotment of almost 1280sqm.

Steeped in local history the land was originally purchased by John Hector, founder of The Savings Bank of SA and formed part of a 78 acre estate. Numerous trees, especially fig trees, and vineyards were planted over the years. The land was slowly divided up by subsequent owners to its present allotment.

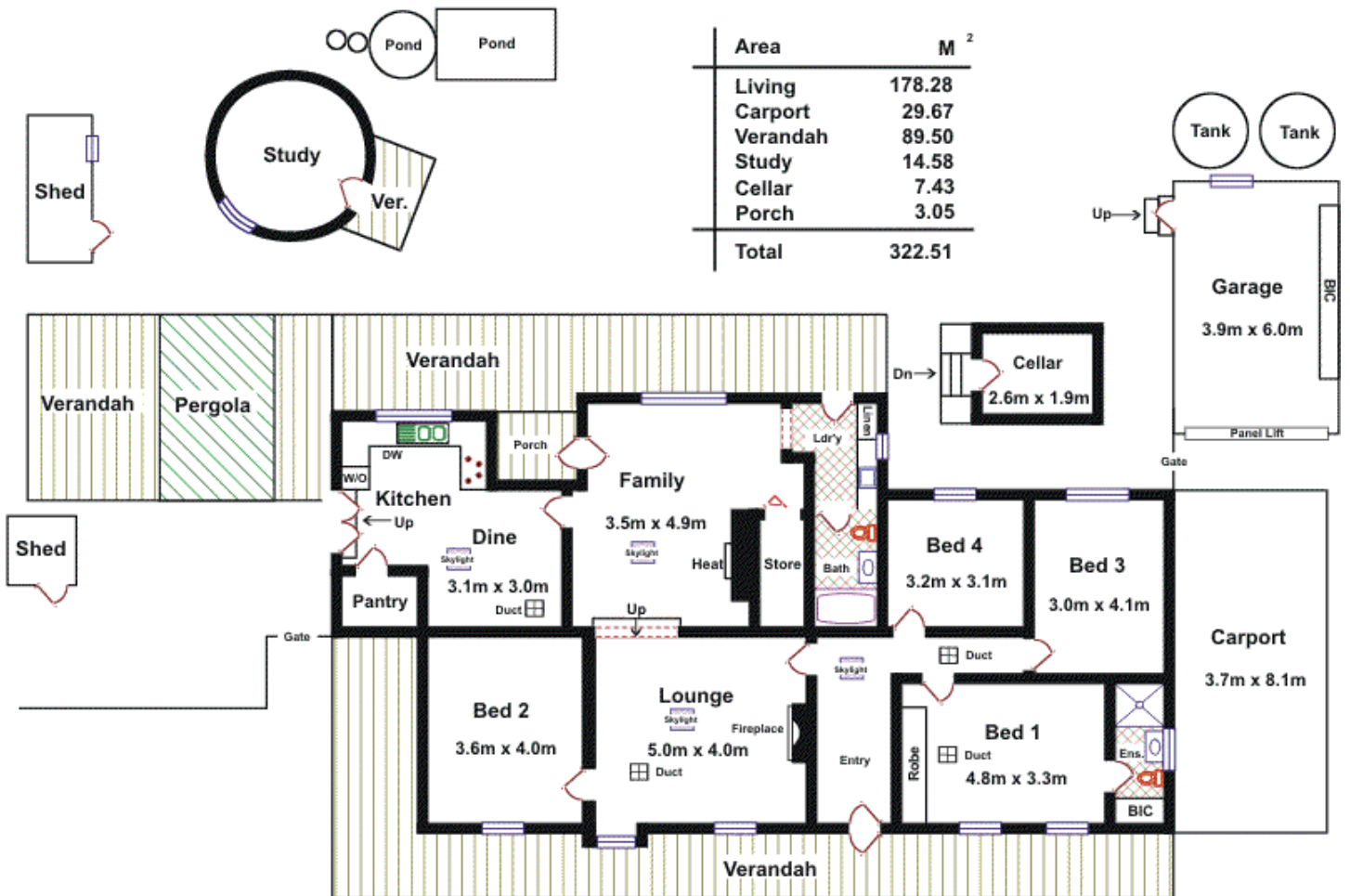
The house has been extended and restored over time with

[For full version visit the website](https://www.magain.com.au/property/25-elizabeth-street-tea-tree-gully-sa/8435317)

**Type** : House

**View** : <https://www.magain.com.au/property/25-elizabeth-street-tea-tree-gully-sa/8435317>

**25 Elizabeth Street**  
**TEA TREE GULLY**



**Please Note:** Every care has been taken to verify the correctness of the areas and details used in this leaflet. However, the plan is not a surveyed plan and the dimensions given are estimates only. No warranty or representation is given or made as to the correctness of the information supplied and neither the owners nor the Agents can accept responsibility for errors or omissions.