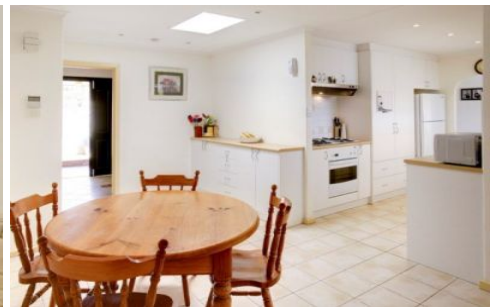




# MAGAIN



3 Clark Street WATTLE PARK SA

4  2  2 

This outstanding family home offers generous living for your growing family. Superbly located in this exceptional eastern foothills location and providing a quiet peaceful lifestyle yet only minutes from the Adelaide CBD.

**Type** : House

**View** : <https://www.magain.com.au/property/3-clark-street-wattle-park-sa/8435336>

Offering spacious accommodation with 4 bedrooms plus study or 5th bedroom, both formal and casual family living areas along with a fabulous covered outdoor entertaining and in-ground pool.

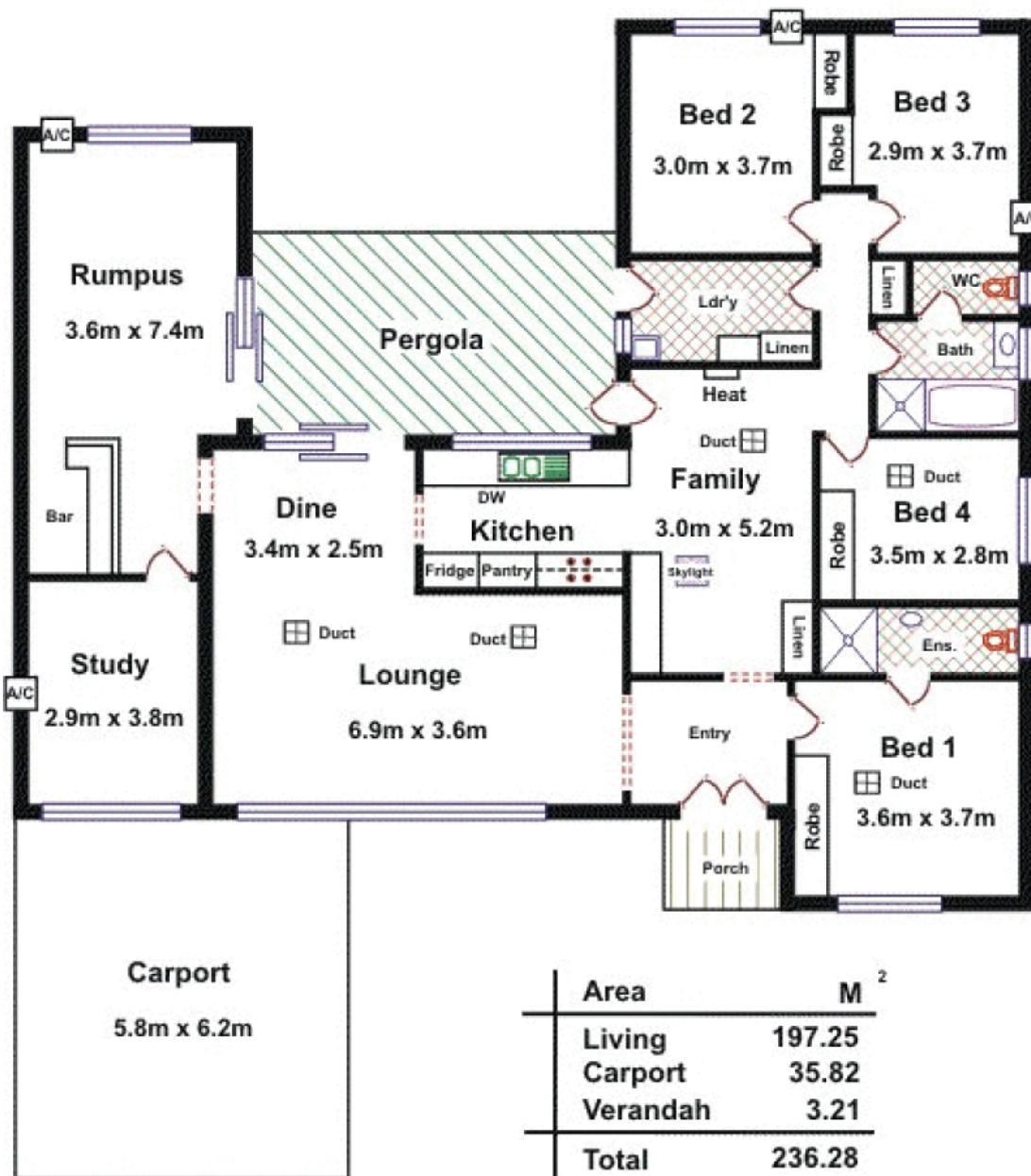
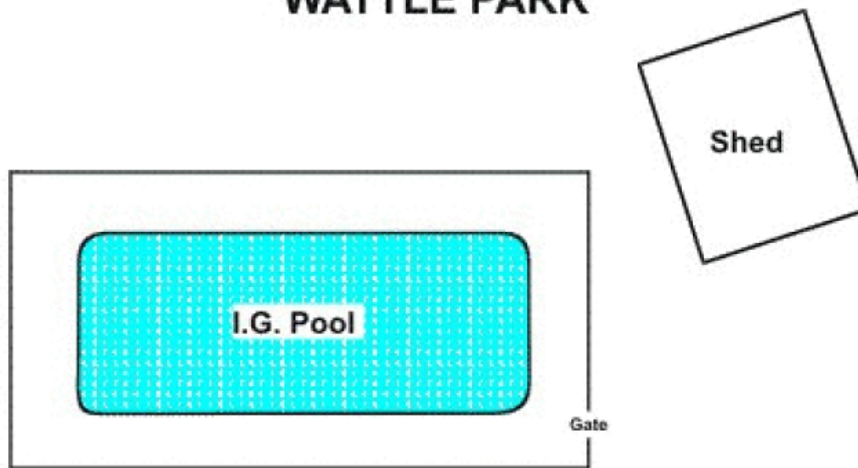
The homes many features include:  
4 bedrooms all with built-in-robos  
Master bedroom also with private ensuite  
Large study or possible 5th bedroom  
Formal Lounge and Dining

[For full version visit the website](#)

<https://www.magain.com.au>  
Magain Real Estate

457 Greenhill Road Tusmore SA  
08 8332 1022

# 3 Clark Street WATTLE PARK



Area	M <sup>2</sup>
Living	197.25
Carport	35.82
Verandah	3.21
<b>Total</b>	<b>236.28</b>

**Please Note:** Every care has been taken to verify the correctness of the areas and details used in this leaflet. However, the plan is not a surveyed plan and the dimensions given are estimates only. No warranty or representation is given or made as to the correctness of the information supplied and neither the owners nor the Agents can accept responsibility for errors or omissions.