

MAGAIN



10 Zephyr Grove SEMAPHORE PARK SA

3  1  2 

Spacious family home well presented comprising 3 double bedrooms, all with built-ins, living room with gas heating leading to family/meals and large kitchen with stainless steel appliances, ducted reverse cycle air conditioning, rumpus/ entertaining room with split system air conditioning, patio with spa and good size double garage with auto door and inside access. Superbly located just moments from the beach.

Type : House

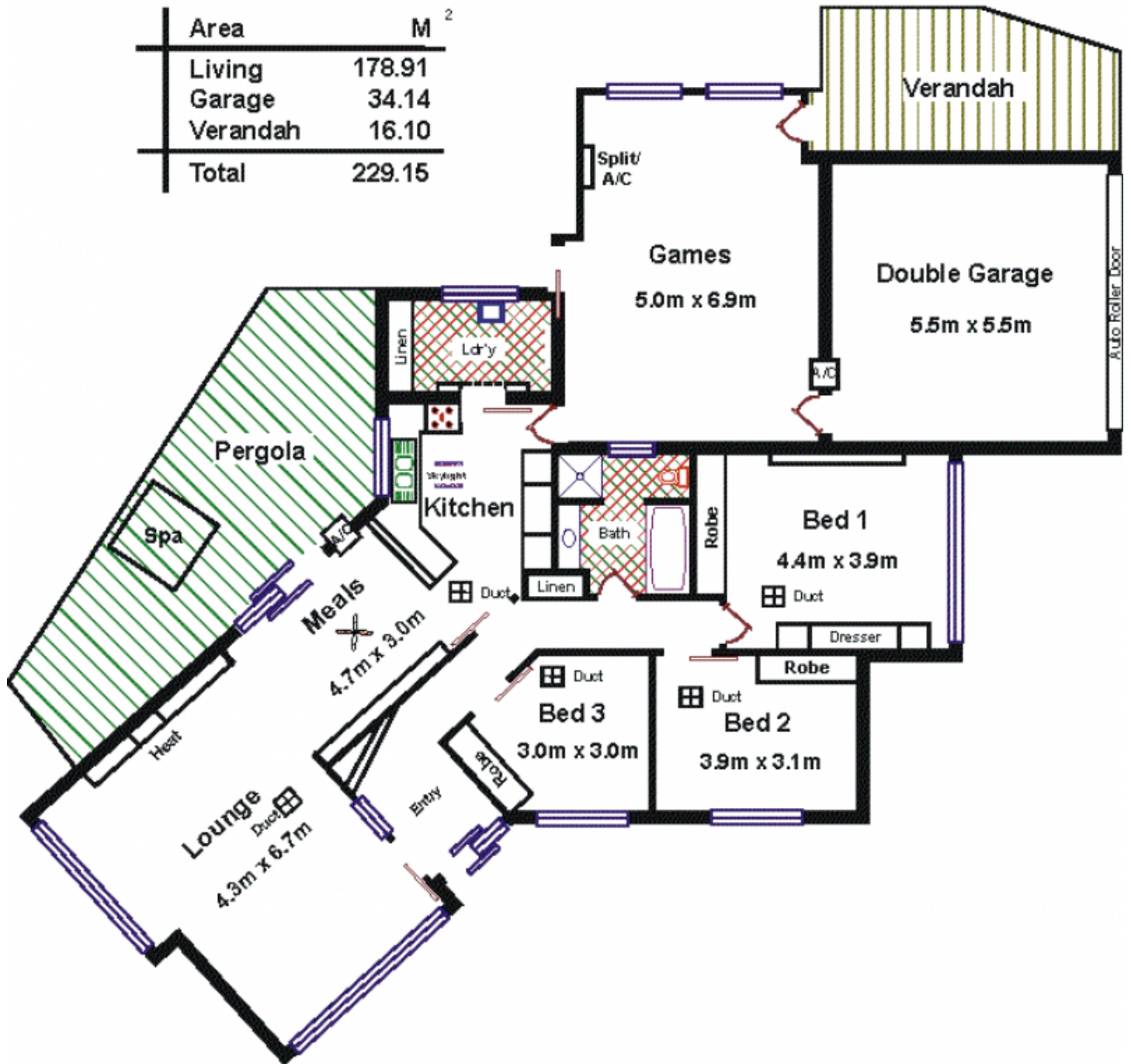
View : <https://www.magain.com.au/property/10-zephyr-grove-semaphore-park-sa/8435345>

Contact Matt Scarce 0411 185 205 for more information.

10 Zephyr Grove SEMAPHORE PARK



Area	M ²
Living	178.91
Garage	34.14
Verandah	16.10
Total	229.15



Please Note: Every care has been taken to verify the correctness of the areas and details used in this leaflet. However, the plan is not a surveyed plan and the dimensions given are estimates only. No warranty or representation is given or made as to the correctness of the information supplied and neither the owners nor the Agents can accept responsibility for errors or omissions.