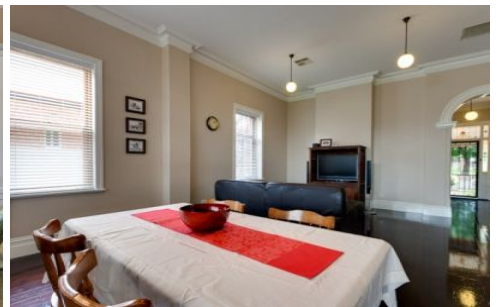


MAGAIN



10 Thomas Street NAILSWORTH SA

3 1 2

Superbly located on a generous allotment of approximately 882 square metres this charming character home has lots to offer. Comprising 3 genuine double bedrooms, built in robes, attractive floorboards throughout, spacious open plan living & dining adjacent gourmet kitchen with Caesar bench tops and stainless steel Miele appliances, the kitchen also boasts a large island breakfast bar and a wonderful outlook over the garden through beautiful leadlight windows.

Other features inside include ducted reverse cycle air conditioning, stunning brand new bathroom, 2nd w.c and recently upgraded laundry with loads of cupboards and bench space.

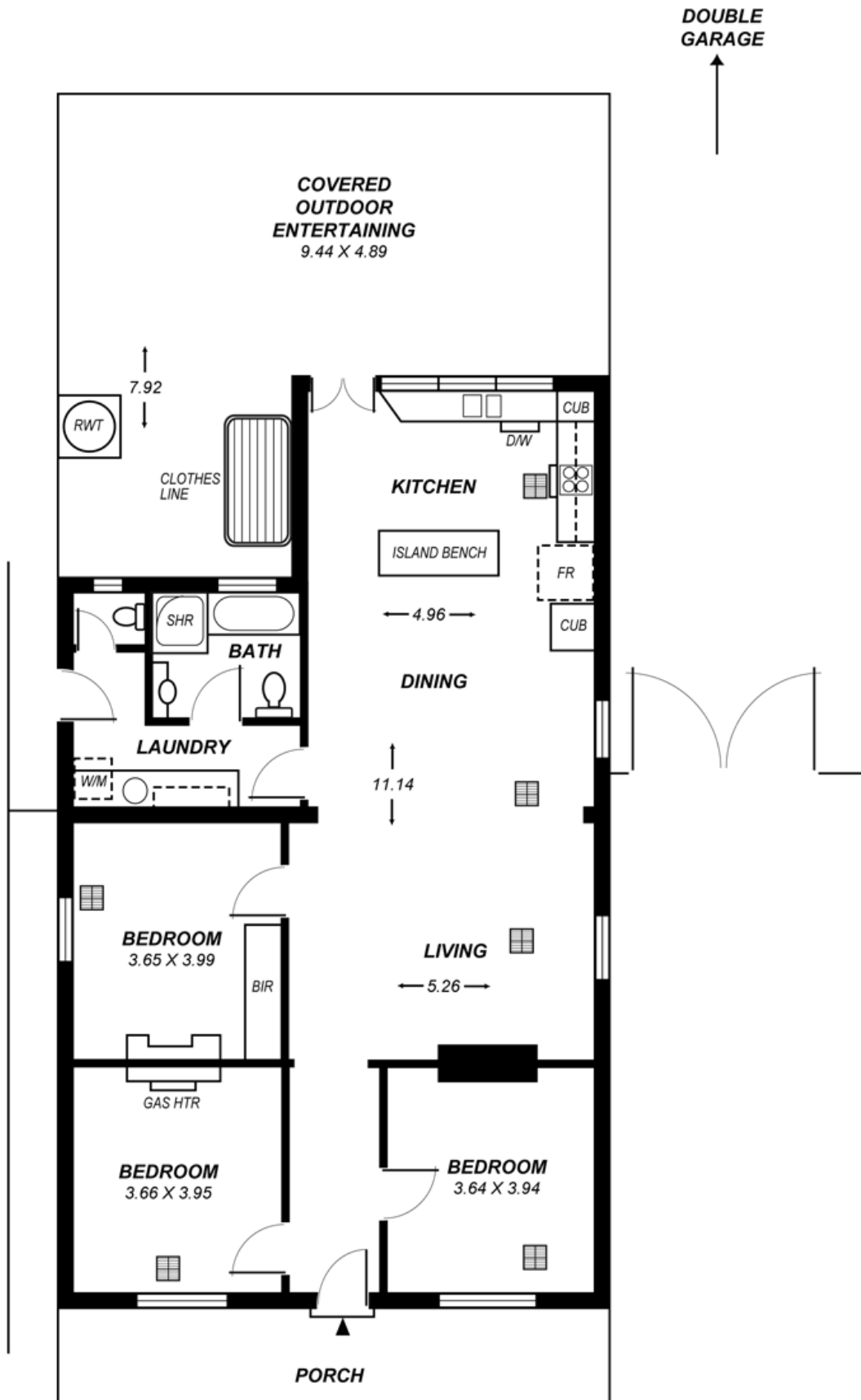
Type : House

View : <https://www.magain.com.au/property/10-thomas-street-nailsworth-sa/8435382>

[For full version visit the website](https://www.magain.com.au)

<https://www.magain.com.au>
Magain Real Estate

457 Greenhill Road Tusmore SA
08 8332 1022



SCALE, 1:100

This drawing is for illustration purposes only .
All measurements are approximate and details intended
to be relied upon should be independently verified.