




MAGAIN



6-6A Clifford Street ASCOT PARK SA

3  2  1 

Recently completed and beautifully presented these above average size courtyard homes have plenty to offer.

Finished with quality fittings throughout they comprise 3 spacious bedrooms all with built-in robes and ceiling fans (main with walk-in robe), generous open plan family rooms with stunning floors, formal living overlooking alfresco courtyard, 2 different kitchen decors with stainless steel appliances, ensuite, secure lock up garage with through access, inside entry and auto doors, full paving and landscaping with good size attractive rear gardens.

Located close to excellent local shopping facilities you will be impressed.

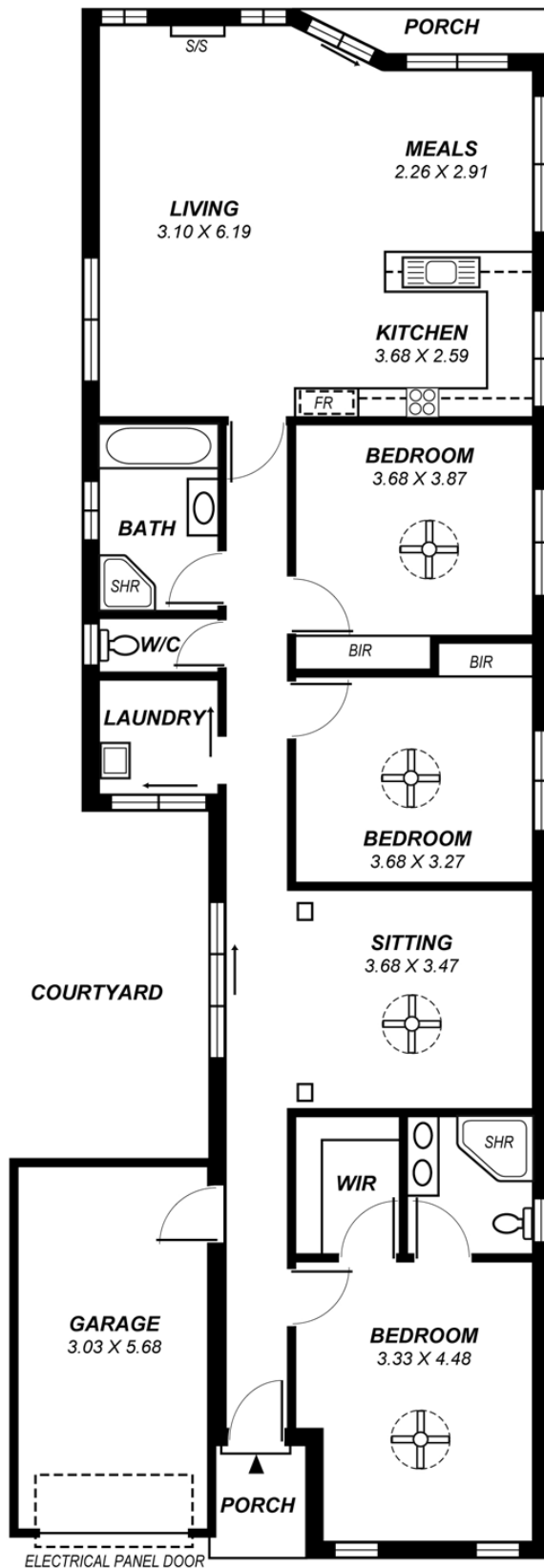
Type : House

View : <https://www.magain.com.au/property/66a-clifford-street-ascot-park-sa/8435388>

[For full version visit the website](https://www.magain.com.au)

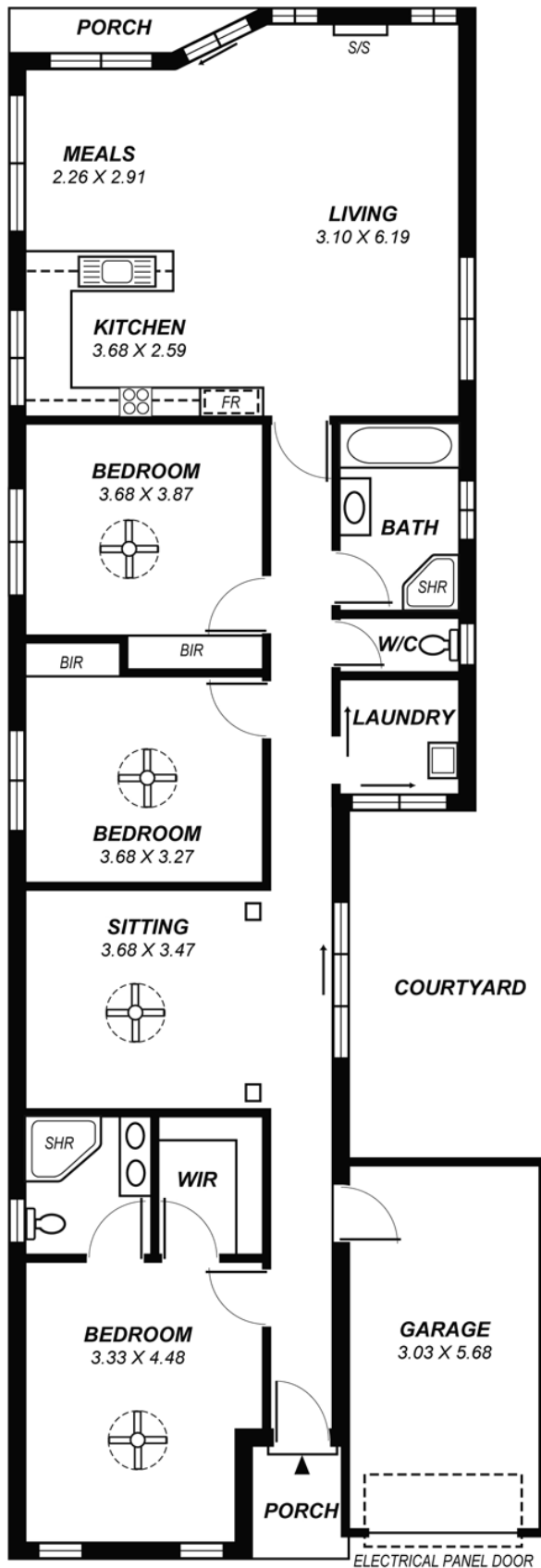
<https://www.magain.com.au>
Magain Real Estate

457 Greenhill Road Tusmore SA
08 8332 1022



SCALE, 1:100

*This drawing is for illustration purposes only .
All measurements are approximate and details intended
to be relied upon should be independently verified.*



SCALE, 1:100

*This drawing is for illustration purposes only .
All measurements are approximate and details intended
to be relied upon should be independently verified.*