

# MAGAIN



**5/427 Kensington Road ROSSLYN PARK SA**

**2** **1** **1**

Recently redecorated with excellent improvements this outstanding home unit is sure to impress. Situated in an appealing, well maintained group this single storey, colonial style property offers spacious living with a large classic box window providing extra room and a wonderful garden outlook. There are 2 bedrooms, the main with good size built in robes. The modern, stylish kitchen has been upgraded and features a stainless steel Blanco dishwasher. Other facilities include reverse cycle split system air conditioning, a separate laundry and undercover carport.

**Type** : Unit

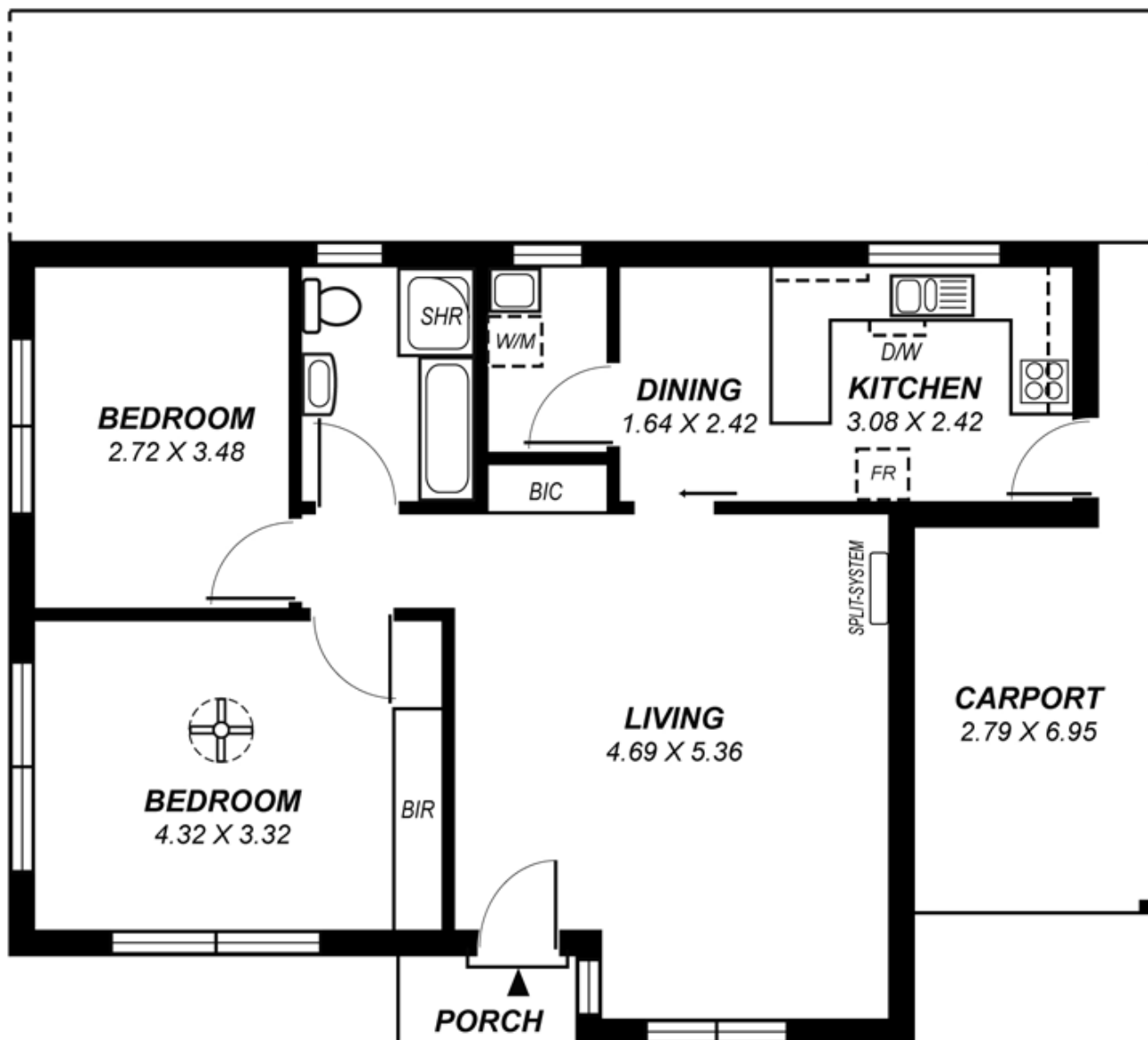
**View** : <https://www.magain.com.au/property/5427-kensington-road-rosslyn-park-sa/8435398>

Superbly located just a short stroll from both the Wattle Park shopping centre and the Erindale Village as well as the Kensington Gardens Reserve this is an excellent

[For full version visit the website](https://www.magain.com.au)

<https://www.magain.com.au>  
Magain Real Estate

457 Greenhill Road Tusmore SA  
08 8332 1022



**SCALE, 1:100**

*This drawing is for illustration purposes only .*

*All measurements are approximate and details intended to be relied upon should be independently verified.*