

MAGAIN



25 Gordo Avenue WATTLE PARK SA

5 3 2

Immaculate in every way this huge, recently renovated 2 storey home offers stylish, vogue living at its best. Offering high quality features throughout and generous accommodation including formal entrance, spacious open plan family living with stone feature fireplace and beautiful timber floors, good size bedrooms, the main with walk in robe and stylish, fully tiled ensuite and the second bedroom also with walk in robe and access to an upgraded two way bathroom. The top class kitchen is adjacent the family room with quality stainless steel appliances and Caesar bench tops, the upstairs rumpus provides an ideal retreat for the adults or the kids and the sunroom leads to the patio deck taking full advantage of the magnificent outlook.

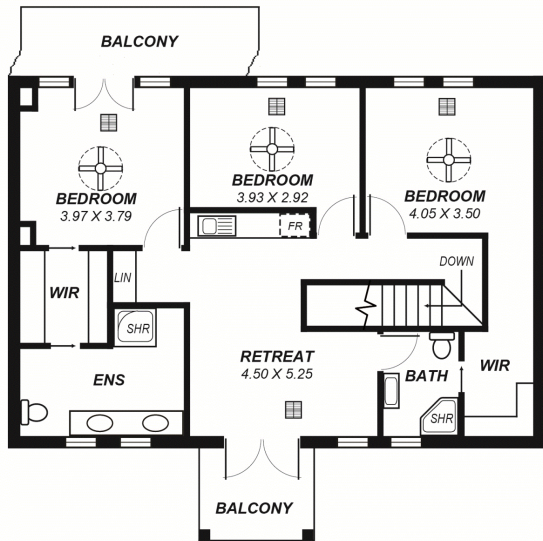
Other features include zoned ducted reverse cycle air

[For full version visit the website](https://www.magain.com.au/property/25-gordo-avenue-wattle-park-sa/8435403)

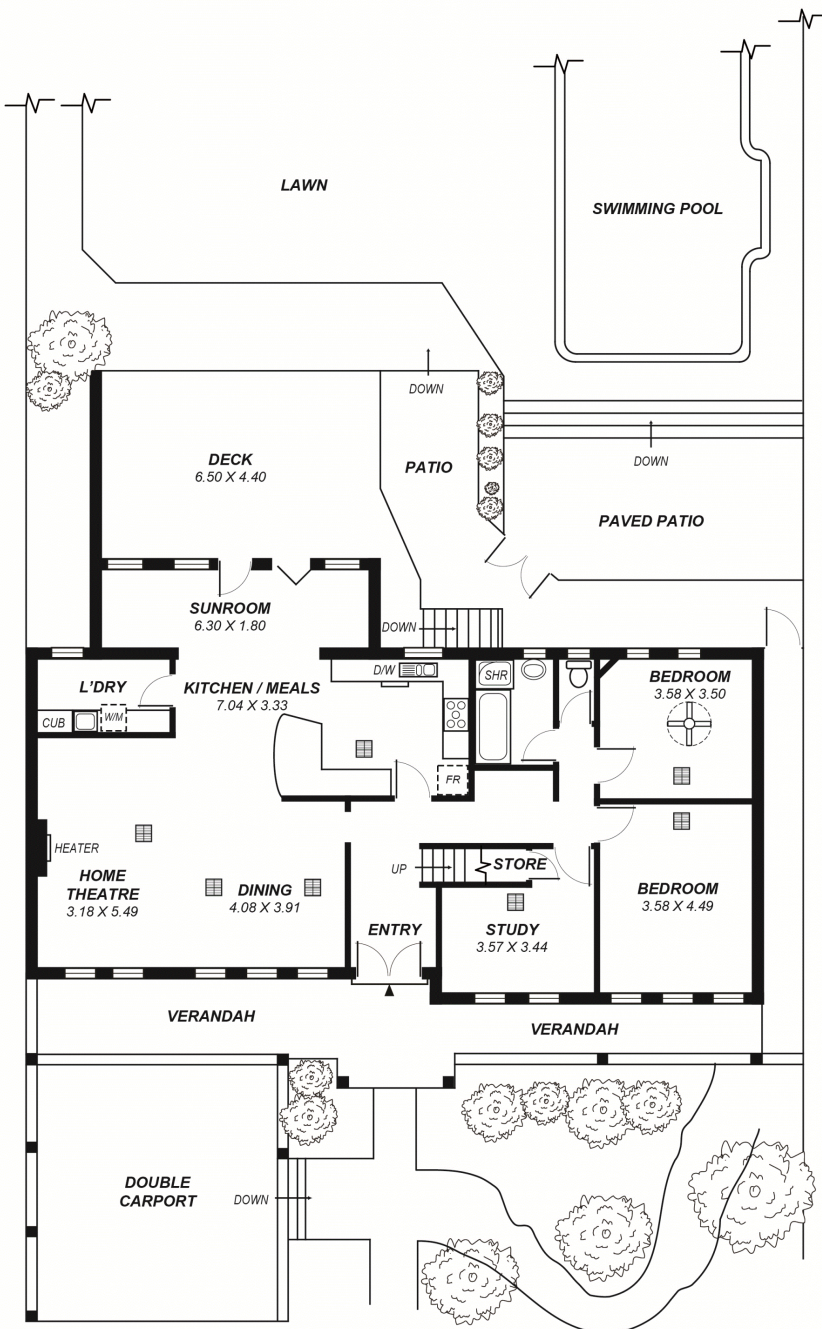
Type : House
Land Size : 734 sqm
View : <https://www.magain.com.au/property/25-gordo-avenue-wattle-park-sa/8435403>

<https://www.magain.com.au>
Magain Real Estate

457 Greenhill Road Tusmore SA
08 8332 1022



UPPER FLOOR



This drawing is for illustration purposes only .
 All measurements are approximate and details intended
 to be relied upon should be independently verified.