

MAGAIN



5 Edward Street GLYNDE SA

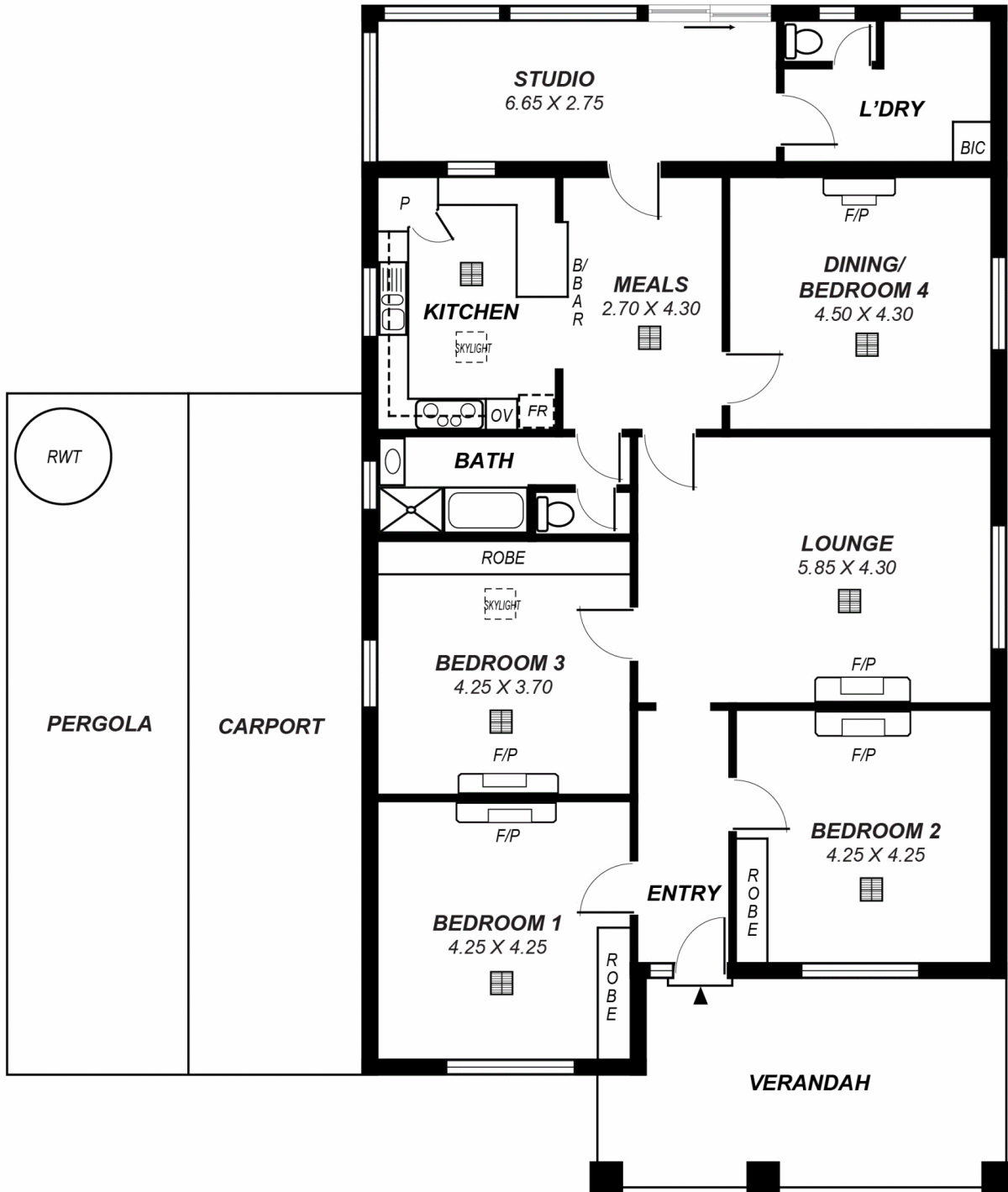
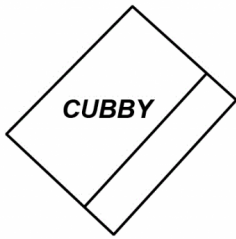
3  1  2 

Beautifully presented family home, superbly located within walking distance to many outstanding local facilities. Offering a spacious, flexible floor plan comprising 3 or 4 very good size bedrooms depending on your requirements, generous size lounge room with feature fireplace and stunning polished floor boards, renovated kitchen with loads of cupboard and bench space as well a large breakfast bar, adjacent meals area, sunroom or ideal studio, upgraded bathroom, separate laundry and second w.c. Other features include built in robes to 3 bedrooms, ducted reverse cycle air conditioning, security system and a solar hot water system.

Type : House
Land Size : 632 sqm
View : <https://www.magain.com.au/property/5-edward-street-glynde-sa/8435410>

Outside the home is surrounded by attractive, manicured gardens with auto irrigation. There is a double length

[For full version visit the website](#)



*This drawing is for illustration purposes only .
All measurements are approximate and details intended
to be relied upon should be independently verified.*