

# MAGAIN



## 2 Laurel Avenue LINDEN PARK SA

2 1 1

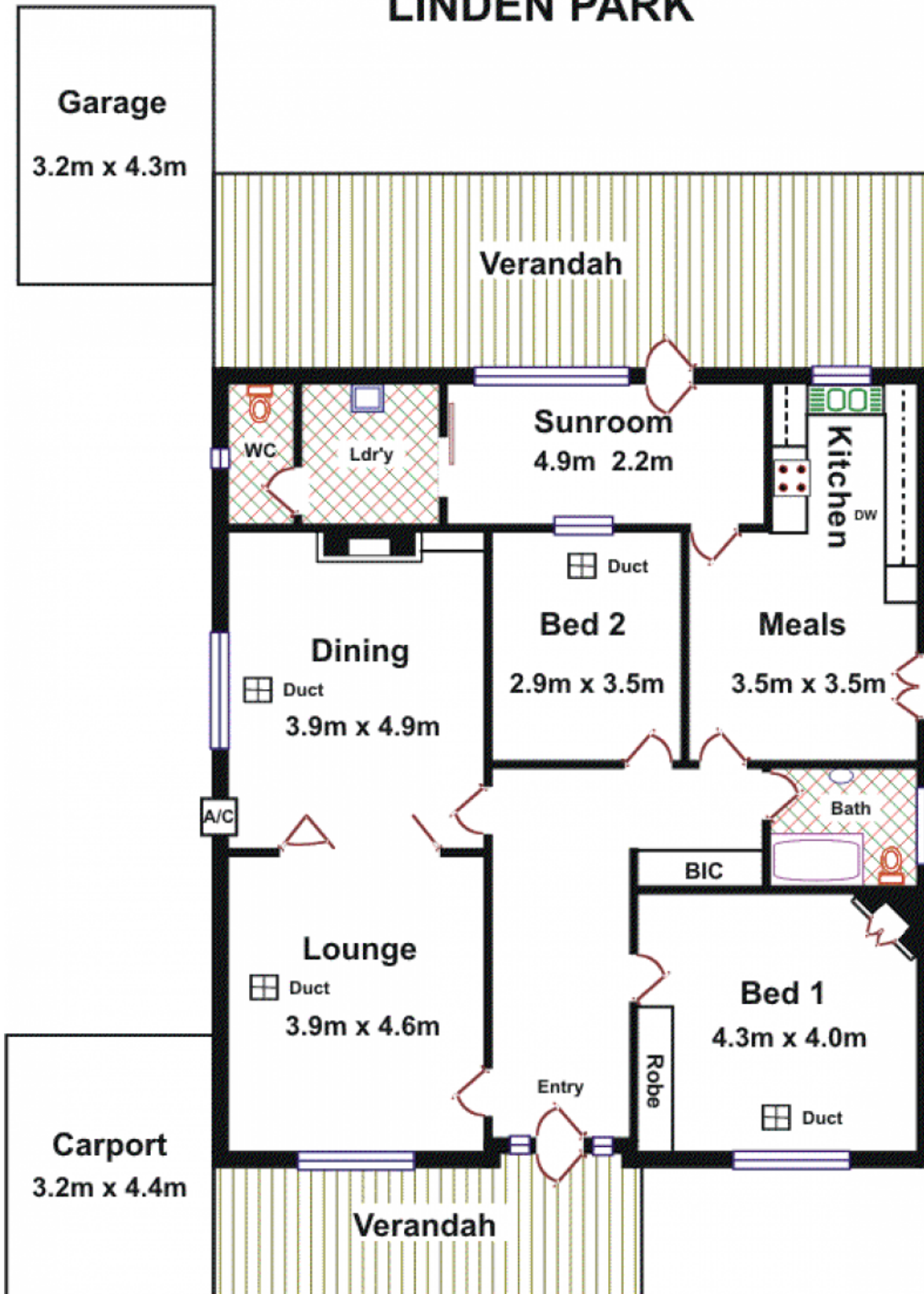
Oozing character this gem of a house is awaiting your personal touch. Situated on approximately 611 square metres the property comprises entrance hall with attractive polished floor boards, 2 bedrooms, main with built-ins, generous living room or possible 3rd bedroom, separate formal dining with fireplace, reverse cycle air conditioning, ducted gas heating, family meals area adjacent the timber kitchen, upgraded bathroom and sunroom overlooking the large undercover outdoor entertaining area.

Close to excellent schools, local shops and Burnside Village this is an outstanding opportunity to buy into the Eastern Suburbs.

**Type** : House

**View** : <https://www.magain.com.au/property/2-laurel-ave-nue-linden-park-sa/8435420>

# 2 Laurel Avenue LINDEN PARK



Area	M <sup>2</sup>
Living	138.79
Carport	14.08
Verandah	47.93
<b>Total</b>	<b>200.80</b>