




# MAGAIN



148 Second Avenue ROYSTON PARK SA

5  2  4 

This impressive character home sitting on approximately 959 square metres, has many appealing features that are perfect for the expanding family.

Walking through the front entrance, you will instantly notice the polished floor boards that lead into the newly created kitchen featuring Caesar stone benches, and boasting a large island bar as well as a Bosch stainless steel oven and range hood. Next to the kitchen, there is an equally impressive separate formal dining that has a nice outlook to the front yard.

Throughout the house there are 5 generous size bedrooms, with an option to create a study, as well as 2 bathrooms including an ensuite. The master room has a

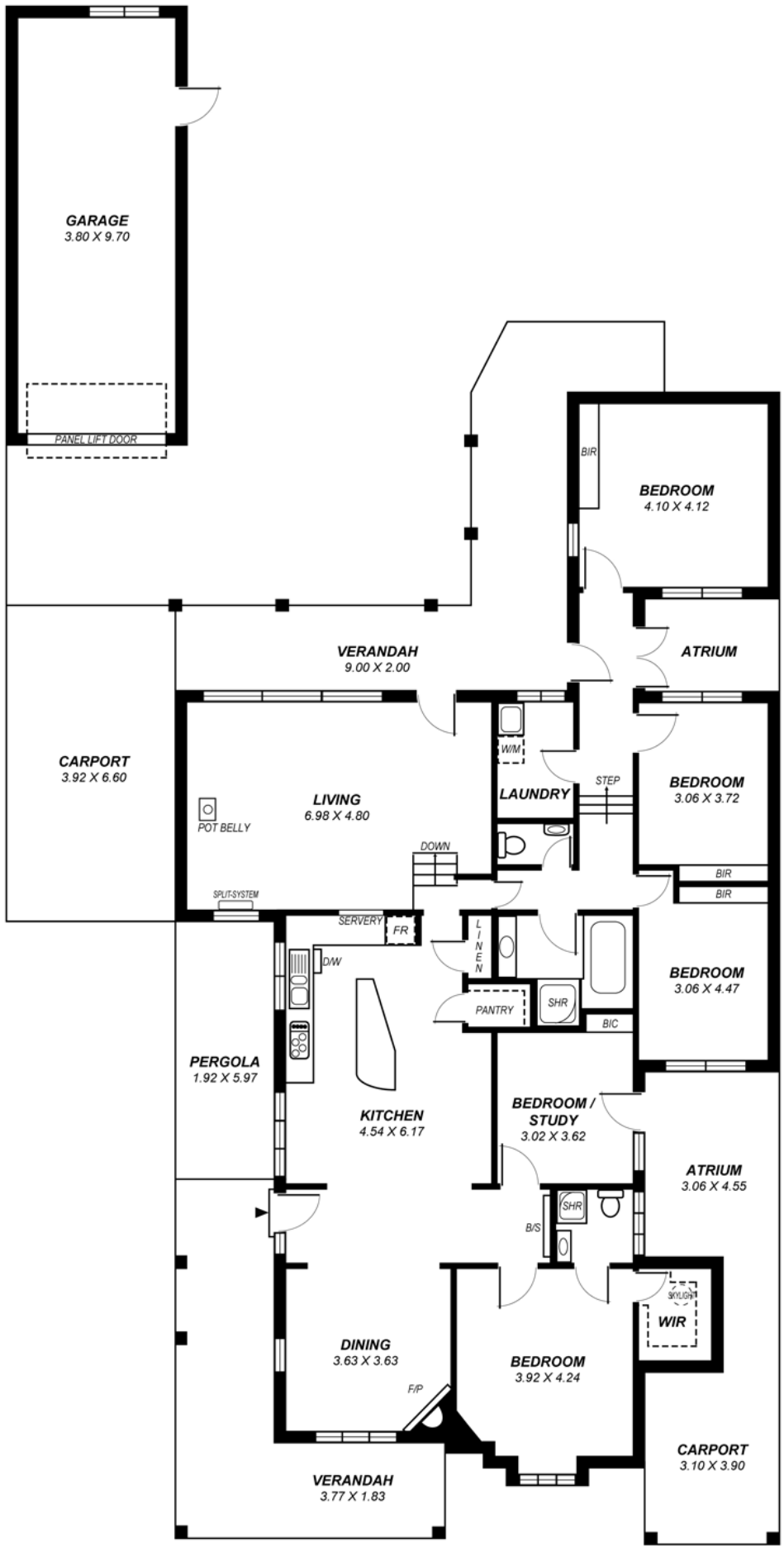
**Type** : House

**View** : <https://www.magain.com.au/property/148-second-avenue-royston-park-sa/8435442>

[For full version visit the website](https://www.magain.com.au)

<https://www.magain.com.au>  
Magain Real Estate

457 Greenhill Road Tusmore SA  
08 8332 1022



This drawing is for illustration purposes only .  
 All measurements are approximate and details intended  
 to be relied upon should be independently verified.