




# MAGAIN



**8 Pulford Grove MAGILL SA**

4  2  2 

This well positioned property offers a tremendous opportunity for the expanding family looking to reside in an area close to many top schools, shops and other amenities. Situated on over 800 square meters, and with the back yard facing Nightingale Reserve, this spacious 4 bedroom, 2 bathroom home provides many options for those seeking a residence where they can make create their own style.

**Type** : House

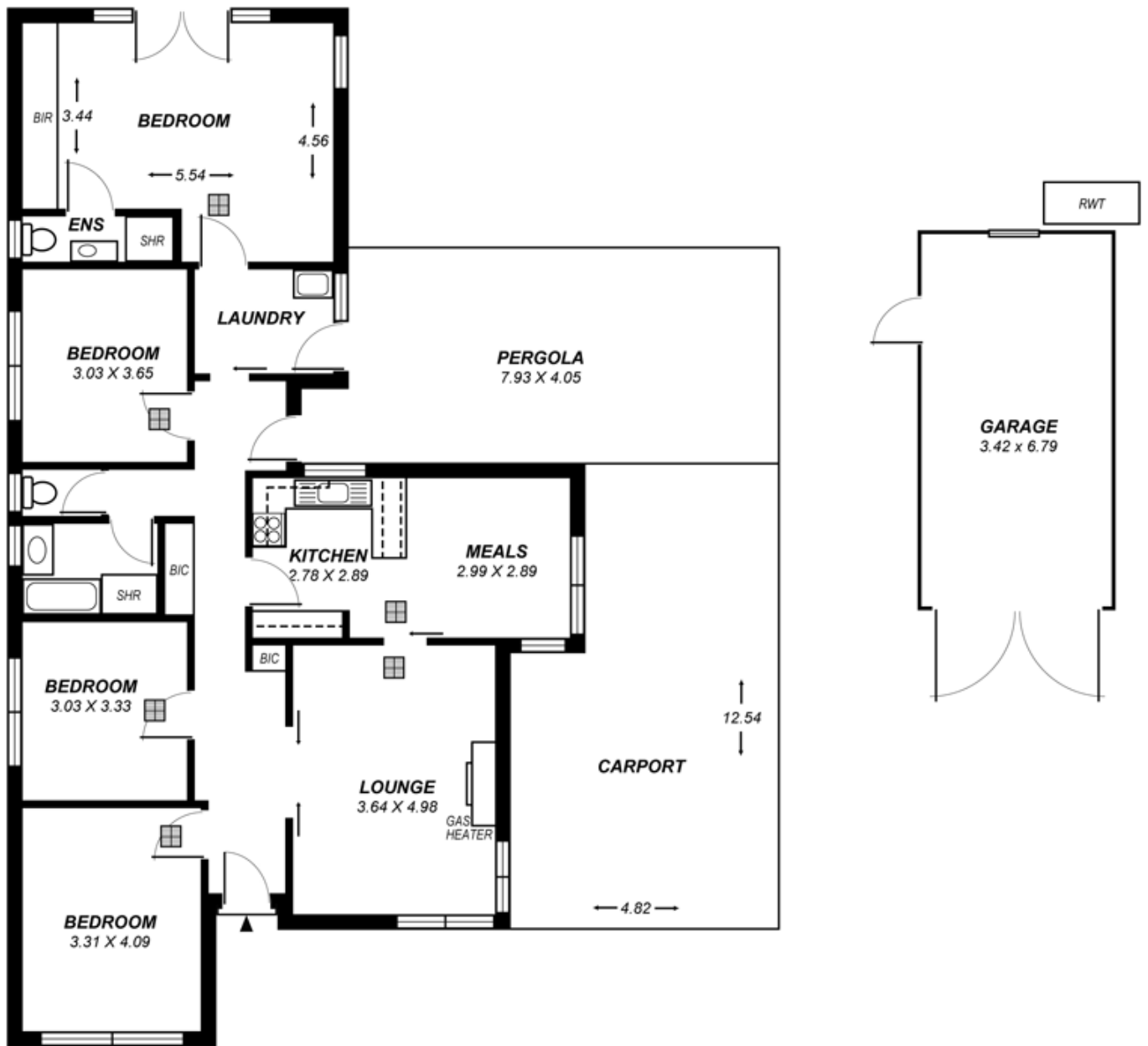
**View** : <https://www.magain.com.au/property/8-pulford-grove-magill-sa/8435459>

This double brick home also features a separate lounge, adjoining kitchen/ dining, ducted air conditioning and gas heating. The master bedroom contains French doors that open out to the rear yard, creating a perfect setting for the morning cuppa. The back garden is without doubt a key aspect of the property providing a lovely outlook, as well as having a good size shed, and plenty of space to allow for

[For full version visit the website](#)

<https://www.magain.com.au>  
Magain Real Estate

457 Greenhill Road Tusmore SA  
08 8332 1022



*This drawing is for illustration purposes only.  
 All measurements are approximate and details intended  
 to be relied upon should be independently verified.*