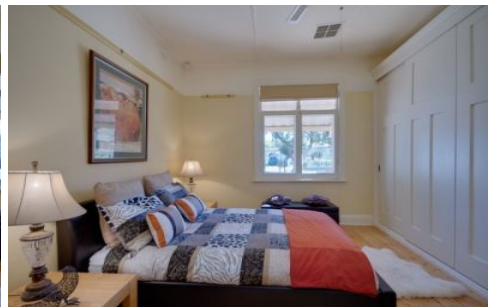


MAGAIN



21 Second Avenue SEFTON PARK SA

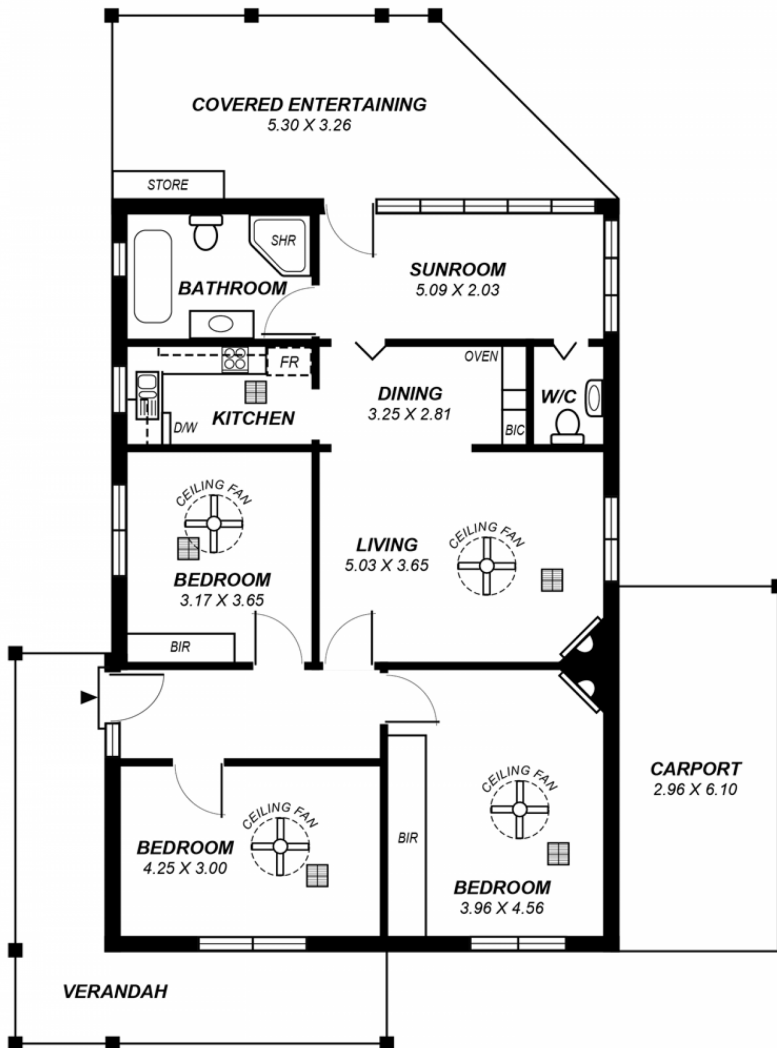
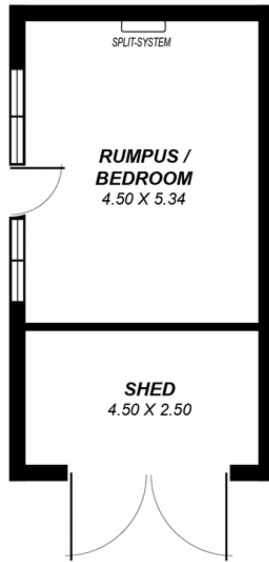
4 1 1

This well appointed character home has many impressive features that would suit the expanding family who are seeking to reside in a lovely suburb located close to local schools and shops.

Type : House
Land Size : 664 sqm
View : <https://www.magain.com.au/property/21-second-avenue-sefton-park-sa/8435466>

This delightful property features up to four bedrooms with the option of a separate office / rumpus room complete with split system air, a compact galley kitchen, separate lounge, sun room, two toilets and a lovely spacious bathroom. There are wooden floorboards throughout, with security system installed, ducted reverse cycle heating and cooling, and beautiful ornate fireplaces in the master bedroom and lounge. The rear yard has an undercover entertaining area, and looks out to generous size garden with a separate shed.

[For full version visit the website](#)



*This drawing is for illustration purposes only .
 All measurements are approximate and details intended
 to be relied upon should be independently verified.*