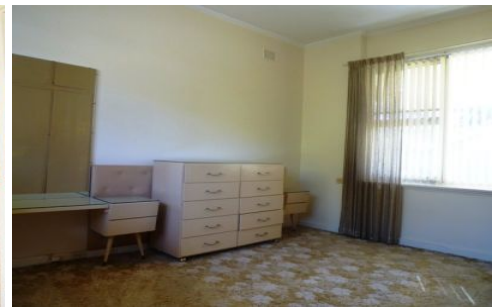


# MAGAIN



31 Gilbert Road SOMERTON PARK SA

3 1 3

Situated on a large allotment of approximately 715 square metres, with a generous frontage of approximately 16 metres, be the first to renovate or redevelop this property (stcc).

**Type** : House  
**Land Size** : 715 sqm  
**View** : <https://www.magain.com.au/property/31-gilbert-road-somerton-park-sa/8435467>

The property comprises three good sized bedrooms, main bedroom with floor to ceiling built-in robes, updated kitchen, spacious living area with air-conditioning, neat and tidy bathroom with full size bath tub and separate laundry.

Other features include a large outdoor entertaining area ideal for those summer bbqs, large rear yard and a secure lock up garage.

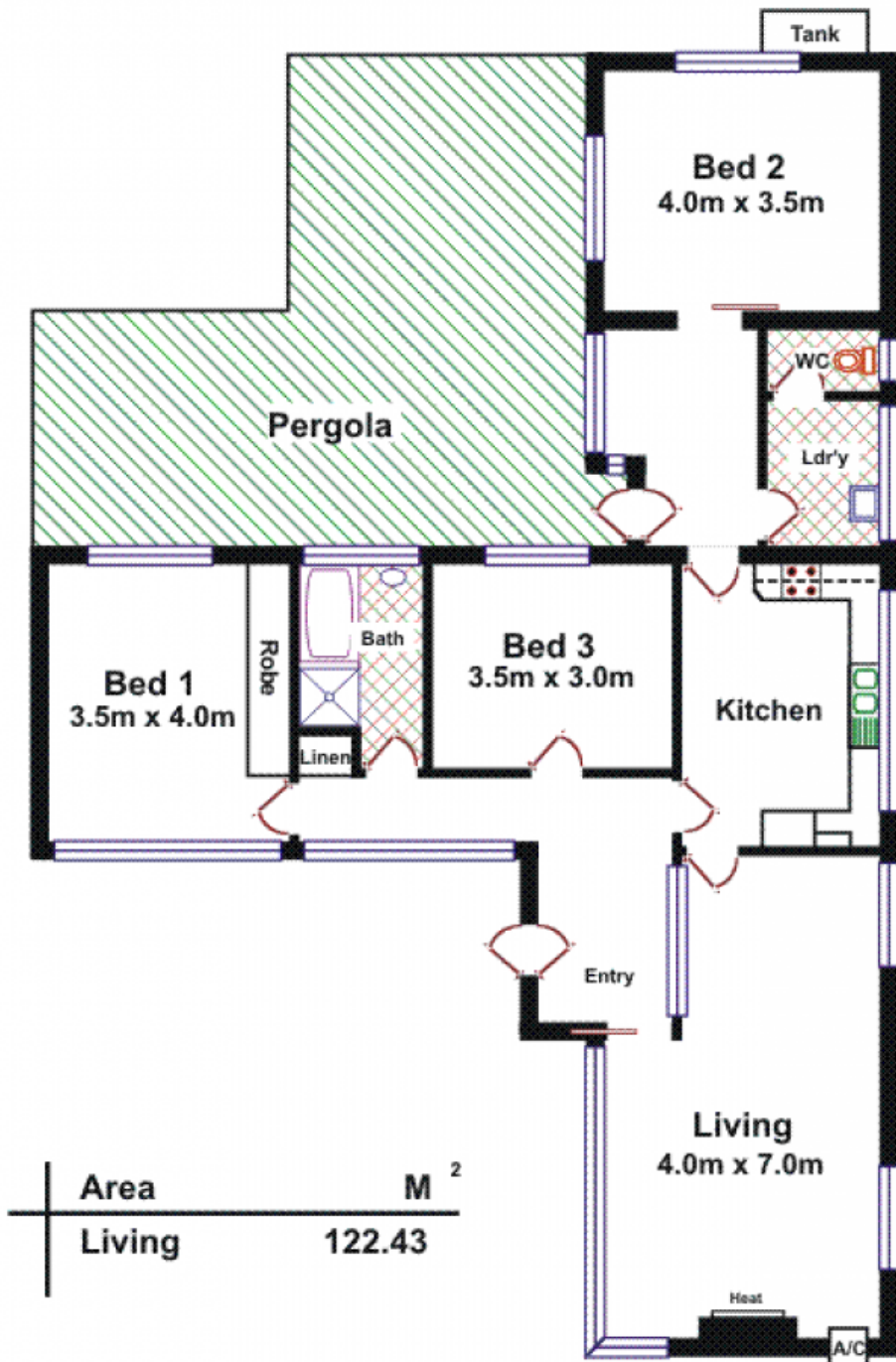
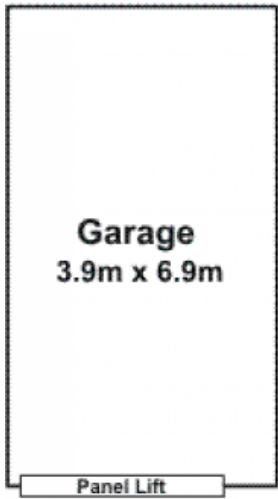
Ideally located in close proximity to local shops and public

[For full version visit the website](#)

<https://www.magain.com.au>  
Magain Real Estate

457 Greenhill Road Tusmore SA  
08 8332 1022

# 31 Gilbert Road SOMERTON PARK



Area	M <sup>2</sup>
Living	122.43