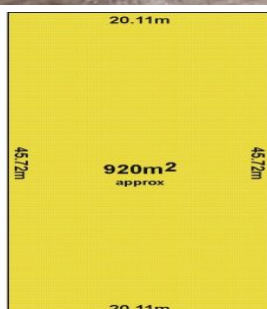


MAGAIN



17 First Avenue PAYNEHAM SOUTH SA

3 1 2

Quaint 3 bedroom painted red brick bungalow style home in original condition set on this magnificent allotment of 920sqm (approx) with northerly rear aspect.

Zoned R2A with a frontage of 20.11m with a depth of 45.72m (approx), this magnificent site offers exciting possibilities.

With huge potential in this wonderful location to upgrade and extend the existing home or demolish and build a wonderful family home on this large allotment, or re-develop the site and sub-divide the land for new homes (subject to all necessary consents) the choice is yours.

The home itself has a number of original character features

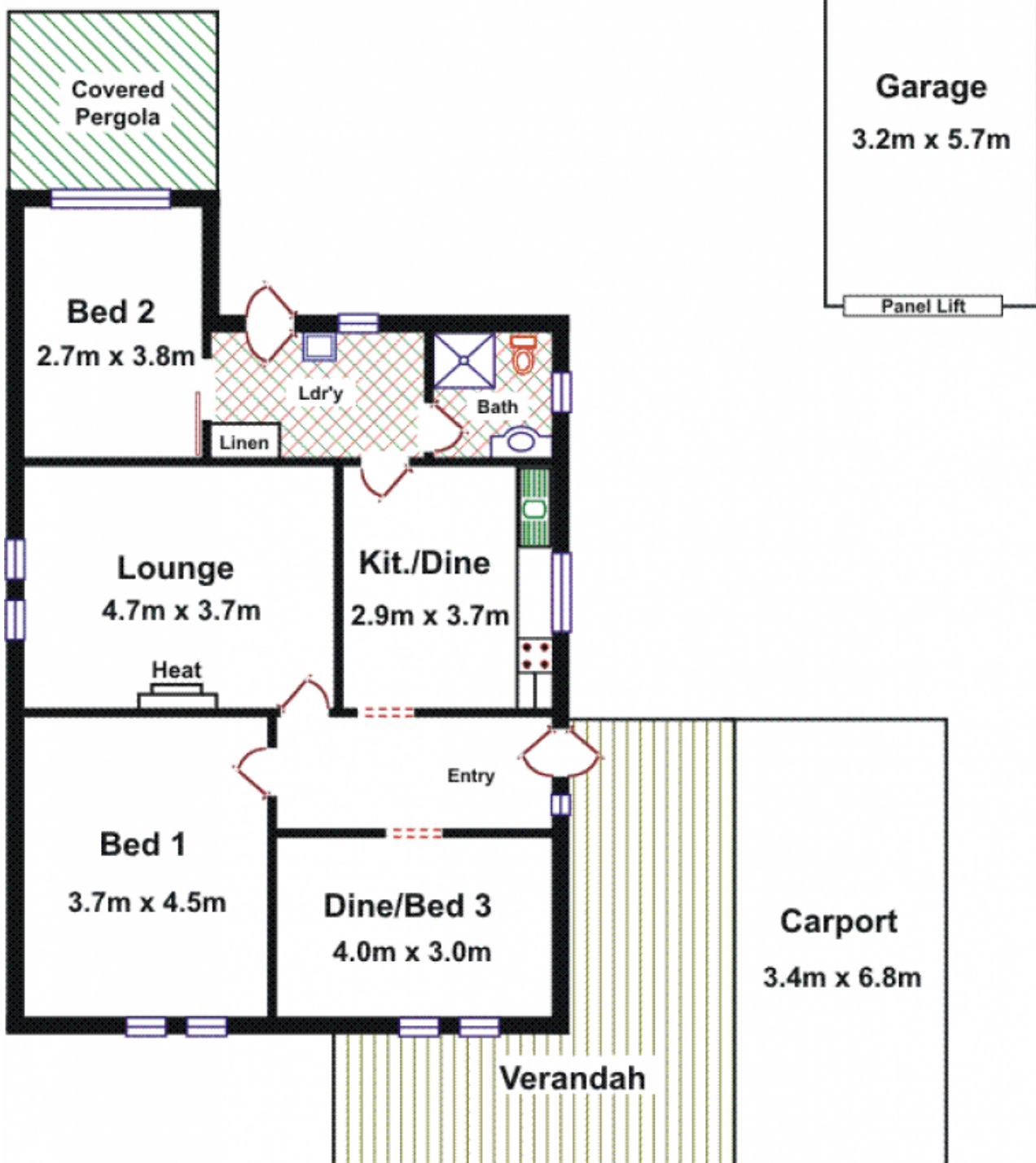
[For full version visit the website](https://www.magain.com.au/property/17-first-avenue-payneham-south-sa/8435474)

Type : House
Land Size : 920 sqm
View : <https://www.magain.com.au/property/17-first-avenue-payneham-south-sa/8435474>

17 First Avenue PAYNEHAM SOUTH



Area	M ²
Living	97.95
Carport	23.12
Verandah	24.08
Total Approx	145.15



20.11m

45.72m

920m²
approx

45.72m

20.11m