

MAGAIN



33 Stonyfell Road WATTLE PARK SA

3 1 1

Immaculate in every way this appealing solid brick property is superbly located opposite Ferguson Reserve.

Surrounded by attractive, established front and rear gardens the home downstairs comprises a formal entrance, generous living with large windows overlooking the magnificent grounds, separate formal dining leading to the top class kitchen renovation with Caesar bench tops and Bosch stainless steel appliances. Downstairs features a separate laundry and separate w.c. There is excellent under stair storage.

Upstairs there are 3 bedrooms, the master has a large private balcony retreat with superb parkland views, the second bedroom is also a double with rear garden views.

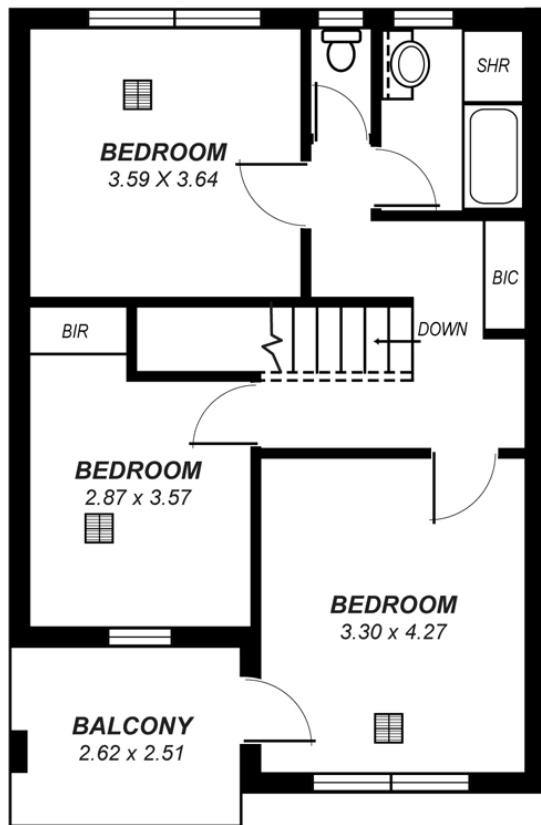
Type : House

View : <https://www.magain.com.au/property/33-stonyfell-road-wattle-park-sa/8435476>

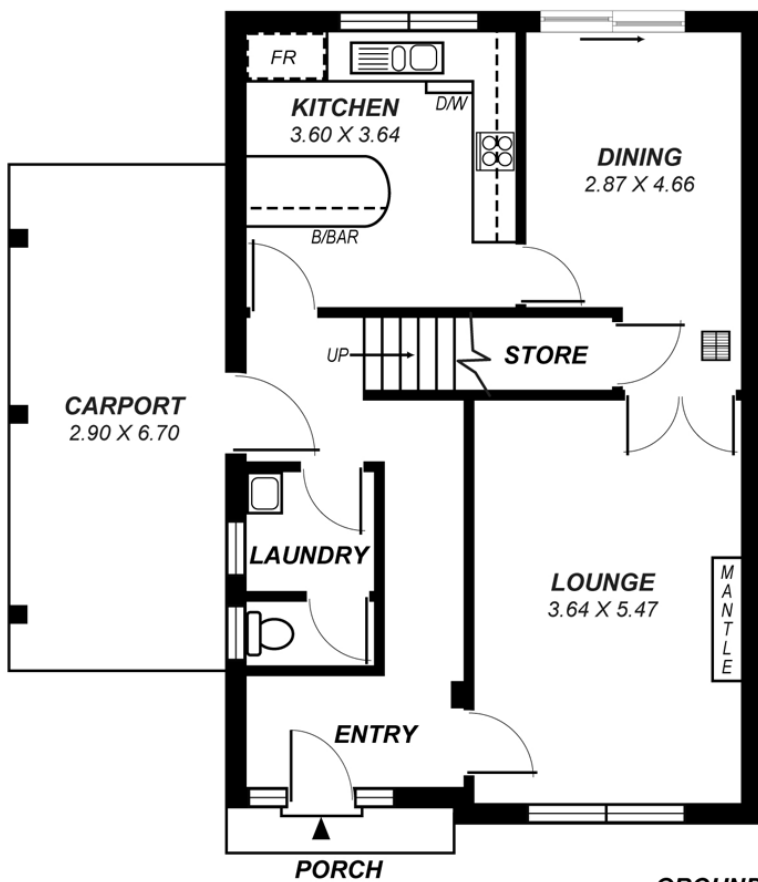
[For full version visit the website](https://www.magain.com.au/property/33-stonyfell-road-wattle-park-sa/8435476)

<https://www.magain.com.au>
Magain Real Estate

457 Greenhill Road Tusmore SA
08 8332 1022



UPPER



GROUND

*This drawing is for illustration purposes only .
All measurements are approximate and details intended
to be relied upon should be independently verified.*

