




MAGAIN



10 Manoah Drive UPPER STURT SA

4  2  2 

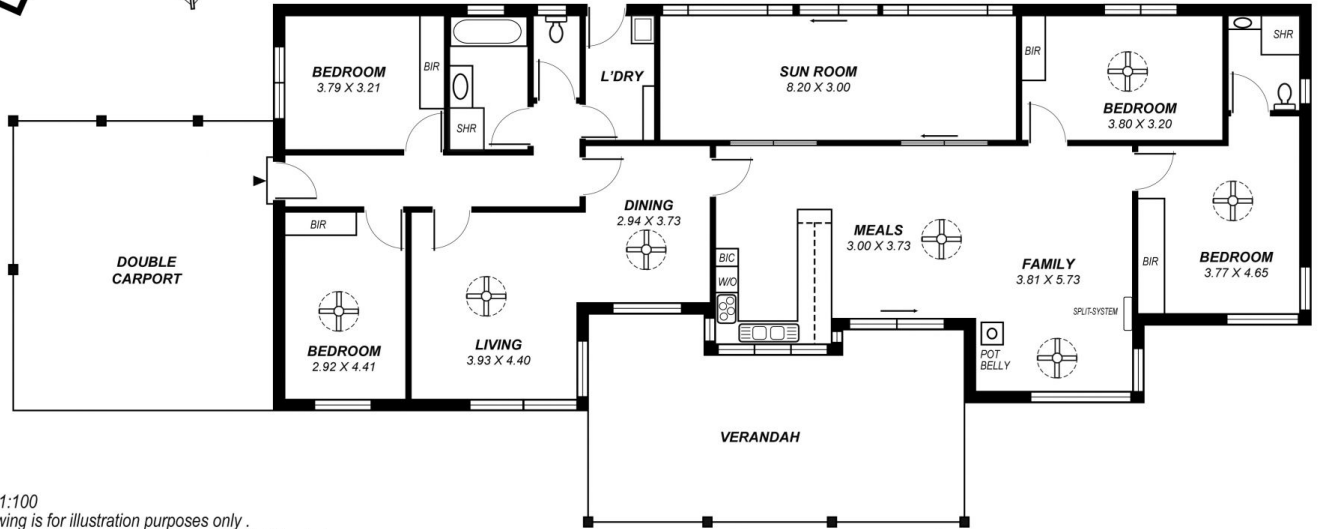
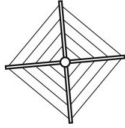
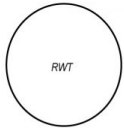
Beautifully positioned and in one of Upper Sturts best streets adjacent the historic Manoah Estate.

On the higher, hill side of Manoah Drive, in a scenic bush setting and taking advantage of its position, this wonderful home has outstanding views over the valley and hills. Surrounded by natural flora in this picturesque tree studded location this hidden gem has plenty to offer. With generous accommodation including 4 bedrooms (all with built-ins), open plan family room adjacent large kitchen with a wonderful outlook, separate lounge and dining room, spacious sun room/rumpus, reverse cycle split system air cond. ,ensuite and main bathroom with spa bath.

Outside the property offers a double carport, plenty of room

[For full version visit the website](https://www.magain.com.au/property/10-manoah-drive-upper-sturt-sa/8435495)

Type : House
Land Size : 4000 sqm
View : <https://www.magain.com.au/property/10-manoah-drive-upper-sturt-sa/8435495>



SCALE, 1:100
This drawing is for illustration purposes only.
All measurements are approximate and details intended
to be relied upon should be independently verified.

TOTAL LIVABLE AREA = 181.55 M³