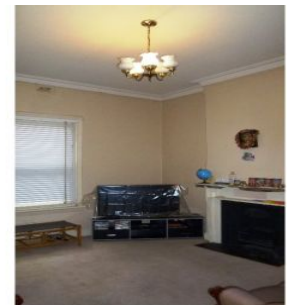
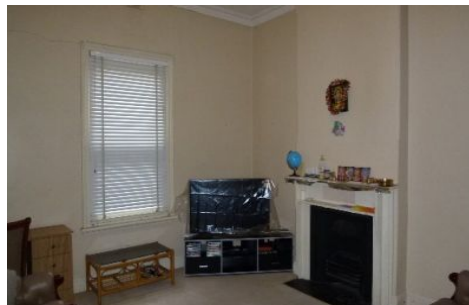


# MAGAIN



ASHFORD ROAD



35 Ashford Road KESWICK SA

3 1 2

Situated only minutes from the Adelaide CBD this property offers an excellent investment with huge redevelopment potential to establish a commercial or residential holding in this highly sought after location (subject to all Council consents).

**Type** : House  
**Land Size** : 696 sqm  
**View** : <https://www.magain.com.au/property/35-ashford-road-keswick-sa/8435610>

Set adjacent to other commercial and residential properties with good access from major and secondary arterial roads including ANZAC Highway, Richmond Road and South Road.

The property could also be upgraded as a residence or continued as a rental investment.

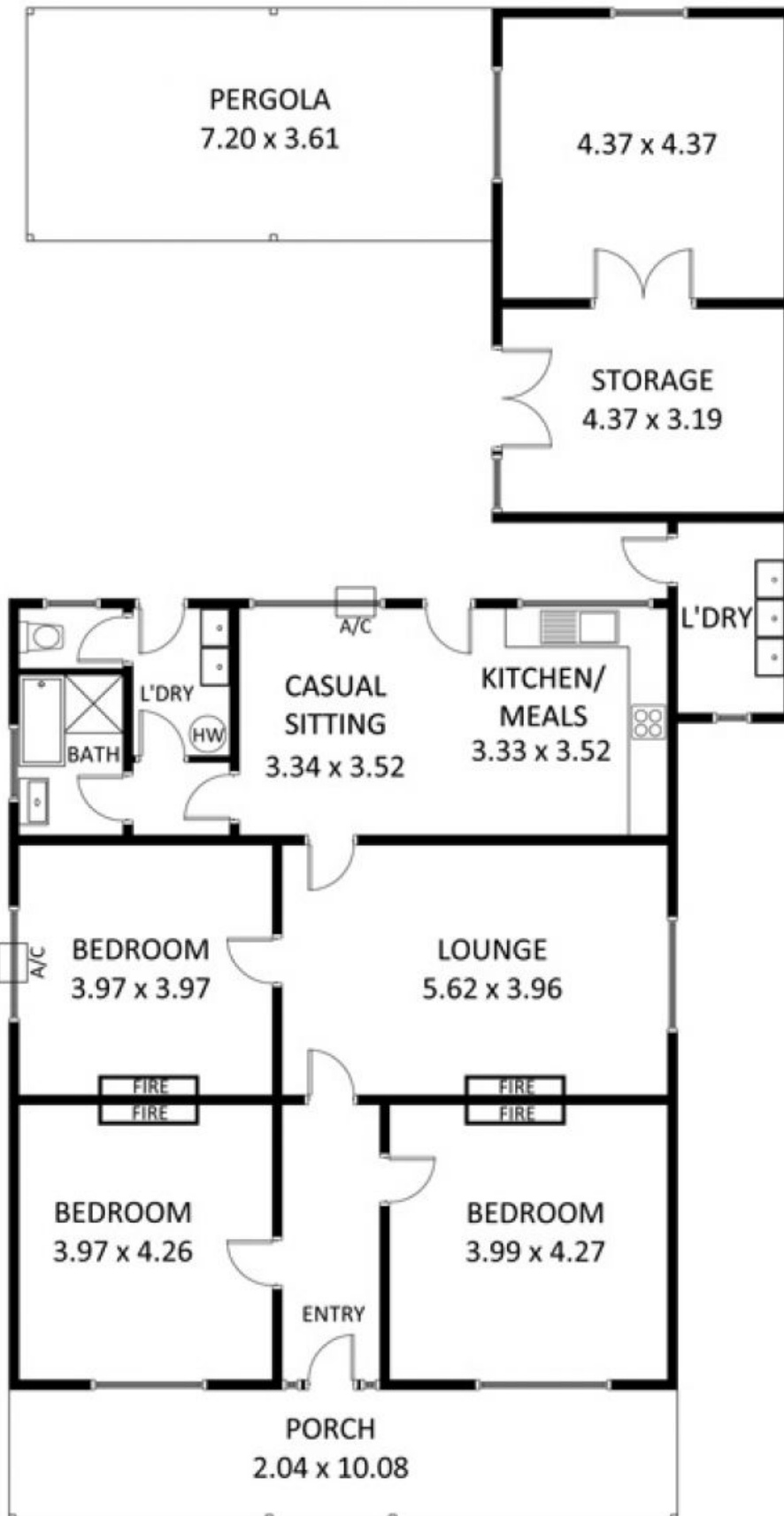
Currently leased on a periodic tenancy allowing vacant

[For full version visit the website](#)

# KESWICK

## 35 Ashford Road

This drawing is for illustrative purposes only  
All measurements are approximate and details intended  
to be relied upon should be independently verified.





# ASHFORD ROAD

