

MAGAIN



4 Yeltana Avenue WATTLE PARK SA

3  1  1 

CONVENTIONAL HOME IN NEED OF A NEW LIFE

Brilliantly located close to much sought after schools, popular parks, public transport and excellent local shopping, this is a tremendous opportunity to renovate or stamp your own style on this eastern suburbs allotment.

The brick home with tiled roof offers 3 bedroom accommodation, meals area adjacent to the kitchen, gas cooking and lounge with double doors leading to the rear yard. There are built in robes in the main bedroom, separate laundry and a fabulous rear yard. A single vehicle garage provides undercover parking while there is off street parking space for multiple vehicles.

Type : House

View : <https://www.magain.com.au/property/4-yeltana-avenue-wattle-park-sa/8435613>

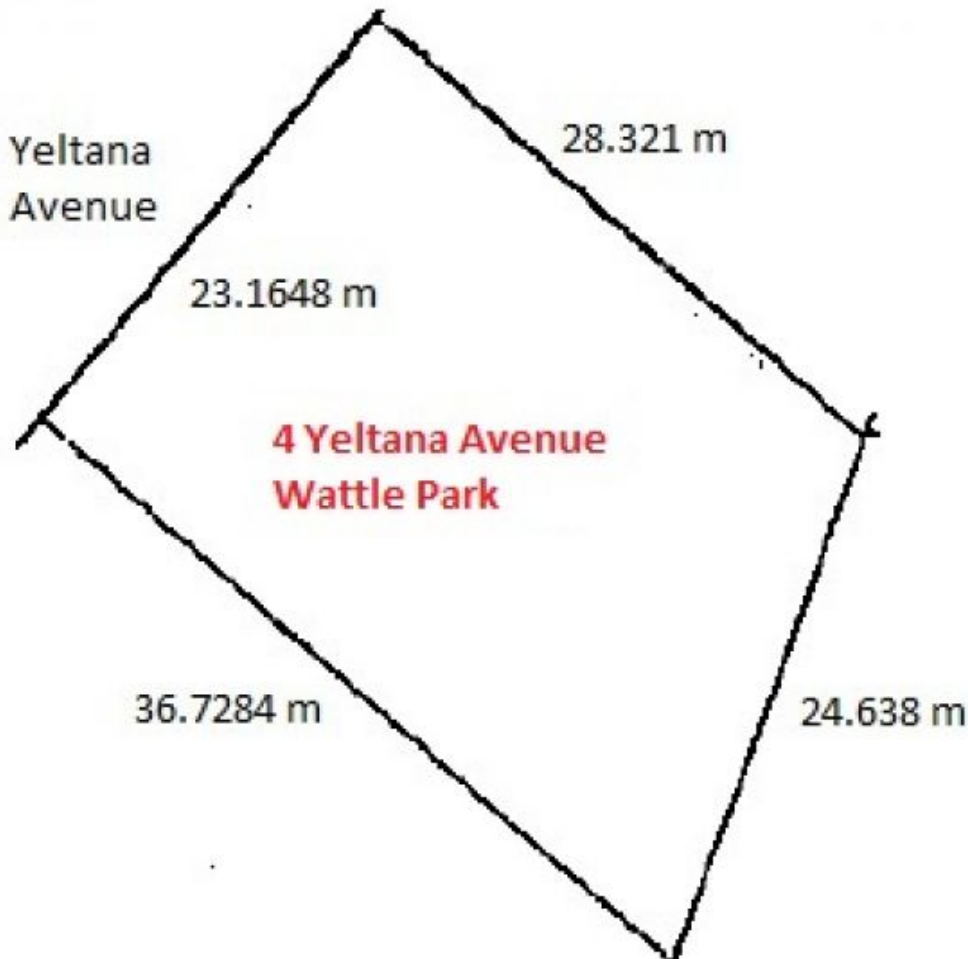
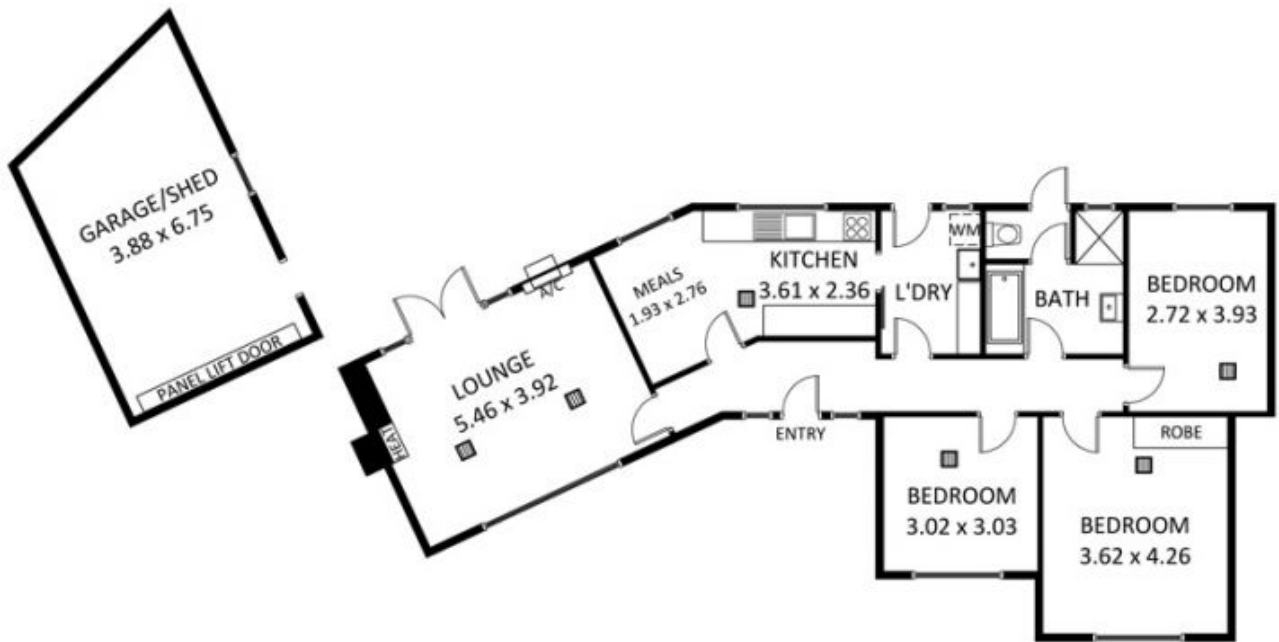
[For full version visit the website](https://www.magain.com.au)

<https://www.magain.com.au>
Magain Real Estate

457 Greenhill Road Tusmore SA
08 8332 1022

WATTLE PARK
4 Yeltana Avenue

This drawing is for illustrative purposes only.
All measurements are approximate and details intended
to be relied upon should be independently verified.



Approx
755m²