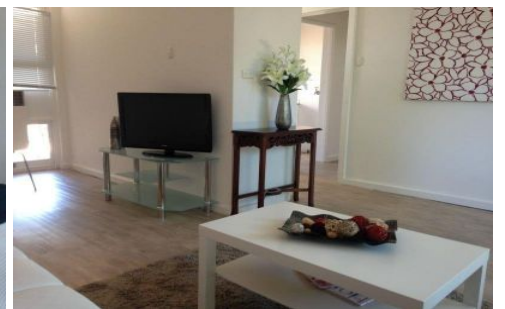
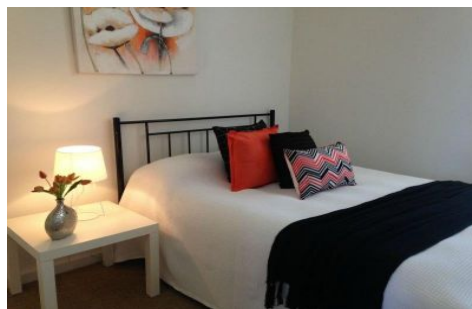


# MAGAIN



## Unit 1/623 Portrush Road GLEN OSMOND SA

1  1  1 

Situated in a group of 4 units, this will have large appeal for the savvy investor either looking to enter the market or build their existing portfolio.

Features include:

- Bedroom with built-in robes
- Upgraded bathroom
- Galley kitchen
- Lounge
- Wall unit heating and cooling
- New flooring
- Undercover carport with rear entrance
- Close to public transport
- Separate laundry

[For full version visit the website](https://www.magain.com.au/property/unit-1623-por-trush-road-glen-osmond-sa/8435661)

**Type** : Unit  
**View** : <https://www.magain.com.au/property/unit-1623-por-trush-road-glen-osmond-sa/8435661>

# GLEN OSMOND

## 1/623 Portrush Road

This drawing is for illustrative purposes only  
All measurements are approximate and details intended to be relied upon should be independently verified.

SHED

