




# MAGAIN



12 Waratah Way STONYFELL SA

4  2  2 

ADJACENT MICHAEL PERRY RESERVE

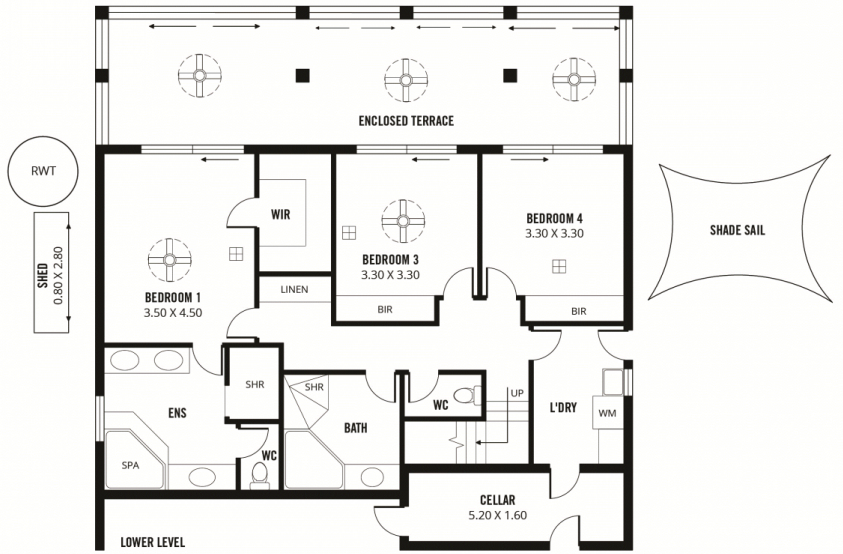
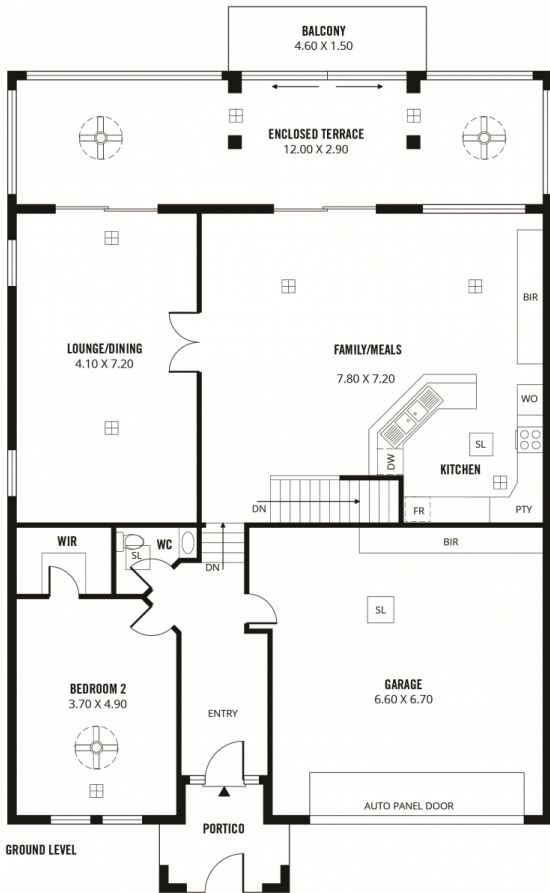
Inspection By Appointment

Situated in one of Adelaide's most sought after leafy eastern suburbs, this much-loved family home sits on approximately 1,424 square metres overlooking the beautiful Michael Perry Reserve. Set at the end of a quiet cul-de-sac with the reserve an extension of your own back garden this is your chance to secure a rare and unique offering in this desirable suburb and enjoy the incredible surroundings it has to offer.

As you enter you are greeted by a stunning entrance hall which opens up to the incredible open plan living room

[For full version visit the website](https://www.magain.com.au/property/12-waratah-way-stonyfell-sa/8435748)

**Type** : House  
**Land Size** : 1455 sqm  
**View** : <https://www.magain.com.au/property/12-waratah-way-stonyfell-sa/8435748>



<b>384m<sup>2</sup></b>	244m <sup>2</sup>	2m <sup>2</sup>	46m <sup>2</sup>	6m <sup>2</sup>	86m <sup>2</sup>
<b>TOTAL</b>	Living	Shed	Garage	Portico	Balcony/ Terrace

Scale in metres. This drawing is for illustration purposes only. All measurements are approximate and details intended to be relied upon should be independently verified.

Produced by The Fotobase Group