

# MAGAIN



## Unit 3/6 Seaforth Avenue HAZELWOOD PARK SA

3 1 1

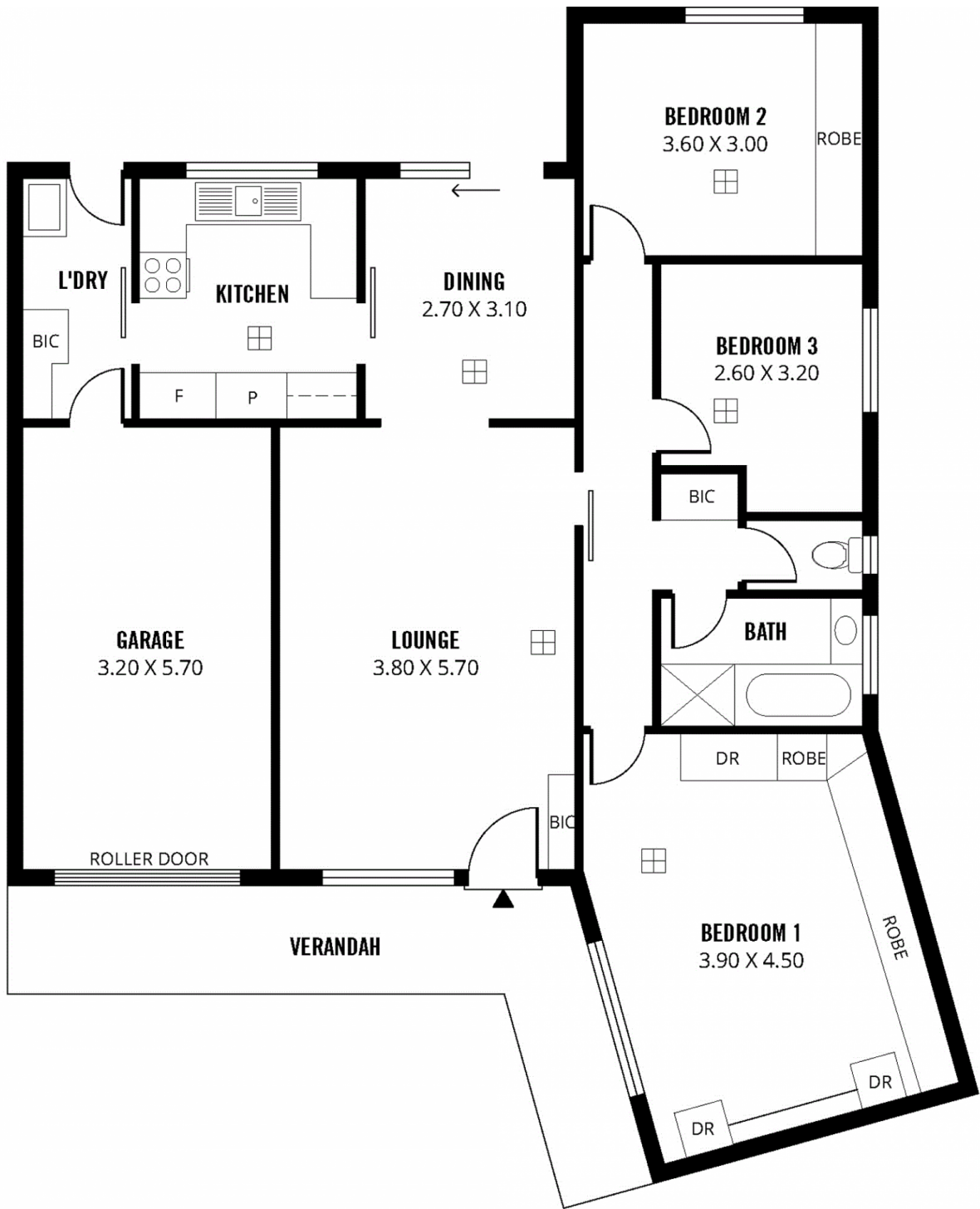
Beautifully positioned within a small and appealing group of four, the property is nicely elevated providing a fantastic outlook.

Offering a spacious floor plan where the exceptional size lounge, dining and kitchen are all separate rooms, 2 out of the 3 bedrooms have built-in robes, there's a separate laundry, secure garaging, a generous size fully enclosed courtyard garden and a private front verandah from which to admire the view.

Plenty of opportunity exists for you to update the interior of this home unit to suit your own definitive style. The ducted reverse cycle air-conditioning has been updated and services all living and bedrooms.

[For full version visit the website](#)

**Type** : Unit  
**View** : <https://www.magain.com.au/property/unit-36-seaforth-avenue-hazelwood-park-sa/8435758>



**161m<sup>2</sup>**

**TOTAL**

127m<sup>2</sup>

Living

13m<sup>2</sup>

Verandah

21m<sup>2</sup>

Garage

Scale in metres. This drawing is for illustration purposes only. All measurements are approximate and details intended to be relied upon should be independently verified.

Produced by **The Fotobase Group**