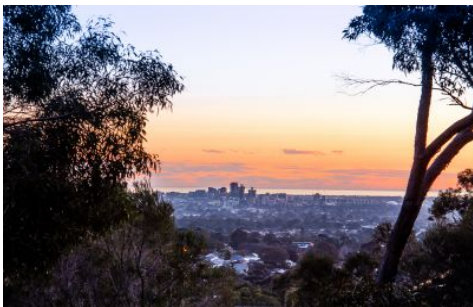





MAGAIN



20 Tatiara Grove ROSTREVOR SA

4  2  6 

The best of both worlds - a graceful residence with commanding views sited on approximately 4.4 acres (1.78 Hectares) within close proximity to Adelaide's CBD.

Located at the top of a quiet cul-de-sac, this much loved executive entertainer and well-proportioned family home provides a front row seat to daily dramatic city and sunset views and a proliferation of colourful native birds that flutter throughout the garden.

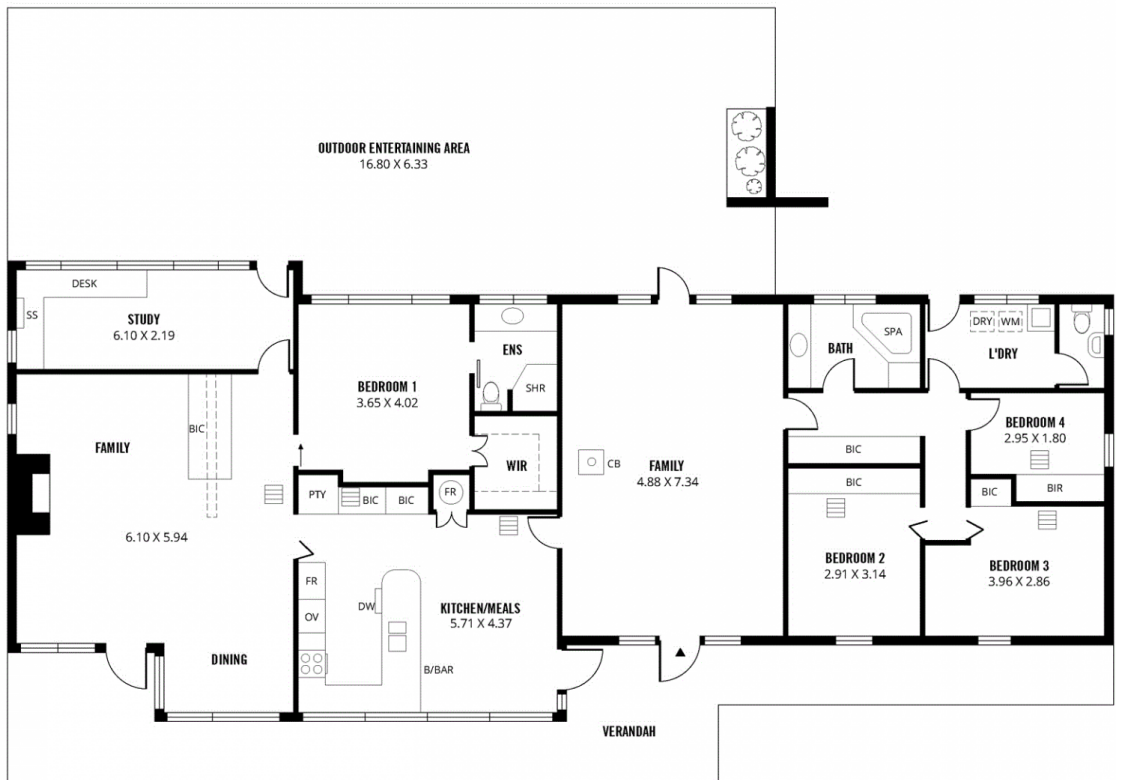
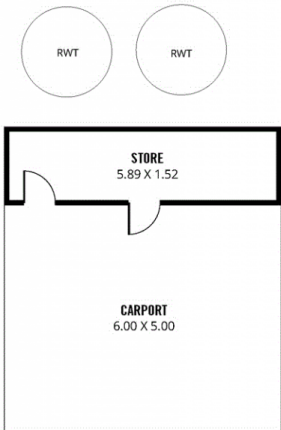
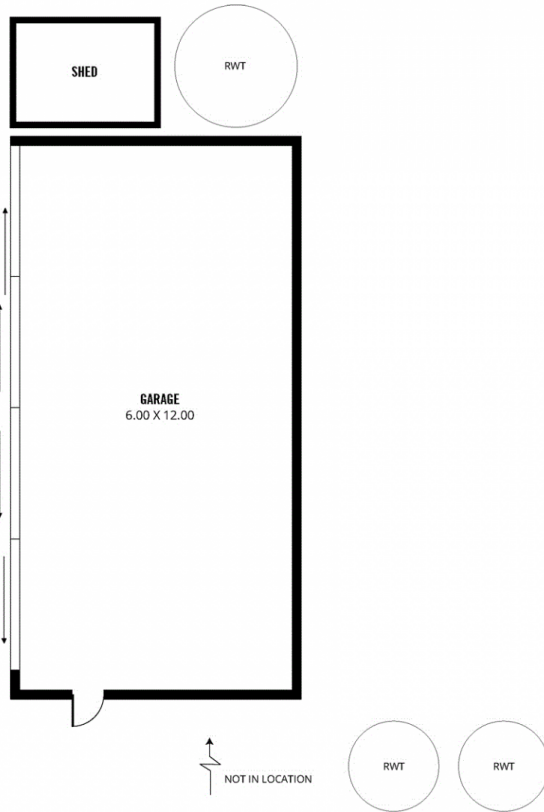
Comprising of four bedrooms including a master with en-suite and walk-in robe, two large living rooms and a stylish upgraded kitchen that overlooks the dining room. Soaring high raked ceilings and large picture windows provide a feeling of airiness and light, while being

Type : House
Land Size : 17800 sqm
View : <https://www.magain.com.au/property/20-tatiara-grove-rostrevor-sa/8435759>

[For full version visit the website](https://www.magain.com.au/property/20-tatiara-grove-rostrevor-sa/8435759)

<https://www.magain.com.au>
Magain Real Estate

457 Greenhill Road Tusmore SA
08 8332 1022



- 475m²

TOTAL
- 220m²

Living
- 72m²

Garage
- 38m²

Carport/Store
- 102m²

Outdoor Entertaining
- 43m²

Verandah

Scale in metres. This drawing is for illustration purposes only. All measurements are approximate and details intended to be relied upon should be independently verified.