

# MAGAIN



## 8 Thompson Court FERRYDEN PARK SA

4 2 2

Superbly positioned in a quiet cul-de-sac on a desirable corner allotment of approximately 486 square metres this immaculate home offers plenty of accommodation.

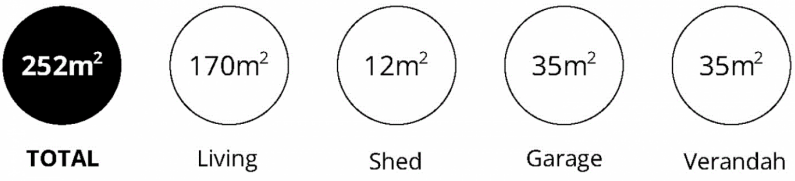
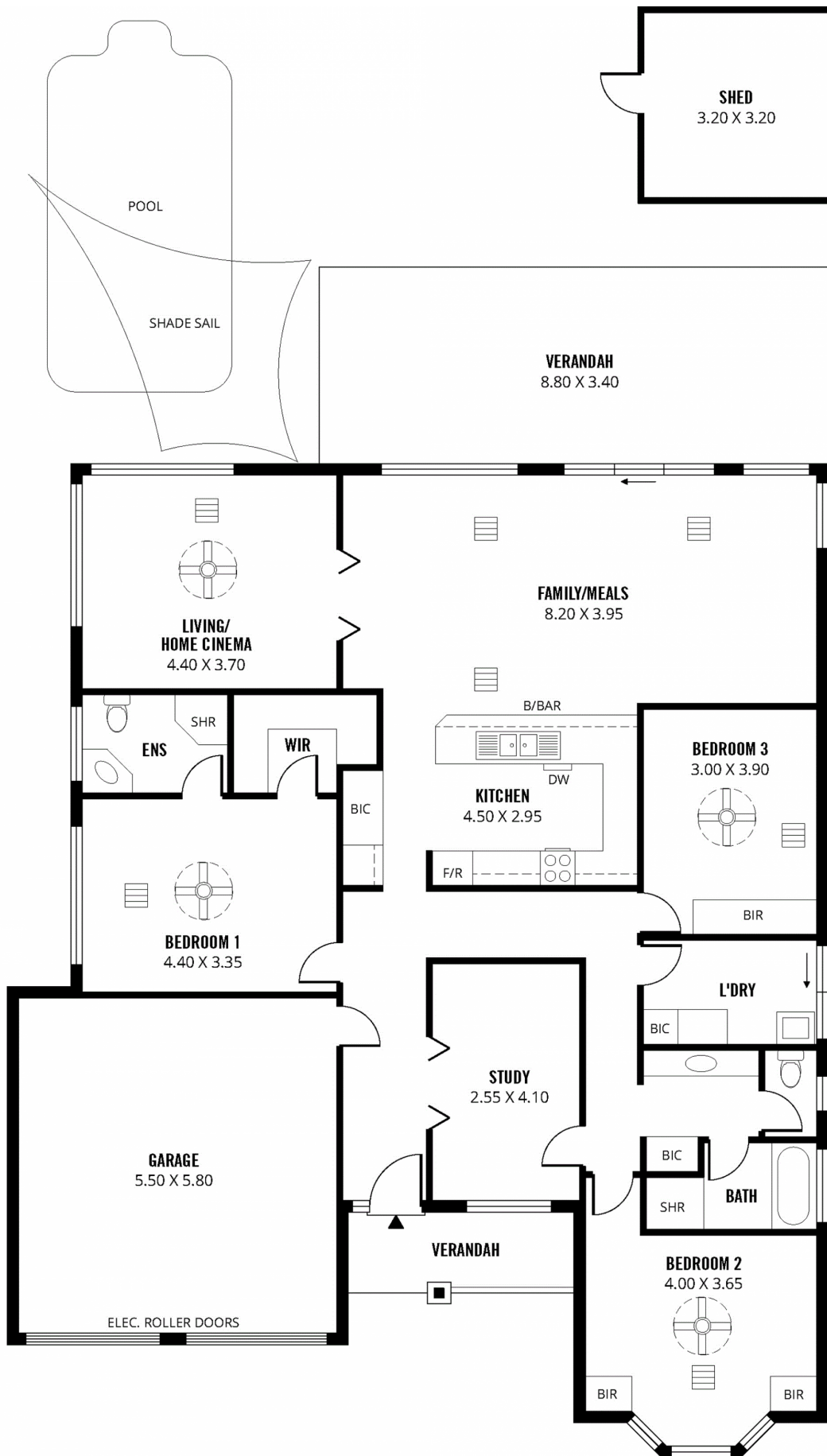
Comprising of a tiled entry, 3 good size bedrooms (all with built-in robes and ceiling fans) together with a home office or potential 4th bedroom, the master suite features a walk-in robe and ensuite bathroom, a generous open plan living and dining room that overlooks the outdoor entertaining area, a formal lounge (or ideal home theatre room), a large kitchen which features a stainless steel DeLonghi oven and a Smeg dishwasher, an appealing 3-way main bathroom and a separate laundry with built-ins and direct outside access. Other features include zoned ducted reverse cycle air-conditioning, a security system,

**Type** : House  
**Land Size** : 486 sqm  
**View** : <https://www.magain.com.au/property/8-thompson-court-ferryden-park-sa/8435761>

[For full version visit the website](https://www.magain.com.au)

<https://www.magain.com.au>  
Magain Real Estate

457 Greenhill Road Tusmore SA  
08 8332 1022



Scale in metres. This drawing is for illustration purposes only. All measurements are approximate and details intended to be relied upon should be independently verified. **Produced by The Fotobase Group**