

# MAGAIN



## 23A Holme Avenue LOWER MITCHAM SA

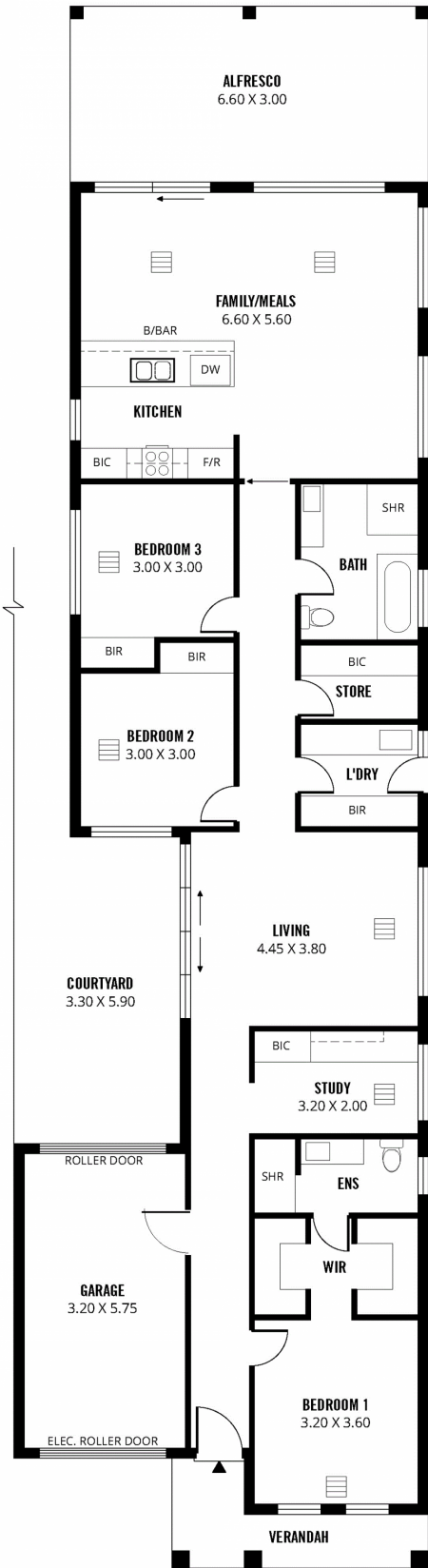
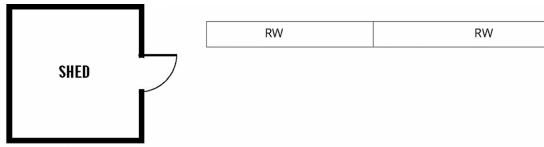
3  2  1 

A simple yet cleverly designed home built in 2015 with a floor plan that maximises every space. Beautifully presented throughout and immaculately maintained by the current owners, this is a very comfortable home that is packed full of features.

**Type** : House  
**Land Size** : 437 sqm  
**View** : <https://www.magain.com.au/property/23a-holme-avenue-lower-mitcham-sa/8435765>

A light and airy interior with 3 good size bedrooms including a roomy master suite with a his and her walk-through robe and an en-suite, bedrooms 2 and 3 both with built-in robes, a separate study with a built-in desk, shelves and storage cupboard, formal living in addition to a large open plan family room that opens upon an undercover alfresco entertaining area. A modern crisp white kitchen combined with Essa Stone bench-tops has a stainless steel Smeg gas cook-top/oven and a Fisher & Paykel dishwasher and

[For full version visit the website](https://www.magain.com.au)



Scale in metres. This drawing is for illustration purposes only. All measurements are approximate and details intended to be relied upon should be independently verified. Produced by The Fotobase Group