

MAGAIN



4-6 Wakefield Street KENT TOWN SA

17 🏠 9 🚗 10 🚗

Superbly located on a large allotment of approximately 969sqm with valuable frontage to both Wakefield and Little Angas Streets, this group of units is just a short stroll through the East Parklands to the CBD.

A total of 9 units comprising of 8 two bedroom units and 1 one bedroom unit, the majority with recent upgrades to kitchens, bathrooms and flooring, each with either a split system or ducted reverse cycle air-conditioning. All with allocated parking, 7 of which are undercover and with auto roller doors.

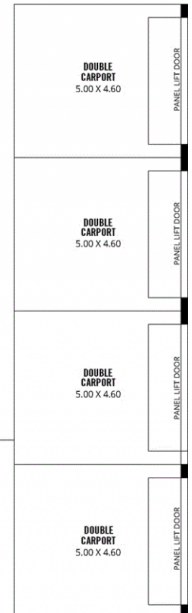
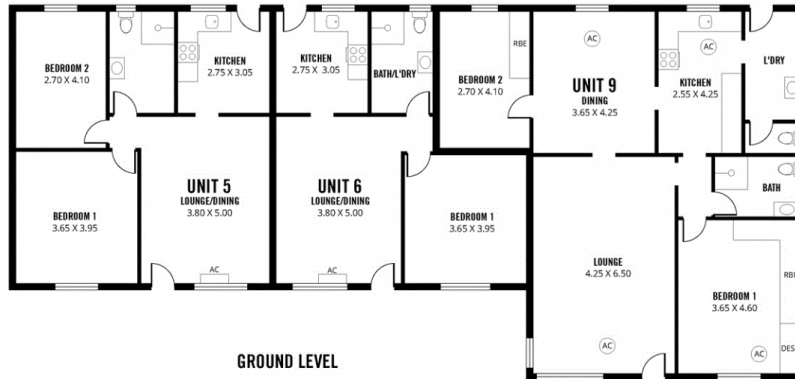
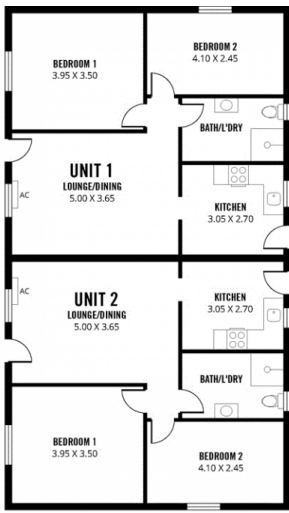
All 9 units are currently leased with an approximate total rental of \$130,000 per annum making this an ideal addition to your property portfolio.

[For full version visit the website](https://www.magain.com.au/property/46-wakefield-street-kent-town-sa/8435769)

Type : Block of Units
Land Size : 969 sqm
View : <https://www.magain.com.au/property/46-wakefield-street-kent-town-sa/8435769>

<https://www.magain.com.au>
Magain Real Estate

457 Greenhill Road Tusmore SA
08 8332 1022

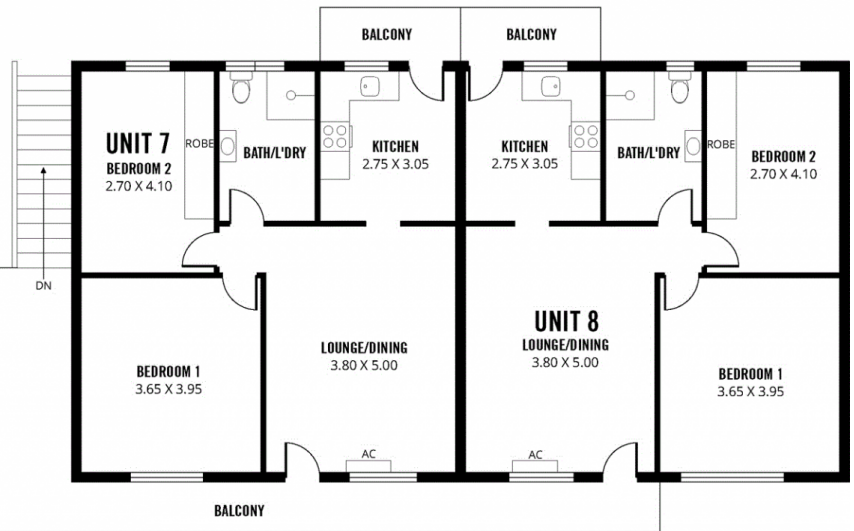
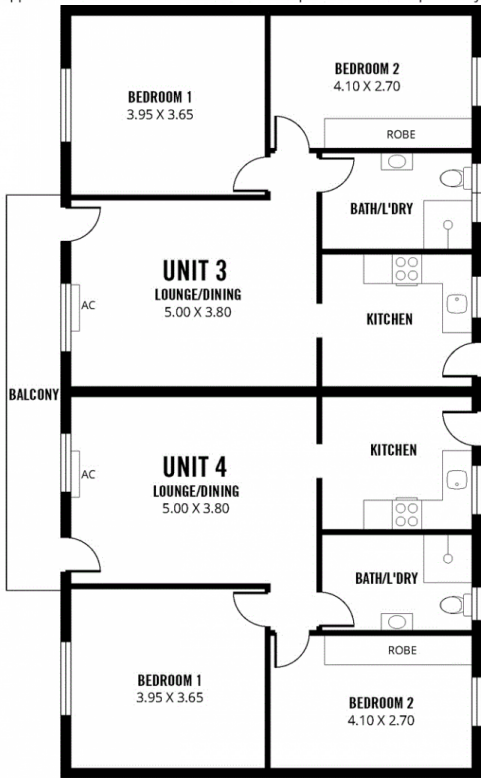


GROUND LEVEL

COURTYARD

Scale in metres. This drawing is for illustration purposes only. All measurements are approximate and details intended to be relied upon should be independently verified.

Produced by The Fotobase Group



UPPER LEVEL

Scale in metres. This drawing is for illustration purposes only. All measurements are approximate and details intended to be relied upon should be independently verified.

Produced by The Fotobase Group