




MAGAIN



130 Waterfall Gully Road WATERFALL GULLY SA

4  2  4 

Contact us to inspect by appointment

Beautifully positioned on 9,754sqm of land in this sought-after foothills sanctuary, this desirable home is located within the sought after Glenunga International High School zone and offers an amazing lifestyle complete with your very own nature reserve.

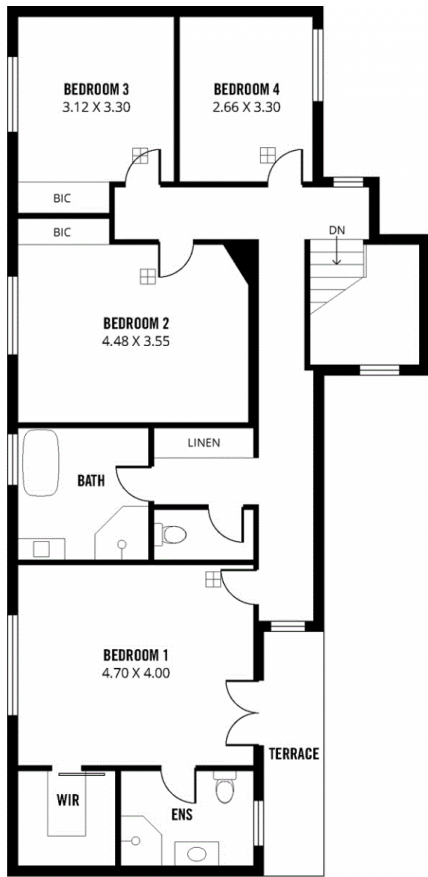
Type : House
Land Size : 9754 sqm
View : <https://www.magain.com.au/property/130-waterfall-gully-road-waterfall-gully-sa/8435780>

The home has a wonderful outlook over a rambling creek and is surrounded by attractive gardens. You'll find a generous floor plan that includes 4 good size bedrooms including the master suite (with a walk-in robe and ensuite) complimented by French doors that provide access to a private balcony with a picturesque scenic view. 3 living rooms provide a flexible layout that integrates well with the

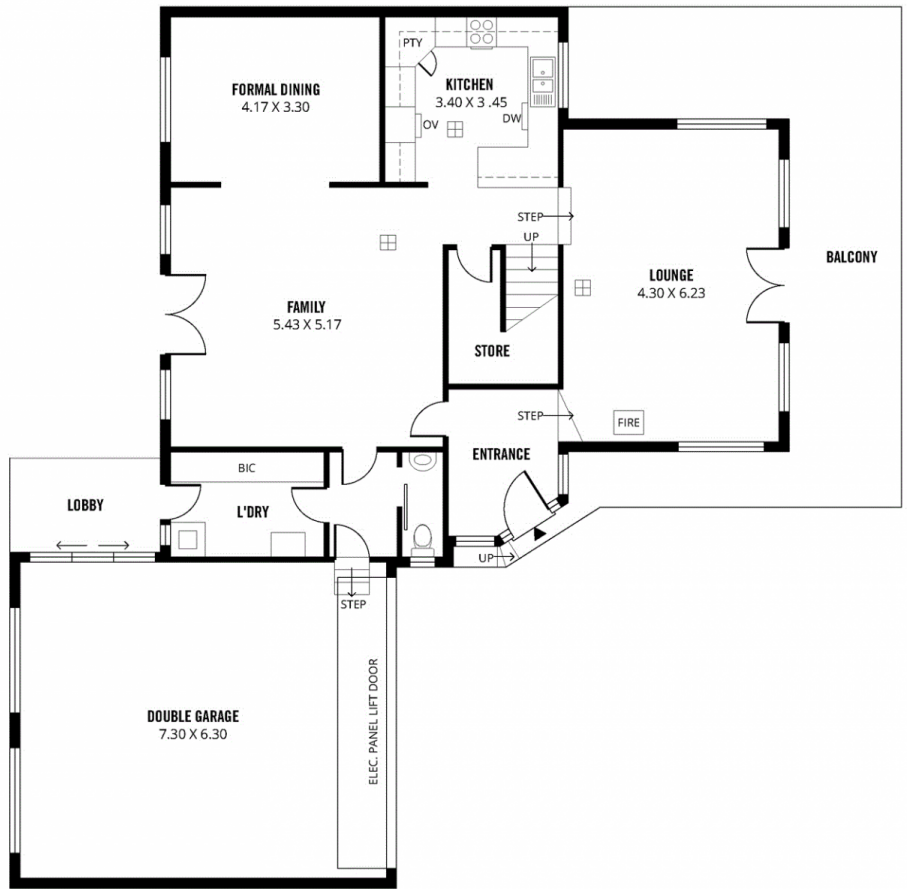
[For full version visit the website](https://www.magain.com.au)

<https://www.magain.com.au>
Magain Real Estate

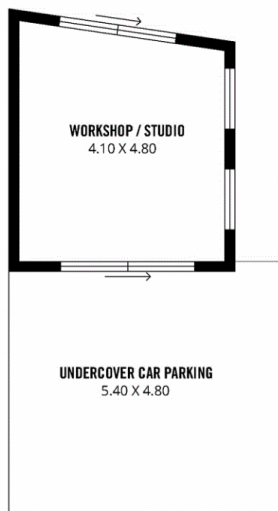
457 Greenhill Road Tusmore SA
08 8332 1022



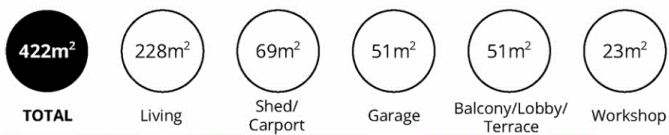
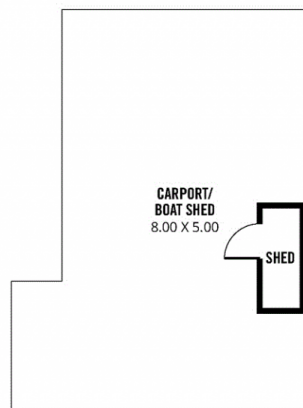
UPPER FLOOR



GROUND FLOOR



LOWER FLOOR



Scale in metres. This drawing is for illustration purposes only. All measurements are approximate and details intended to be relied upon should be independently verified.