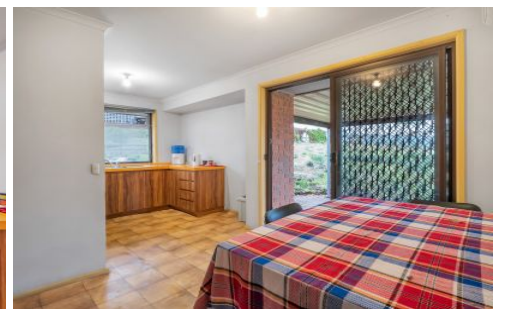


# MAGAIN



## 54 French Crescent TROTT PARK SA

3  1 

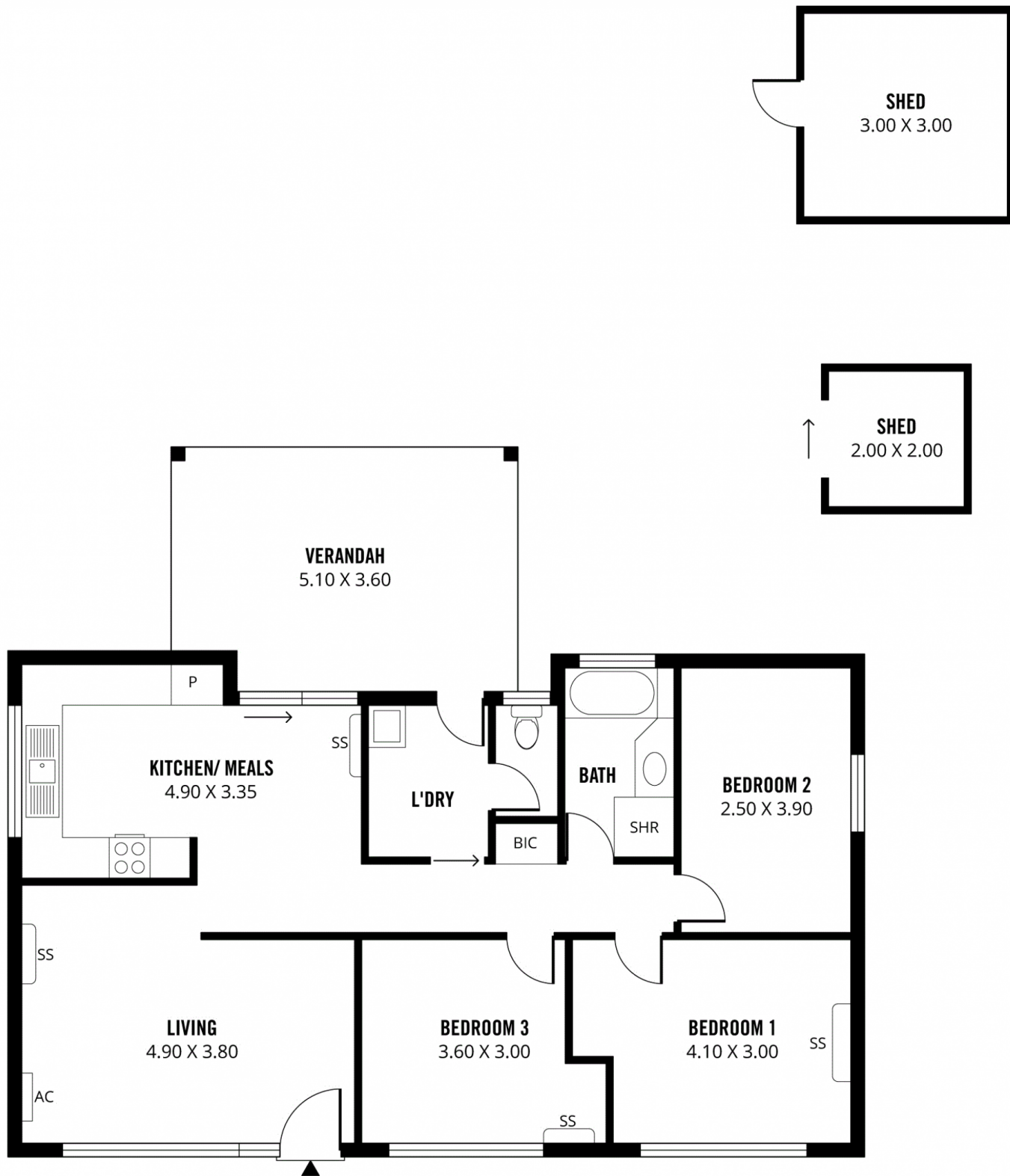
You'll need to be quick to snap up this affordable and convenient home within the ever-popular southern suburb of Trott Park.

Adelaide's CBD is easy-to-reach from this location using the Southern Expressway or take a train from the Hallett Cove Beach Railway Station. While a bus can be caught from the local bus stop that is just a stroll away. Shopping is a breeze at either the local IGA or Westfield Marion and the Noarlunga Centre (both with a travelling time of approximately 12 to 13 minutes by car).

Plenty of potential exists for you to add your decorating style and improvements to create a comfortable home. Alternatively, there's an opportunity to re-build on the site

**Type** : House  
**Land Size** : 704 sqm  
**View** : <https://www.magain.com.au/property/54-french-crescent-trott-park-sa/8435783>

[For full version visit the website](https://www.magain.com.au/property/54-french-crescent-trott-park-sa/8435783)



**124m<sup>2</sup>**

**TOTAL**

91m<sup>2</sup>

Living

15m<sup>2</sup>

Shed

18m<sup>2</sup>

Verandah

Scale in metres. This drawing is for illustration purposes only. All measurements are approximate and details intended to be relied upon should be independently verified. Produced by **The Fotobase Group**