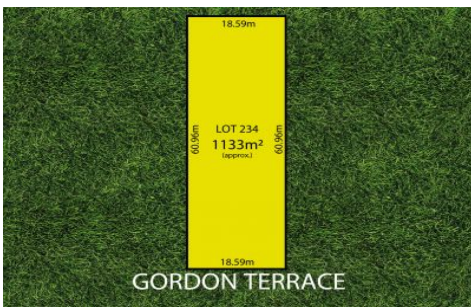


MAGAIN



42 Gordon Terrace ROSSLYN PARK SA

3 1 2

Offers Now Closing Thursday, 10th December at 5pm - Final Open Inspection Tuesday, 8/12 at 6:30 - 7pm

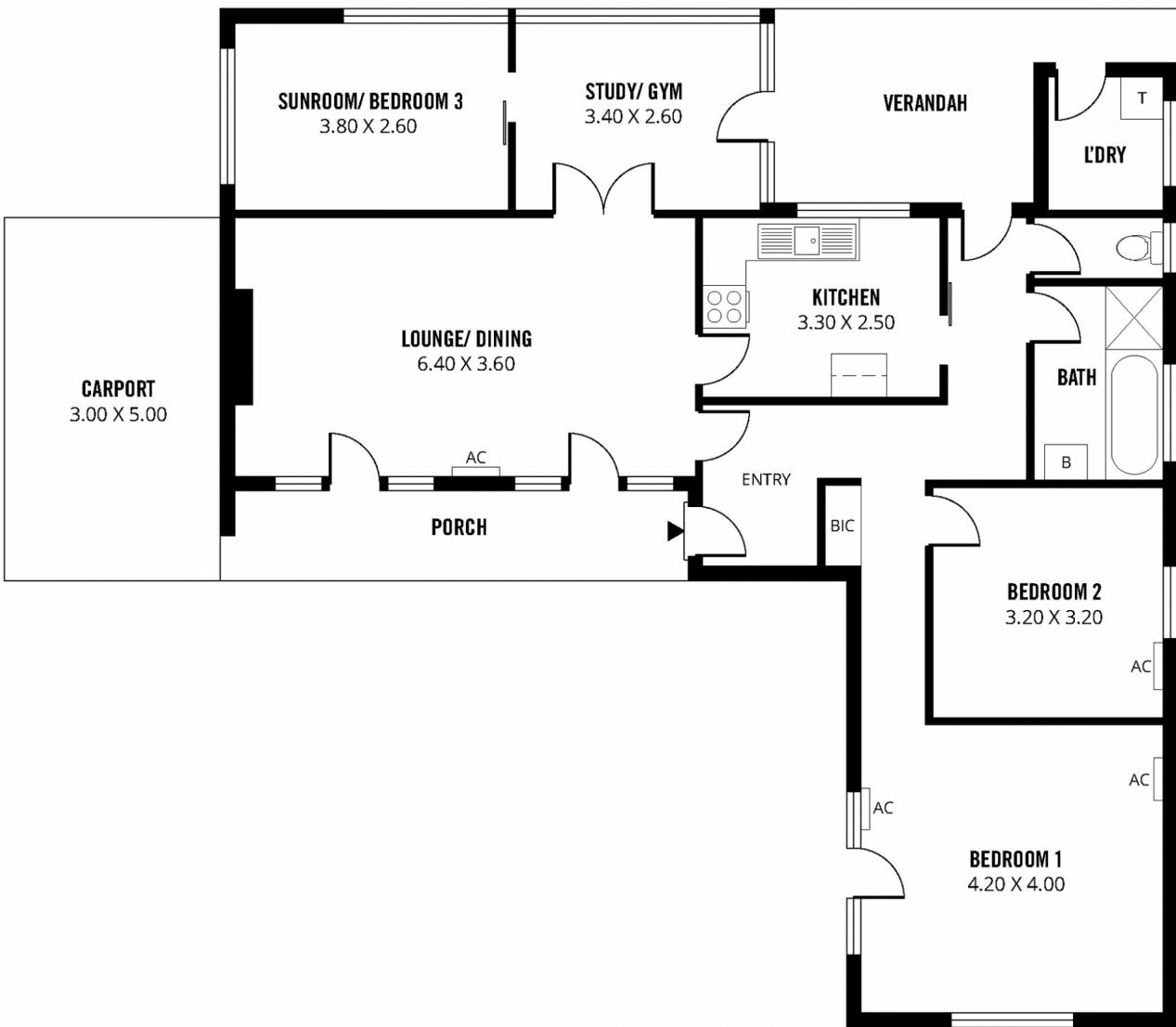
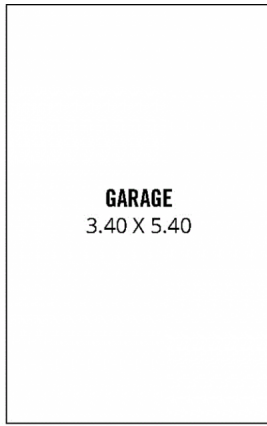
Superbly located in sought after Rosslyn Park, this original 1960's home is situated on a huge block of approximately 1,133 square metres.

Offering the potential to build to your desired taste and design, or renovate and extend the existing home subject to the necessary consents.

The property comprises of a formal entry, a spacious living room with an open fire, 2 to 3 bedrooms depending on your requirements, a dine-in kitchen, an original bathroom with a shower and a full bath, a separate laundry and a sunroom

[For full version visit the website](https://www.magain.com.au/property/42-gordon-terrace-rosslyn-park-sa/8435800)

Type : House
Land Size : 1133 sqm
View : <https://www.magain.com.au/property/42-gordon-terrace-rosslyn-park-sa/8435800>



167m²

TOTAL

115m²

Living

15m²

Carport

18m²

Garage

8m²

Porch

11m²

Verandah