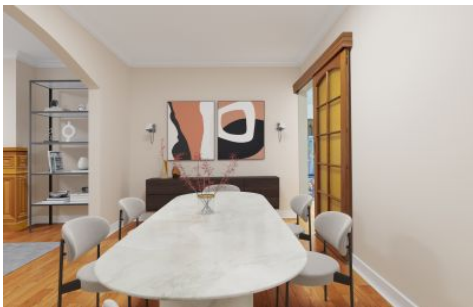


MAGAIN



Unit 2/58 East Terrace KENSINGTON GARDENS SA

2  1  1 

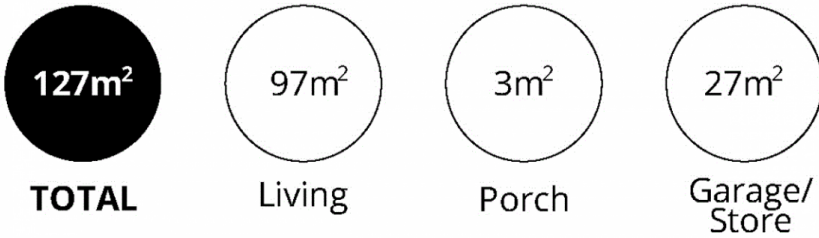
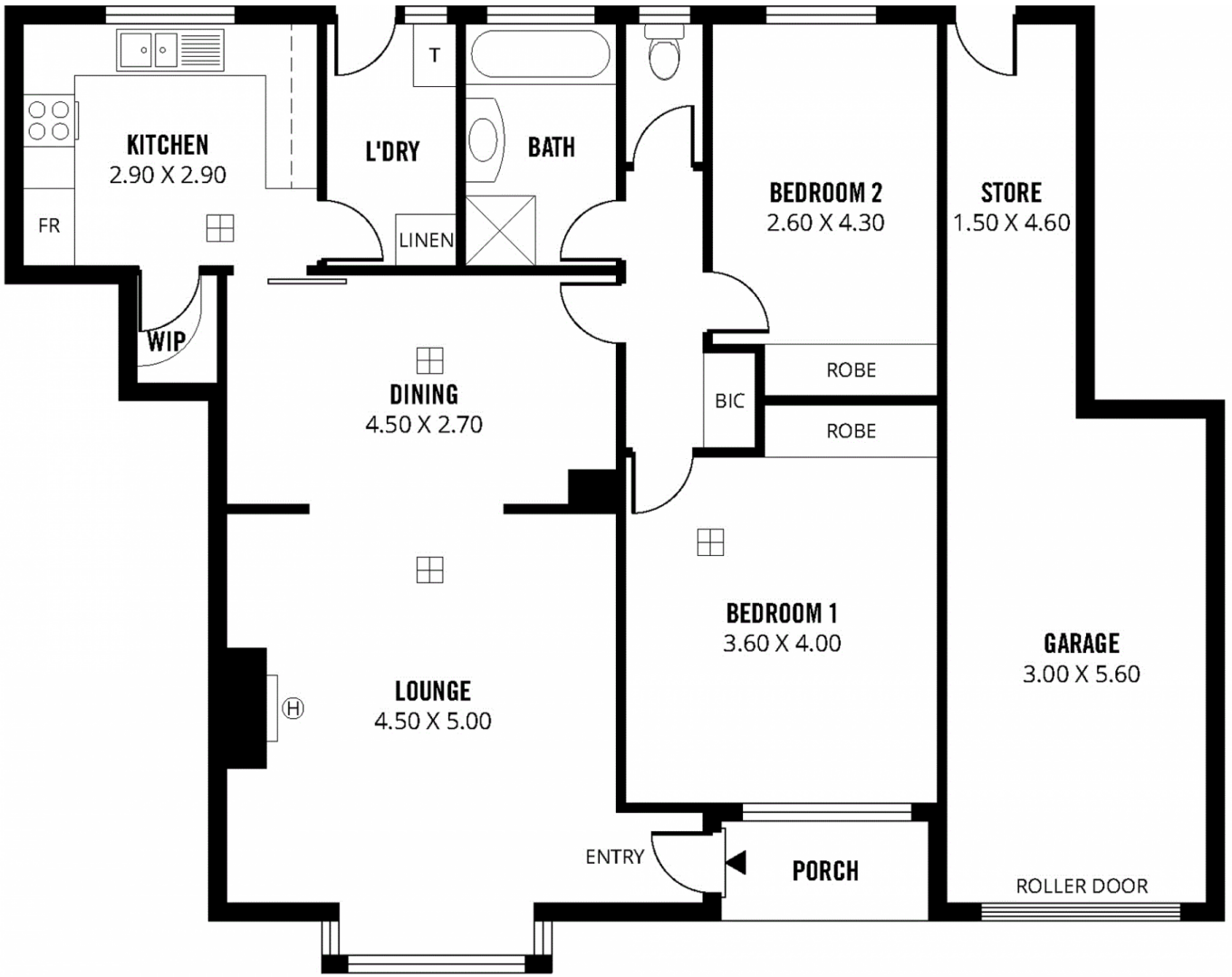
Superbly located just a short stroll from the reserve and popular Erindale Shopping Village, this spacious single storey colonial style home unit provides a rare opportunity in this sought-after suburb.

With a roomy lounge and an adjacent formal dining room there is plenty of open plan living space, both bedrooms have built-in robes and the upgraded kitchen features a large walk-in pantry. The renovated bathroom has a full bath while the separate laundry and toilet have also been upgraded. Other features include attractive polished timber floorboards throughout and ducted air-conditioning.

Outside there is a generously proportioned, fully enclosed rear courtyard that is perfect for outdoor entertaining and a

[For full version visit the website](#)

Type : Unit
View : <https://www.magain.com.au/property/unit-258-east-terrace-kensington-gardens-sa/8435817>



Scale in metres. This drawing is for illustration purposes only. All measurements are approximate and details intended to be relied upon should be independently verified. Produced by **The Fotobase Group**