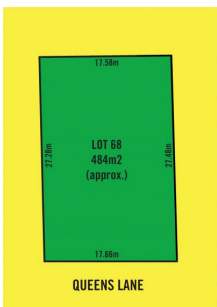





MAGAIN



11 Queens Lane GLEN OSMOND SA

3  1  2 

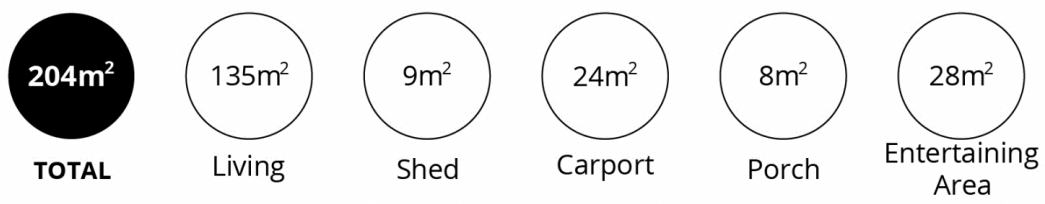
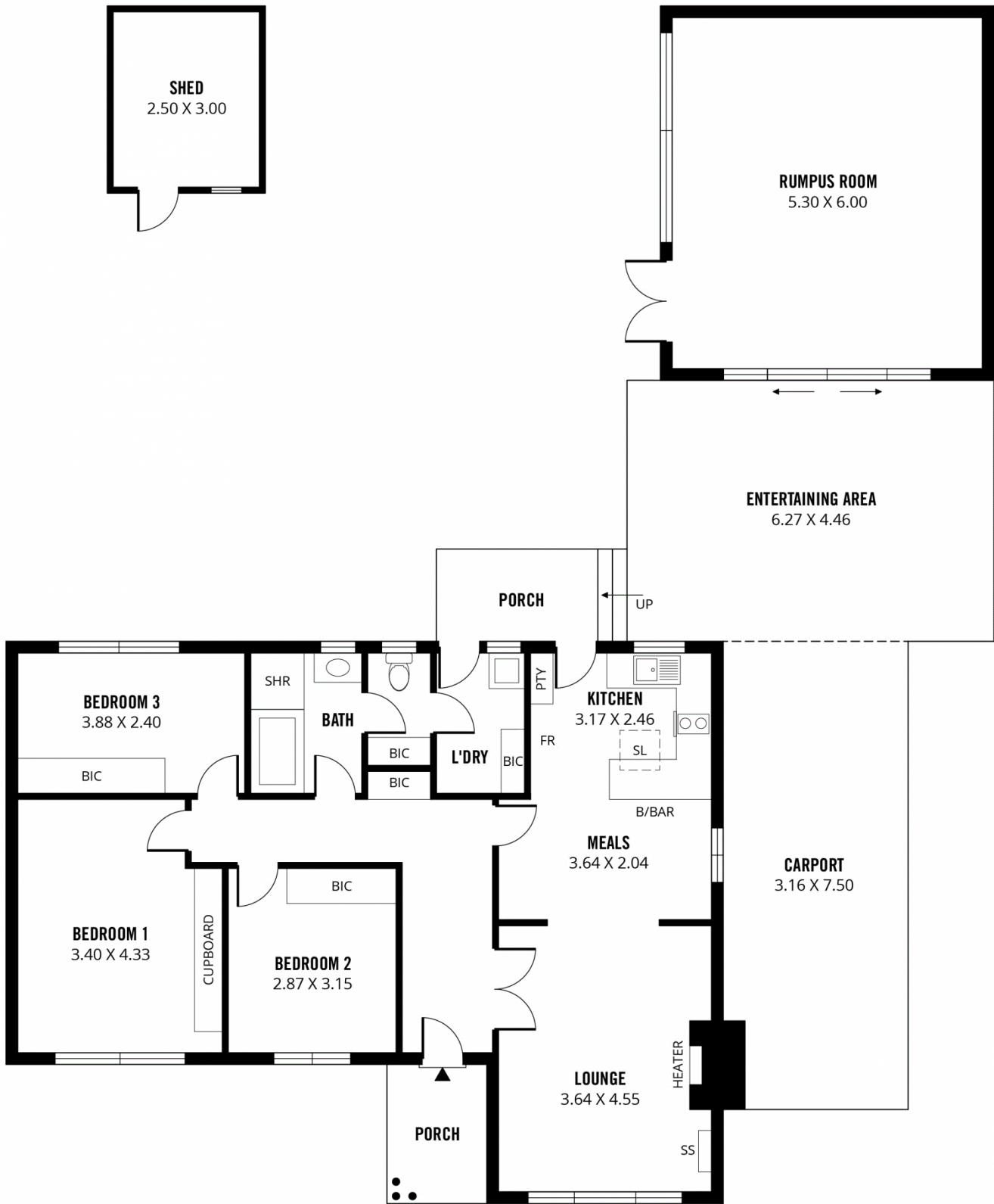
Surrounded by such great schools and within easy reach of the City, we have no doubt this property will be high in the popularity stakes. You'll be spoilt for choice with the close proximity of Seymour College, together with Linden Park Primary School and Glenunga International High School zoning.

This neatly presented home provides a comfortable lifestyle in a great location at an affordable level, while presenting the new owners with an option to renovate and or extend, re-build to suit their own requirements (subject to the necessary consents) or as a valuable addition to their investment portfolio. The land is approximately 484sqm in size being approximately 17m at the front and approximately 27m deep and overlooks the adjacent

Type : House

View : <https://www.magain.com.au/property/11-queens-lane-glen-osmond-sa/8435852>

[For full version visit the website](https://www.magain.com.au)



Scale in metres. This drawing is for illustration purposes only. All measurements are approximate and details intended to be relied upon should be independently verified.

Produced by **The Fotobase Group**