

# MAGAIN



412 Glynburn Road ERINDALE SA

4 1 2

This comfortable and easy-to-live-in home with a flexible floor plan and character features throughout is set well back from the road and privately sited behind a private, high fence. The premium eastern suburb location is close to excellent public and private schools, excellent local shopping, picturesque parks and reserves and within 5kms of the Adelaide CBD.

**Type** : House

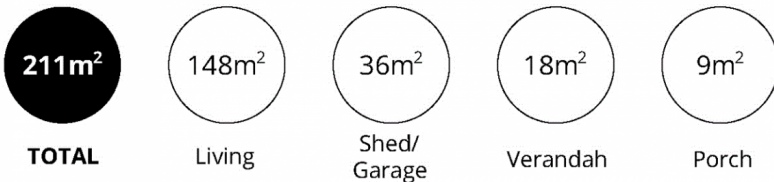
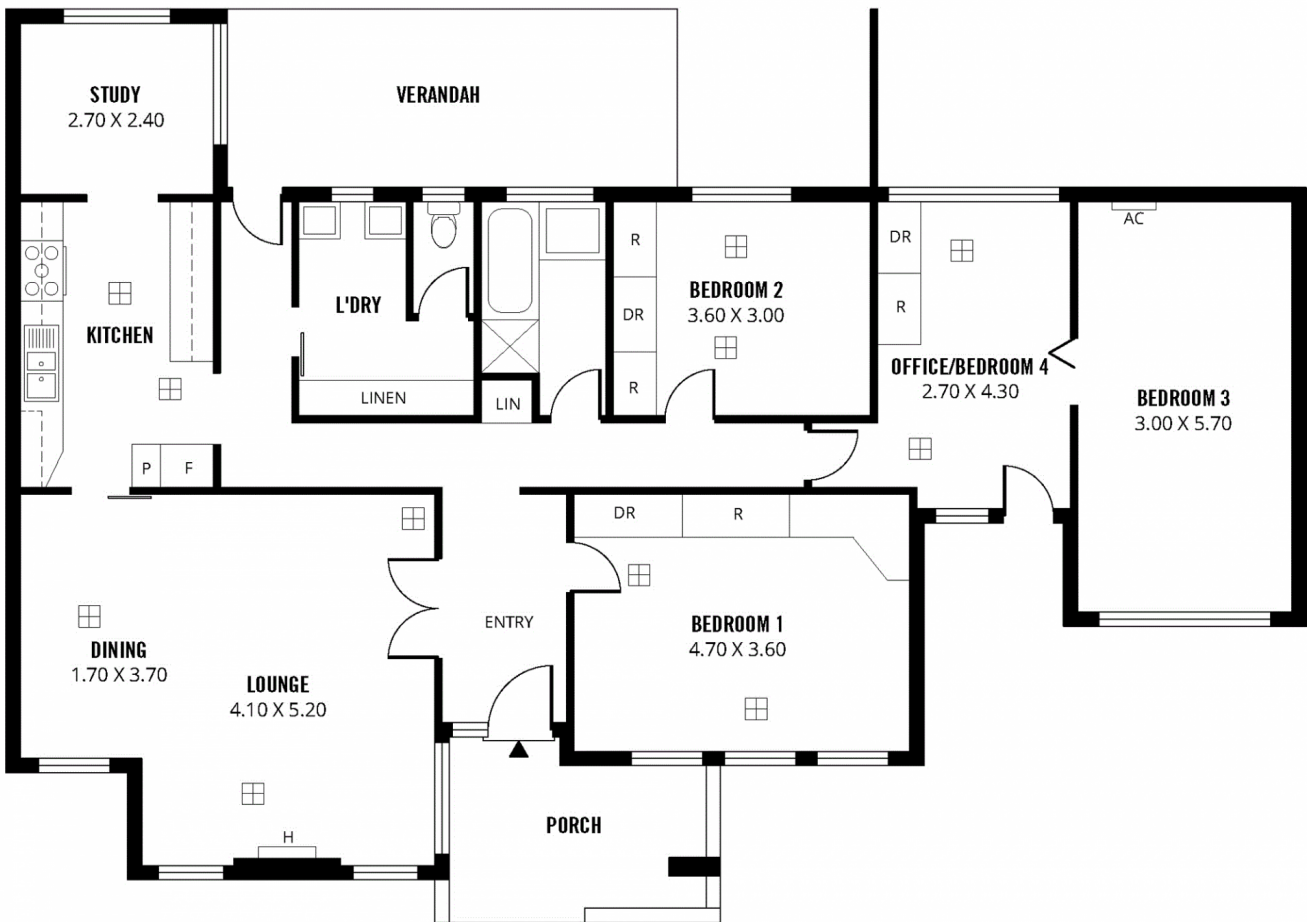
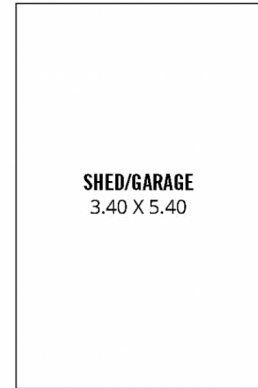
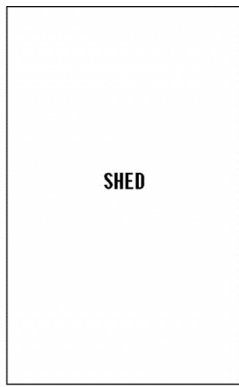
**View** : <https://www.magain.com.au/property/412-glynburn-road-erindale-sa/8435854>

Comprising of an elegant formal entry, a roomy lounge and dining area, up-to four bedrooms together with a study (the fourth bedroom with separate front door access has the potential to become a convenient work from home office), an updated kitchen with stainless steel appliances, an attractive bathroom with a full bath, a separate toilet and separate laundry.

[For full version visit the website](#)

<https://www.magain.com.au>  
Magain Real Estate

457 Greenhill Road Tusmore SA  
08 8332 1022



Scale in metres. This drawing is for illustration purposes only. All measurements are approximate and details intended to be relied upon should be independently verified.

Produced by **The Fotobase Group**

22.86m

**989m<sup>2</sup>**  
(approx)

43.28m

43.28m

22.86m

**GLYNBURN ROAD**