

# MAGAIN



26 Harris Road VALE PARK SA

3 1 2

Versatility is the word which best describes this well-located Vale Park property with an approximate 18.30m frontage, a depth of approximately 40.23m and totals some 736sqm.

**Type** : House  
**Land Size** : 736 sqm  
**View** : <https://www.magain.com.au/property/26-harris-road-vale-park-sa/8435857>

The choice is yours to either upgrade, re-develop (subject to consents) or add this property to your current investment portfolio. Alternatively, you can create your own happy family memories while living in this home, just as the current owners have done.

The home which is sited behind a recently erected timber fence and driveway gate comprises of three well-proportioned bedrooms, a north facing lounge room, an upgraded kitchen with a servery that overlooks the

[For full version visit the website](https://www.magain.com.au)

<https://www.magain.com.au>  
Magain Real Estate

457 Greenhill Road Tusmore SA  
08 8332 1022



18.30m

**LOT 6**

**736m<sup>2</sup>**

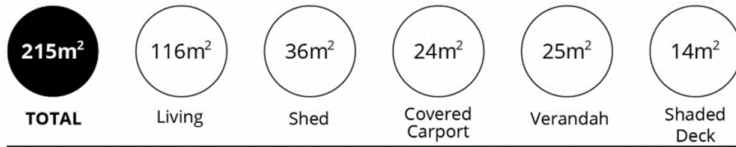
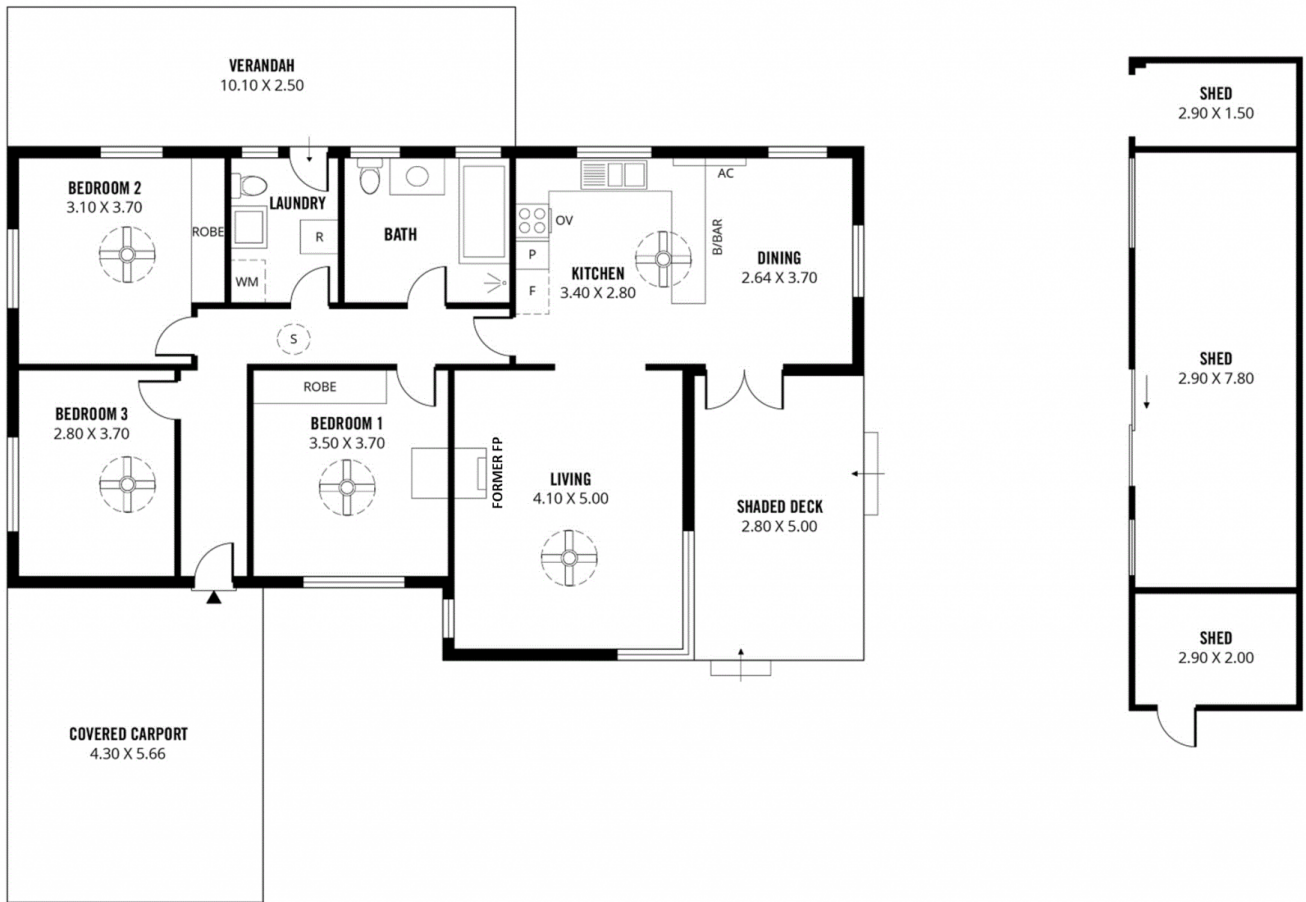
(approx.)

40.23m

40.23m

18.30m

**HARRIS ROAD**



Scale in metres. This drawing is for illustration purposes only. All measurements are approximate and details intended to be relied upon should be independently verified.

Produced by The Fotobase Group