

MAGAIN



21 Ebenezer Place GUMERACHA SA

3  2  2 

Located in Gumerachas prestigious Kenton Hill Estate, this beautiful, large family home is a must see. Situated only 20 minutes drive from Tea Tree Plaza, this property offers the best of both worlds; being close enough to the CBD yet offering a relaxed country lifestyle.

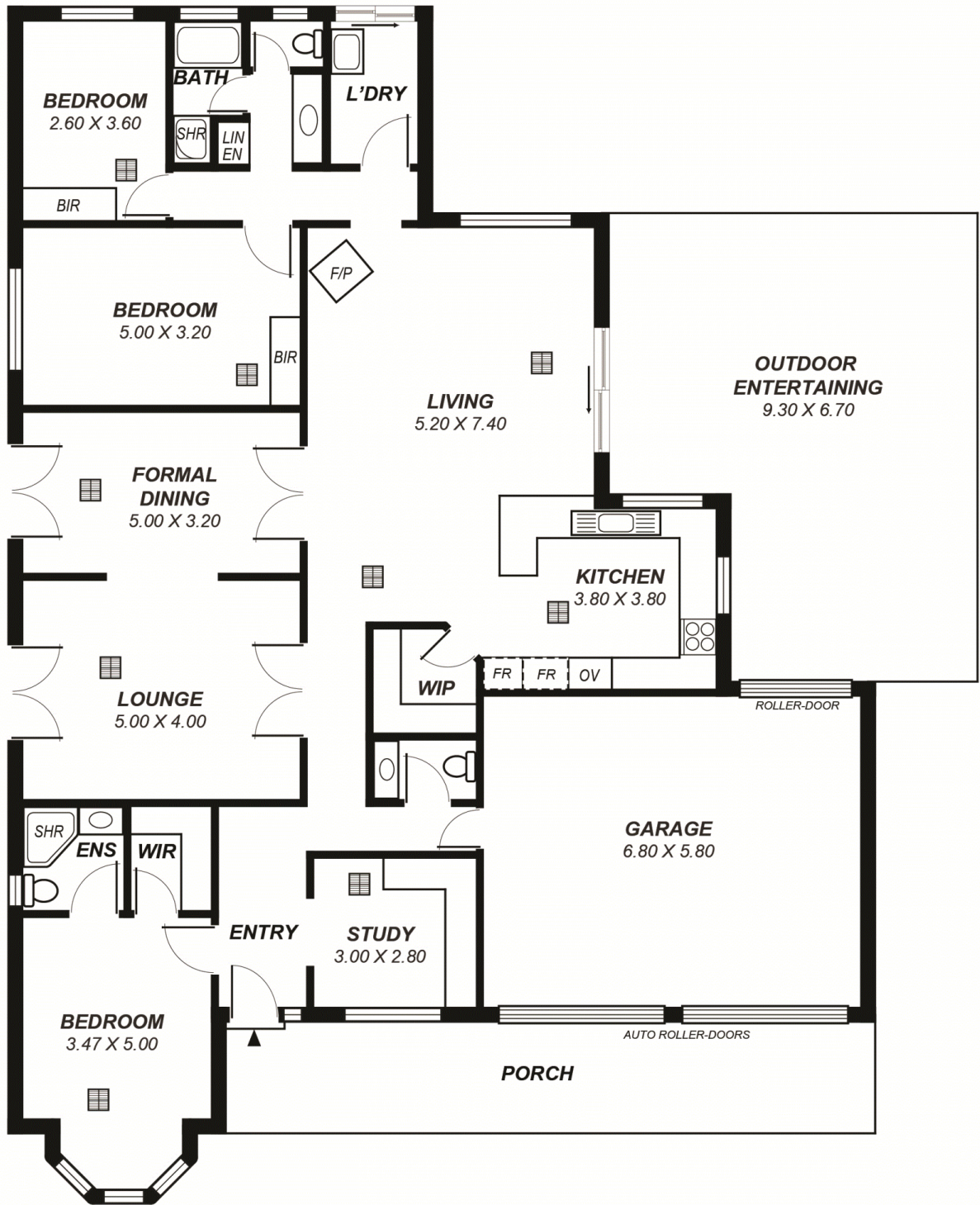
Built on a generous 813sqm allotment, the home is beautifully kept with big open plan living areas that lead to a generous outdoor pergola, where you can sit and enjoy the blend of indoor/outdoor living.

The home offers three good size bedrooms and a study with built in desk and cabinetry. Bedrooms two and three are complete with built in robes and both are well sized to accommodate a queen size bed. The master bedroom

Type : House
Land Size : 813 sqm
View : <https://www.magain.com.au/property/21-ebenezer-place-gumeracha-sa/8435874>

[For full version visit the website](https://www.magain.com.au/property/21-ebenezer-place-gumeracha-sa/8435874)

RWT



Area	m ²
Living:	179.71
Porch:	24.38
Garage:	39.44
Outdoor:	62.31
Total:	305.84