




MAGAIN



50 Allendale Grove STONYFELL SA

4  2  2 

Outstanding 2 storey family home just 2 years young with stunning swimming pool and fantastic views!

Impressive in every way this immaculately presented home is as new with high quality features throughout. North facing on a good size corner allotment of approximately 729 square metres the property is perfectly positioned to take advantage of the sensational outlook.

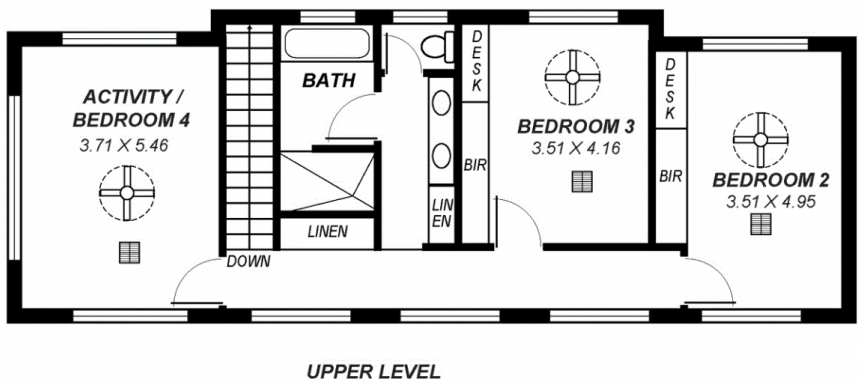
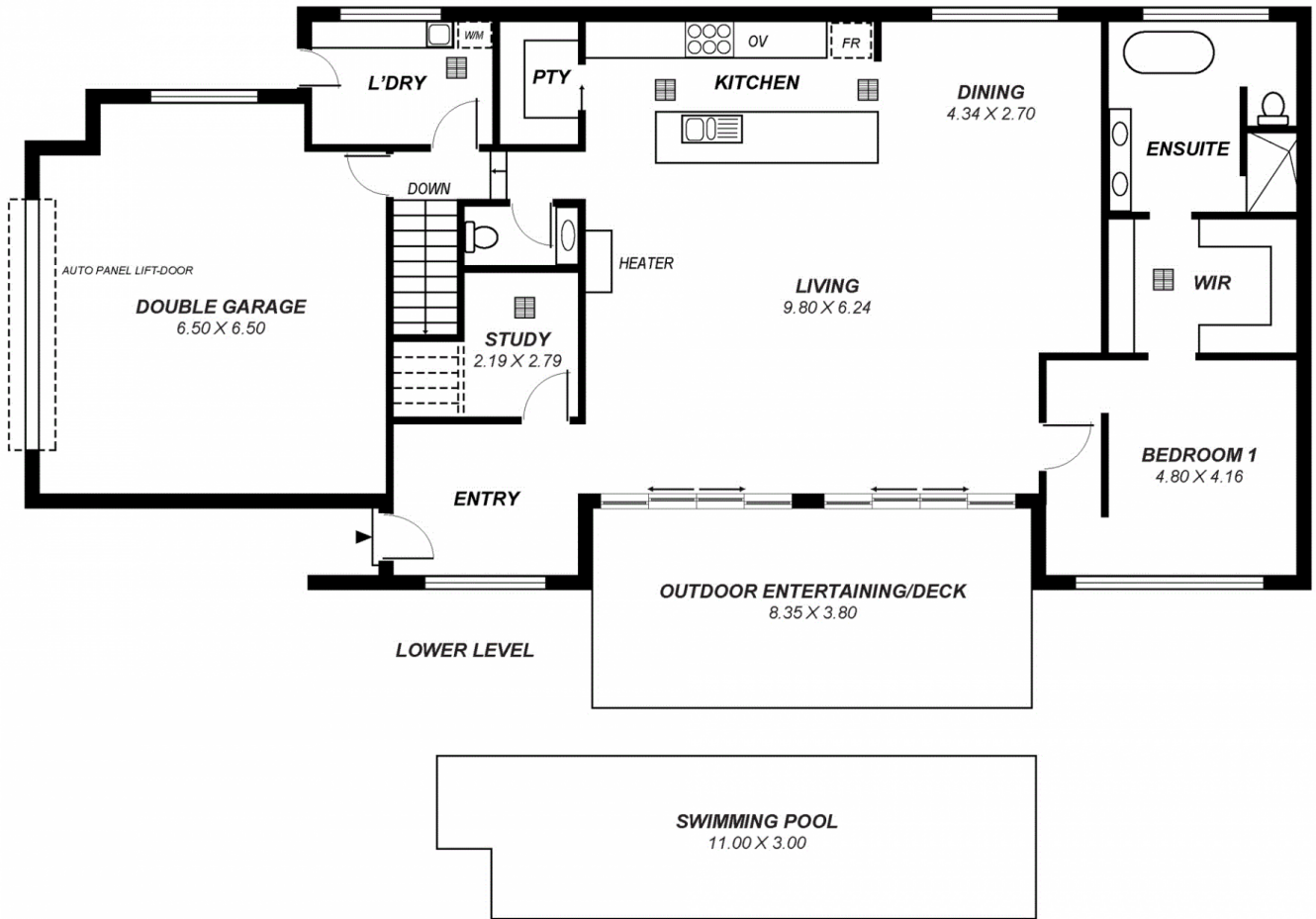
Comprising up to 4 double bedrooms plus a study including a spacious master suite with a large fitted walk in robe and stylish ensuite, massive open plan living and dining room with feature gas fireplace and appealing spotted gum timber flooring opening onto the patio deck and pool area, beautifully finished kitchen including two Smeg stainless

Type : House
Land Size : 729 sqm
View : <https://www.magain.com.au/property/50-allendale-grove-stonyfell-sa/8435881>

[For full version visit the website](https://www.magain.com.au)

<https://www.magain.com.au>
Magain Real Estate

457 Greenhill Road Tusmore SA
08 8332 1022



*This drawing is for illustration purposes only .
 All measurements are approximate and details intended
 to be relied upon should be independently verified.*

Area	m ²
Lower Living:	81.42
Upper Living:	172.17
Garage:	42.25
Pool:	33.00
Deck:	31.73
Total:	361.57