

# MAGAIN



20 Wurinya Avenue STONYFELL SA

5 🛏 3 🚿 2 🚗

Beautifully presented this desirable home offers a very flexible floor plan with generous accommodation throughout. Superbly positioned in sought after Stonyfell the property offers outstanding views and is perfect for the larger family.

**Type** : House  
**Land Size** : 785 sqm  
**View** : <https://www.magain.com.au/property/20-wurinya-avenue-stonyfell-sa/8435884>

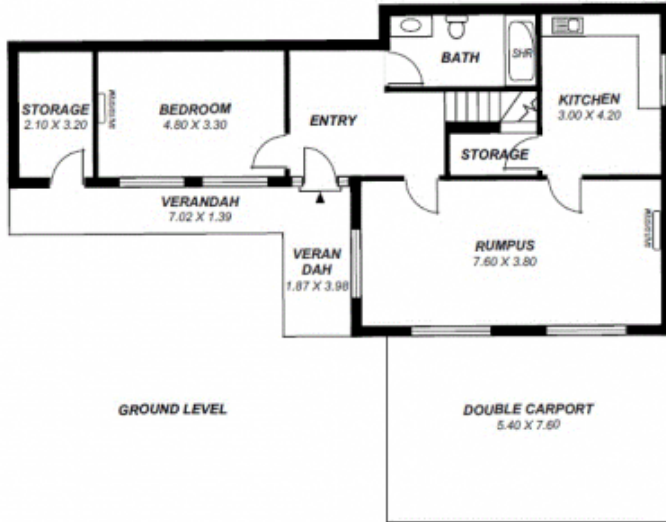
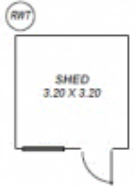
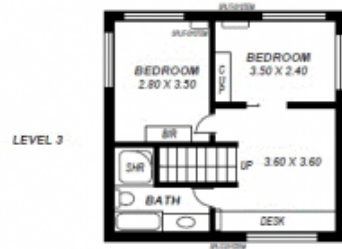
The ground floor offers a large formal entrance, ideal double guest bedroom with split system air conditioning, recently upgraded, fully tiled bathroom, spacious living room or theatre room with adjacent kitchenette providing an excellent space for a teenagers retreat or extended family.

The first floor is the main floor of the home providing outstanding open plan living and dining with Bose sound system leading to the exceptional balcony verandah.

[For full version visit the website](https://www.magain.com.au)

<https://www.magain.com.au>  
Magain Real Estate

457 Greenhill Road Tusmore SA  
08 8332 1022



*This drawing is for illustration purposes only .  
All measurements are approximate and details intended  
to be relied upon should be independently verified.*

Area	m <sup>2</sup>
Ground Living:	97.35
2 Living:	132.05
2 Living:	40.04
Balcony:	40.04
Double Carport:	41.04
Verandah:	17.2
Shed:	10.24
Deck:	05.24
<b>Total:</b>	<b>384.10</b>