




MAGAIN



53 Norseman Avenue WESTBOURNE PARK SA

5  2  2 

Magnificent family home of grand proportions over 2 levels with a flexible floor plan offering multiple living areas and up to 5 bedrooms plus a study. Boasting high quality fixtures and fittings throughout even the most discerning buyer will be impressed!

Type : House
Land Size : 894 sqm
View : <https://www.magain.com.au/property/53-norseman-avenue-westbourne-park-sa/8435886>

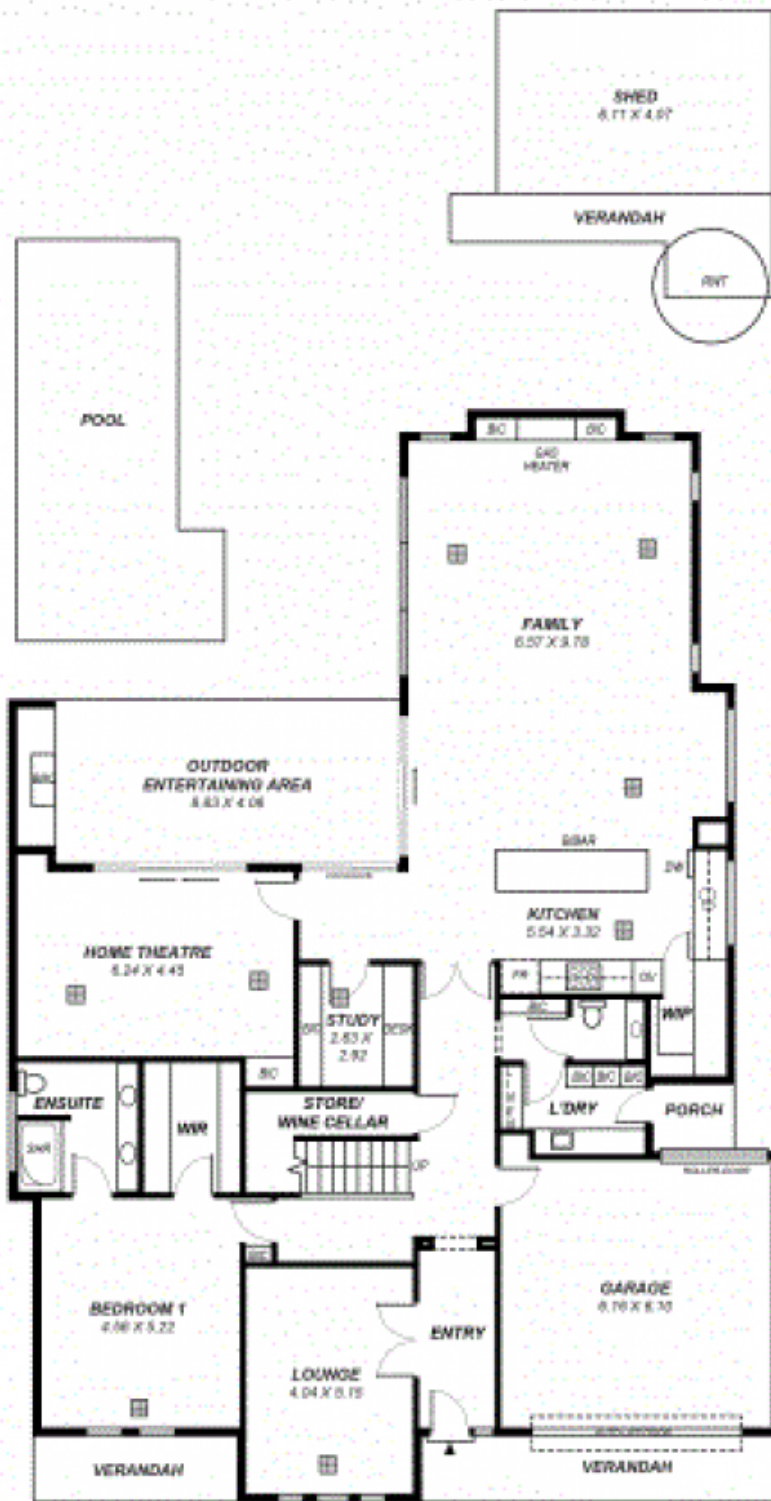
Some of the many fantastic features include:

- Huge master suite with stylish, fully tiled ensuite & large fitted walk in robe.
- Generous size 2nd, 3rd and 4th bedrooms all with built in robes.
- Formal sitting room or guest bedroom.

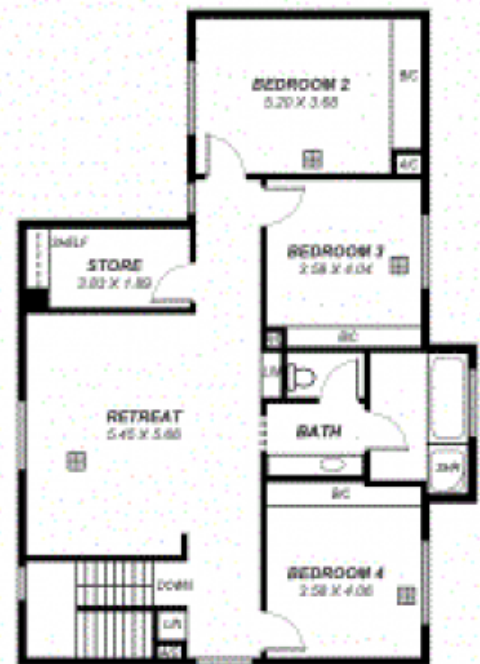
[For full version visit the website](https://www.magain.com.au)

<https://www.magain.com.au>
Magain Real Estate

457 Greenhill Road Tusmore SA
08 8332 1022



GROUND FLOOR



FIRST FLOOR

This drawing is for illustration purposes only.
 All measurements are approximate and details intended
 to be relied upon should be independently verified.

Area	m ²
Ground Living	274
First Living	130
Garage	42
Verandah	19
Entertaining	36
Shed	37
Total	529