

# MAGAIN



## 30 Melaleuca Drive ATHELSTONE SA

4  2  1 

Superbly positioned overlooking Wadmore Reserve this outstanding home offers a flexible floor plan with plenty of space for the larger or growing family.

Comprising a tiled formal entrance, 4 bedrooms (3 with robes), large living room as well as a spacious open plan family/dining room, stunning, upgraded kitchen with stainless steel appliances including a dishwasher, stylishly renovated ensuite and main bathroom and a large separate laundry with plenty of built in cupboards. Other features include ducted reverse cycle air conditioning, new flooring, roller shutters and a large store room.

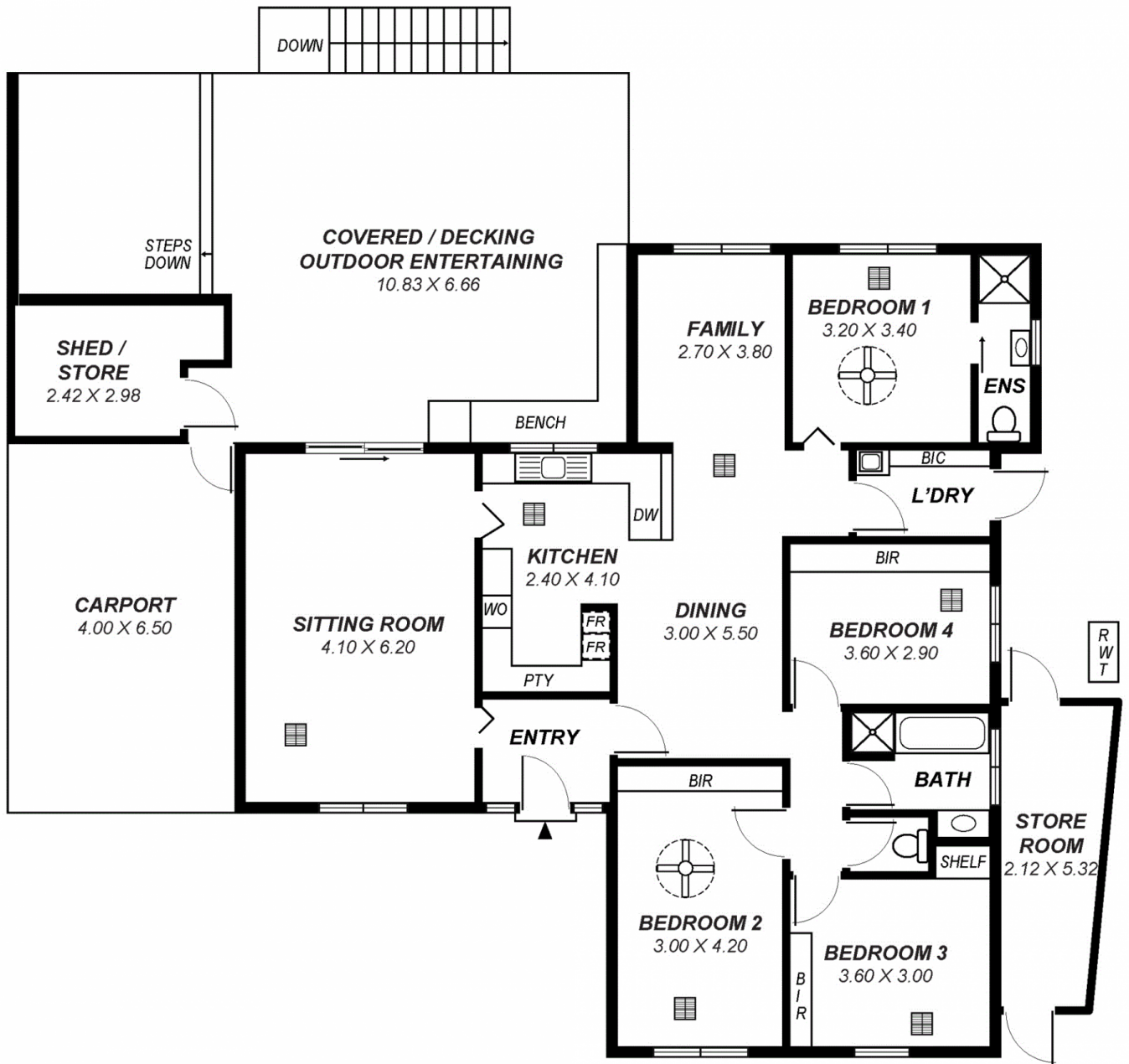
Outside the home features an amazing outdoor entertaining area with a huge 2 level undercover timber

[For full version visit the website](https://www.magain.com.au/property/30-melaleuca-drive-athelstone-sa/8435898)

**Type** : House  
**Land Size** : 640 sqm  
**View** : <https://www.magain.com.au/property/30-melaleuca-drive-athelstone-sa/8435898>

<https://www.magain.com.au>  
Magain Real Estate

457 Greenhill Road Tusmore SA  
08 8332 1022



Area	m <sup>2</sup>
Living:	132.32
Carpport:	26.00
Covered:	72.13
Store:	11.28
Shed:	07.21
<b>Total:</b>	<b>228.94</b>

*This drawing is for illustration purposes only .  
 All measurements are approximate and details intended  
 to be relied upon should be independently verified.*