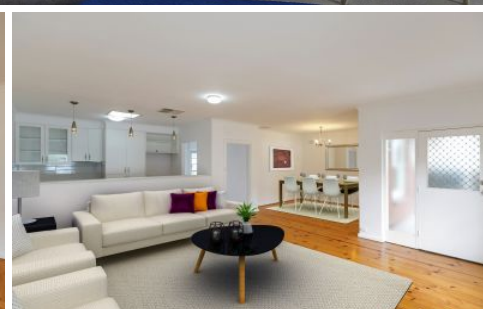


MAGAIN



Unit 6/31 Park Terrace GILBERTON SA

2  1  3 

Ideally located in the tightly held suburb of Gilberton, this unit is a cut above the rest. Tastefully renovated the unit features 2 bedrooms both with b.i.r, a fantastic sized open plan living area with polished hard wood floors, a separate dining area to the side of the home, full sized kitchen with Miele appliances being dishwasher, cook top and oven with ample bench and storage space, ducted evaporative cooling & gas heating. There is also a great sized bathroom with all the modern fixtures and separate laundry area.

The real stand out of this property is that it is situated on 200 sqm of land and has an enormous outdoor area which is fully fenced and completely secure. There is also a pergola which adjoins the car port and is a fabulous area in which you can set up some outdoor furniture an outdoor

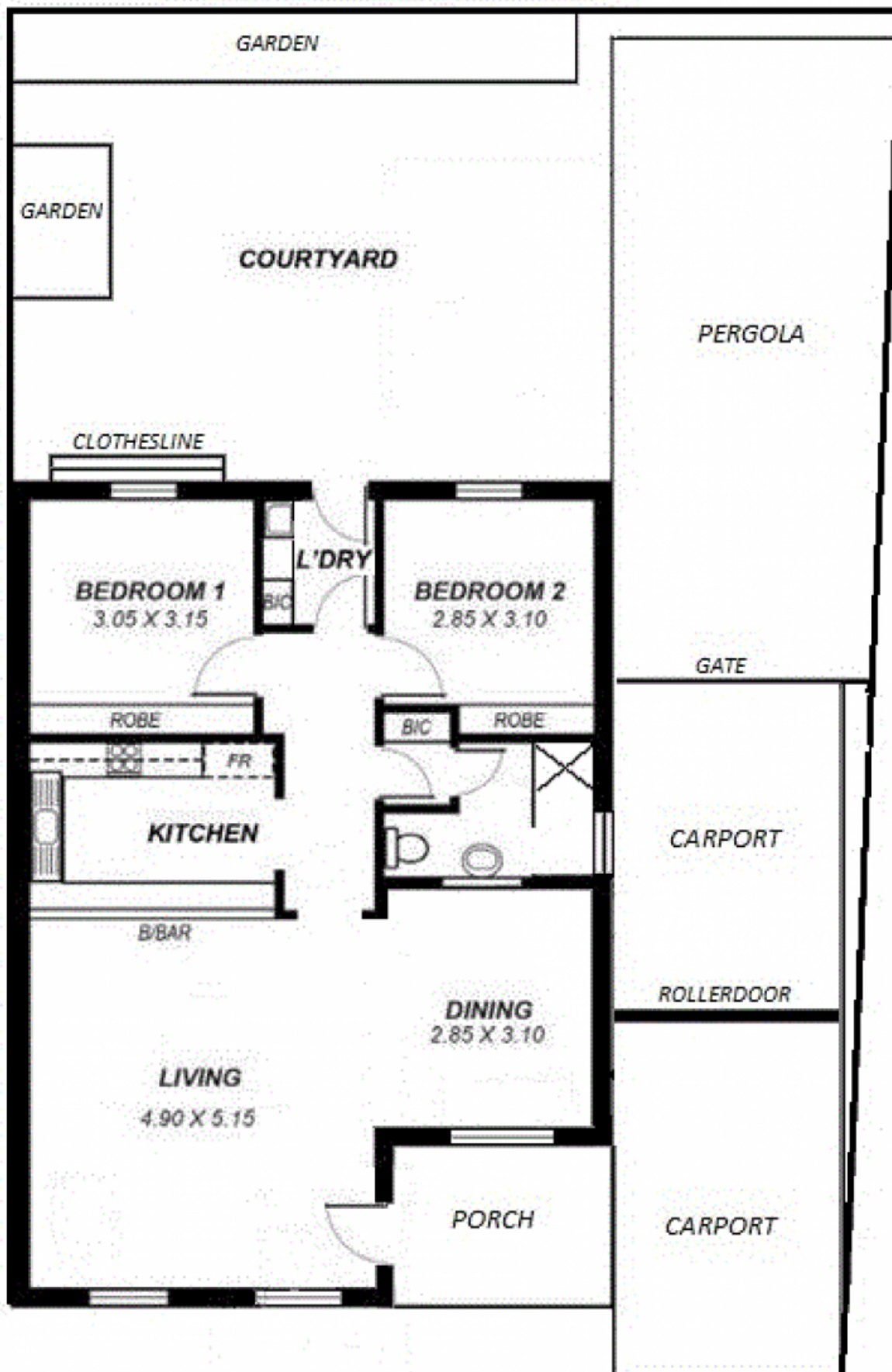
Type : Unit
Building Size : 10 sqm
Land Size : 200 sqm
View : <https://www.magain.com.au/property/unit-631-park-terrace-gilberton-sa/8435900>

[For full version visit the website](https://www.magain.com.au)

<https://www.magain.com.au>
Magain Real Estate

457 Greenhill Road Tusmore SA
08 8332 1022

6/31 PARK TCE, GILBERTON



*This drawing is for illustration purposes only.
All measurements are approximate and details intended
to be relied upon should be independently verified.*