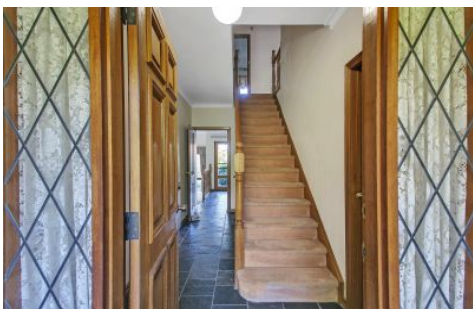





MAGAIN



1A Ayrbank Avenue STONYFELL SA

4  2  2 

Beautifully presented and in great condition this large family home is perfect for the growing family or couple looking at moving into the area.

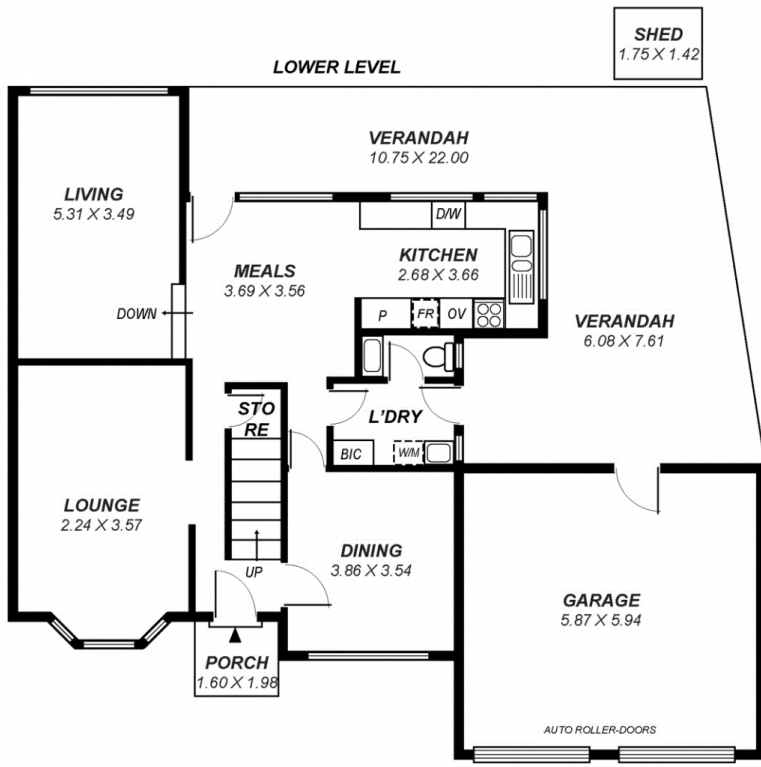
Situated on approximately 600sqm the home offers great spaces with up to three separate living areas on the ground floor and 4 bedrooms on the second floor.

There is a formal dining room and separate formal lounge at the front of the home with a large sunken living room with adjoin meals and kitchen area at the rear. The great size kitchen offers an abundance of space with quality timber cabinetry, dishwasher and wall mount oven.

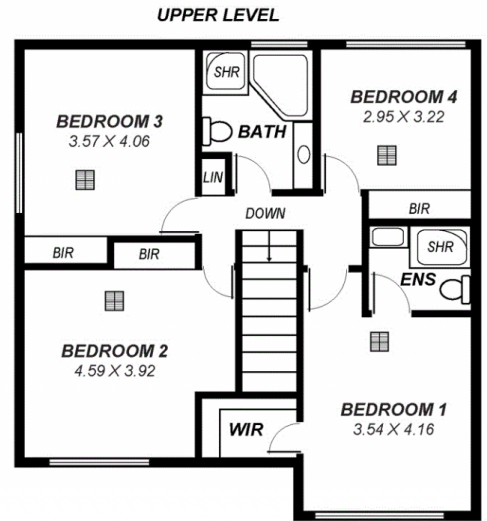
The equally as impressive upstairs features 4 bedrooms, all

[For full version visit the website](https://www.magain.com.au/property/1a-ayr-bank-avenue-stonyfell-sa/8435904)

Type : House
Land Size : 600 sqm
View : <https://www.magain.com.au/property/1a-ayr-bank-avenue-stonyfell-sa/8435904>



SHED
1.75 X 1.42



*This drawing is for illustration purposes only .
All measurements are approximate and details intended
to be relied upon should be independently verified.*

Area	m ²
Lowerlevel:	81.08
Upperlevel:	85.08
Verandah:	69.92
Garage:	34.87
Porch:	3.17
Shed:	2.49
Total:	277.06