

MAGAIN



23 Bilney Drive ATHELSTONE SA

4 2 2

Welcome to 23 Bilney Drive, Athelstone the epitome of Athelstone living just meters away from Linear Reserve.

Thoughtfully built by the current owners in 1998 and lovingly maintained and updated, this big family home is perfect for the growing family or entertainers.

Superbly positioned on a very generous allotment of 815sqm approx., the home takes advantage of its surroundings and elevated position with sweeping views across the hills face. Perfectly manicured and landscaped front gardens invite you in as you enter the home.

Located to the front of the home are your great sized formal living areas including a separate formal lounge and formal

Type : House
Land Size : 815 sqm
View : <https://www.magain.com.au/property/23-bilney-drive-athelstone-sa/8435906>

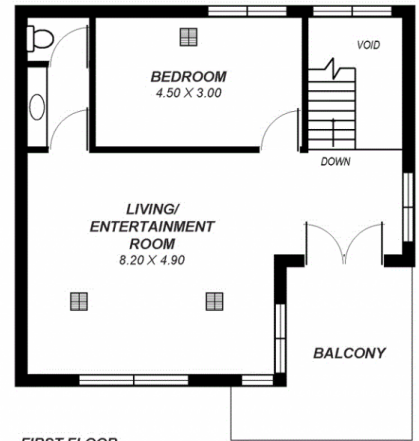
[For full version visit the website](https://www.magain.com.au)

<https://www.magain.com.au>
Magain Real Estate

457 Greenhill Road Tusmore SA
08 8332 1022



GROUND FLOOR



FIRST FLOOR

Area	m ²
Ground Living:	175
First Living:	53
Garage:	38
Outdoor Entertain:	58
Balcony:	10
Total:	334

*This drawing is for illustration purposes only.
All measurements are approximate and details intended
to be relied upon should be independently verified.*